

# IEI SmartOSD Software OSD for IEI LCD Monitors

IEI SmartOSD is a proprietary On-Screen-Display (OSD) software solution that enables easy remote monitor setting adjustments in Windows environment. IEI SmartOSD delivers excellent performance and provides more flexibility than typical OSD hardware solutions when adjusting a monitor. SmartOSD also allows monitor settings such as brightness, contrast, screen position, size, and color gain to be read and changed over normal video cable (VGA/DVI).



Local Control System

Directly controls IEI display device through standard video cables !

VESA DDC / CI Protocol



DVI~10m



VGA~30m



IEI Display Monitor Only!



## SmartOSD Features

- 100% compatible with Windows environment -Windows 95/NT 4.0/98/2000/2003/XP/Vista
- Normal video cable (VGA/DVI) connection only
- Overcome operation obstacles

Distance, location and multiple display units no longer present obstacles when controlling the monitors with the SmartOSD.



Multiple Control Displays



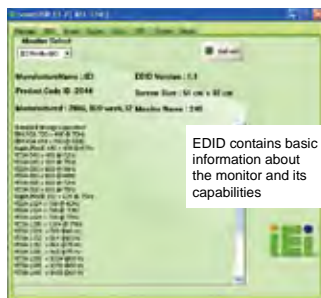
Untouchable Location

## 100% Compatible with VESA DDC / CI Protocol

IEI LCD monitors are implemented with the VESA DDC/CI protocol and standard VESA Monitor Control Command Set (MCCS). Compliance software for designing displays compatible with VESA's DDC/CI and MCCS standards are easily modified and applied in other application programs.

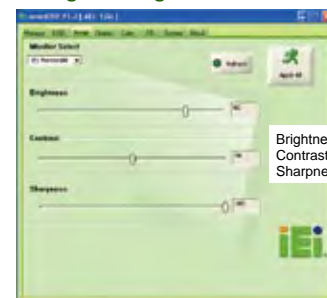
### Various Remote Management Functions

#### 1. EDID



EDID contains basic information about the monitor and its capabilities

#### 2. Image Setting



Brightness Contrast Sharpness

#### 3. Display Setting



Phase Clock

#### 4. Color Setting



User Red Gain  
User Green Gain  
User Blue Gain  
Color Temperature  
Gamma

#### 5. Picture in Picture Setting



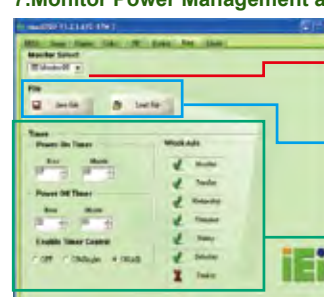
PIP On/Off  
PIP Input Source  
PIP Size

#### 6. System Setting



Monitor Power Control  
Auto Brightness  
Main Source Input Volume  
Misc (Factory Reset/OSD Lock/OSD Unlock)  
Mute

#### 7. Monitor Power Management and File Saving



- **Monitor Select**  
Selects the monitor unit for which the system parameters will be adjusted
- **Settings Saving**  
Saves the referred settings of all the OSD functions as .dat files and load the settings
- **Power Management**  
Sets the monitor power on/off by time and week

1 IEI Mobile Solutions

2 Automation Panel Solutions

3 PACSmate Medical Solutions

4 Optional Peripherals