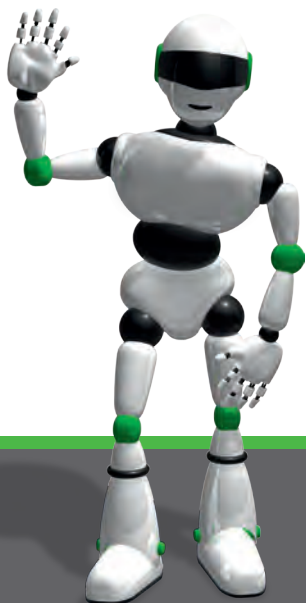




*...by people
who care!*



ICP Deutschland GmbH
All about us



...by people who care!

We provide over

19,200 minutes of advice
per month

HOW DID THAT HAPPEN?

From the very beginning our focus has always been on taking care of your needs and requirements. Your positive feedback was ultimately the reason we made this unique selling point our motto.

„...by people who care“ signifies that we consider ourselves dedicated to taking care of your needs, questions and challenges - you won't be left to face them alone. Your success drives us.

And we will meet you at a personal level. Our employees play the biggest part in the process since they're in direct contact with you, whether in the form of personal meeting, by phone or by e-mail.

At the same time, our commitment is specifically tailored to your needs. After all, no two customers are alike, least of all you. That's why our image brochure also focuses on you.

The following pages show customer-specific services relevant to your daily and project business as a systems integrator, end user or value added reseller. These services are the result of our years of experience with you.

Dive into the world of ICP Deutschland and convince yourself of our extensive services “...by people who care”.

For you as a systems integrator

We consistently stock over
14,000 items for you

ENSURE LONG-TERM CUSTOMER LOYALTY

You buy individual components from reliable suppliers and use them to develop customer-specific solutions for your project partners.



Engineering drawings and detailed compatibility information help you with project planning right from the start.

You receive specific information about project changes and EOL notices so that you can review how these affect your customers early on.



Quick and direct support gives you ad hoc answers to your questions and provides support with any deviations.

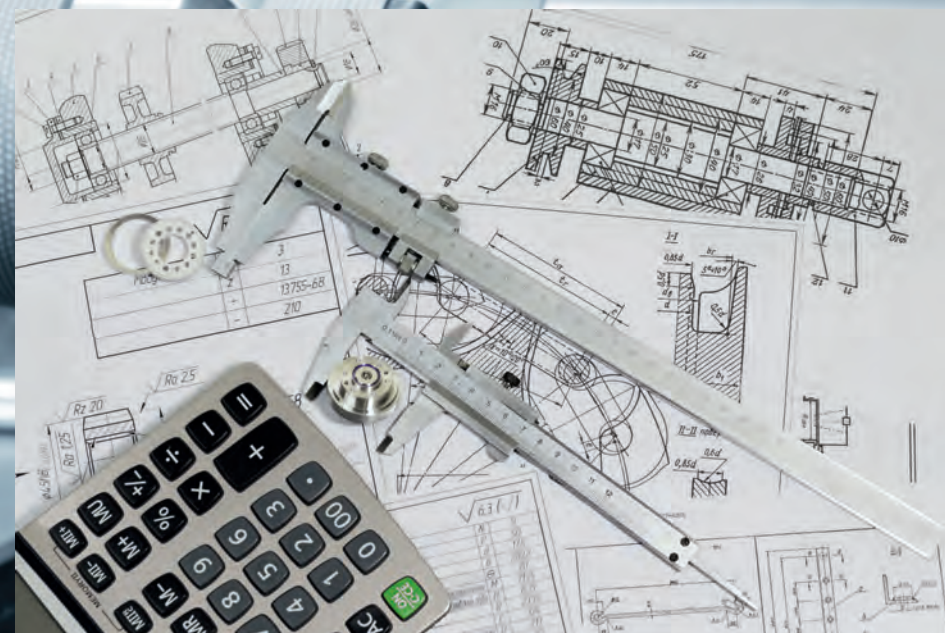
If service is needed, we can quickly process repairs for you.



Extensive quality control inspections and endurance tests allow you to develop reliable customer solutions.



Stocking the respective products in Germany ensures your rush orders are processed quickly.





For you as an
end user

We manufacture
2,500 custom systems for
you per year

HOW YOU BENEFIT

You purchase hardware solutions with an operational operating system and use these in your production hall to manufacture your own products.



We offer quick delivery and processing so you can put your products into service within a very short time.

Immediate advanced replacement so your production does not grind to a halt.



Our quality control inspections and endurance tests minimize potential malfunctions.



Your installation and configuration requirements can be clarified right away through our direct phone support.

Service and repairs provided in Germany ensure you don't have to go through the manufacturer.



You are notified of alternatives to your products in use early on.

Datasheets, manuals and recovery options ensure reliable use of our products.

For you as a value added reseller

We create
750 datasheets per
year for you

CONVINCE YOUR CUSTOMERS

You purchase individual components externally and enhance the overall product with your own hardware and software developments.



Upon request, we can create neutral datasheets for you.

With effective release and end-of-life notices you can always keep your product portfolio up to date.



A powerful high quality brand ensures a high satisfaction rate among your customers.

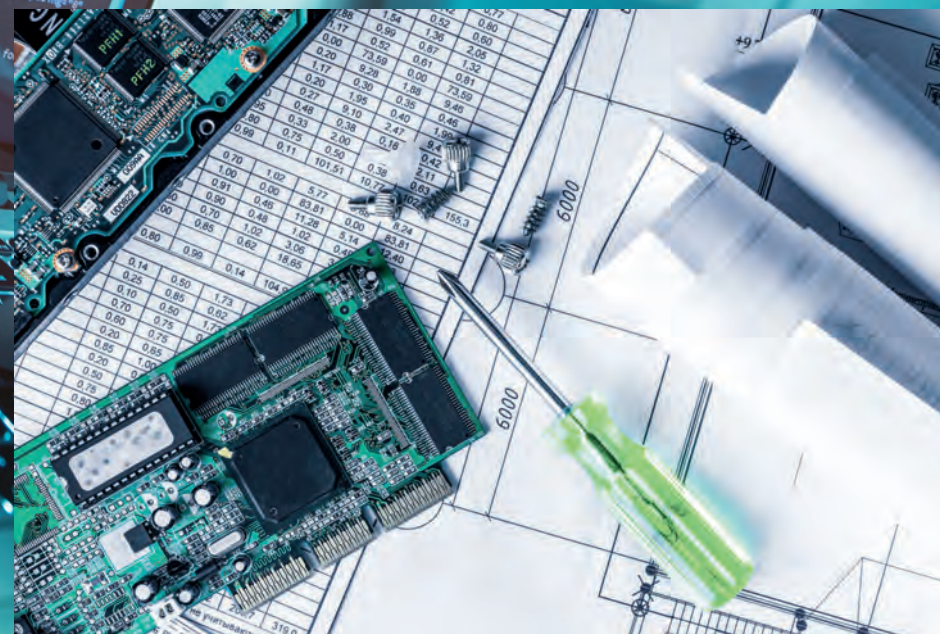


Your purchase orders can be processed quickly and without delay.

With immediate advanced replacement, you and your customers can operate fully independent of having to look for the cause.



Use applied testing processes as the unique selling proposition of your added value.



Your applications



Choose from over

150^{product groups}

YOU CAN COUNT ON US FOR THESE APPLICATIONS

Our know-how, approach and solutions are the result of years of experience in an industrial environment. At the same time, the variety of applications makes our niche business so multifaceted. Utilize this for your key and project-related business or to develop new growth markets.

- **Automation technology**
Custom automate your processes with compact and flexible embedded systems.
- **Industrial Communication**
Implement data integrity and network communication smart, easily and without limitations.
- **Image processing**
Benefit from high resolutions and powerful performance.
- **Machine building**
A wide variety of interfaces guarantees individual margins for any application.
- **Internet of Things / Industry 4.0**
We're your one stop shop for everything from sensor computer interfaces to net-working and private cloud.
- **Healthcare**
Benefit from the highest level of operating convenience and versatile applications in a medical environment.
- **Terminal / Point of Sale**
Visualize and interact effectively with multi-display output.
- **Fleet management / Logistics**
Our robust and handy solutions will turn your mobile data transmission into routine.
- **Building automation**
Optimize your building automation in an environmentally-friendly and convenient manner.



Your advantages

Our news will keep you posted
450,000 characters in 15 years

OUR CONSULTING SERVICES

We will provide comprehensive consultations and are familiar with your various needs throughout the consultation. Our introductions allow you to familiarize yourself with our products in advance. Our pre-sales support team will assist you after the initial contact. Our after-sales support team will keep you informed after the purchase.

- | Introductions | Pre-sales support | After-sales support |
|--|---|---|
| <ul style="list-style-type: none">• Website with product filters.• Datasheets, manuals, accessories and packing lists for specific product details.• Instant online chat with our technical sales team.• Online shop with numerous functions: Watch list, inquiries/quotations, prices.• Catalogs and brochures as a reference.• Product highlights in the newsletter and detailed application information in our “TechTalk” series.• Visit our booth at “sps ipc drives” and “Embedded World” in Nuremberg. | <ul style="list-style-type: none">• Personal consultations with our technical sales team, among other things to clarify individual BIOS, hardware changes or for a plausibility check of selected products and requirements.• Extensive compatibility information regarding performance and component selection.• Quick response time to inquiries.• Applied testing can considerably reduce your development time.• Flexible order options: online from our online shop, by phone, e-mail or via fax.• Information on the exact order status. | <ul style="list-style-type: none">• Detailed sales documents.• Product lifecycle management: End-of-life notices (EOL), product changes notices (PCN), technical change notices (TN).• Extensive support: phone support, personal contact person and direct exchange with our developers.• Blanket orders: Stocked in Germany, time to market requests and variable term.• Quick and direct phone support for subsequent changes.• Status or progress information for the problem-solving process. |

Our industrial computers

Our online shop has

2,230 products waiting for you

FEATURES AWAITING YOU

We're your one stop. From industrial computer products to network technology as well as measurement and automation technology. All of our products share long-term availability and a robust, and industrial design. At the same time, we focus on complying with the latest level of development and stick with established standards.

Industrial computer products

Our product portfolio mainly features touch panel PCs and CPU boards as well as embedded systems from "iEi". These are complemented with additional components required for an operational industrial computer. This includes processors, memory, hard drives, SSDs, displays and add-in cards. We guarantee reliable operation with continuous duty in extreme environmental conditions. Extended temperature range and resistance to moisture, dust, shock and vibration give you the largest range of applications. Long-term availability allows you to plan your projects far in advance.

Network technology

We can't imagine today's industrial environment without Ethernet network technology. We offer Ethernet switches, WLAN routers and access points as well as media converters and device servers for networking sensors, actuators and control systems. An extended temperature range, redundant voltage input and multiple installation options mean the industrial network components by "ORing" are virtually made for your application. Choose from a wide range of switches: Fast or Gigabit Ethernet, with RJ45 or fiber-optic connection, unmanaged or managed with O-Ring function and with PoE ports.

Automation technology

We offer measurement and automation technology components by "ICPDAS", which are designed for PC-based industrial data logging and control. PCI and PCIe cards, Ethernet input/output modules, interface converters and independent automation controllers provide the support you need. Utilize established protocols like CANopen, DeviceNet or Profibus, etc. We are more than happy to facilitate connecting these to common software packages and integration into your own software solutions using pre-installed drivers and sample programs.

About us

We have been here for you for over

20^{years now}

THIS COULD ALSO INTEREST YOU

ICP Deutschland GmbH, based in Reutlingen near the Stuttgart Airport (Germany), has been successfully operating in the industrial PC market under the “iEi” brand (formerly ”ICP”) since 1995. In the heart of Europe, we bridge the gap between development and production in Taiwan and you - right near you.

Specialized

We are your specialist for “iEi” brand products in Europe. We offer pertinent German know-how and reliability based on our years of experience in the industrial environment. We are your competent partner who guarantees quick and custom solutions for implementing projects. Our employees are always receiving additional training to ensure you can not only benefit from our knowledge today but also in the future.

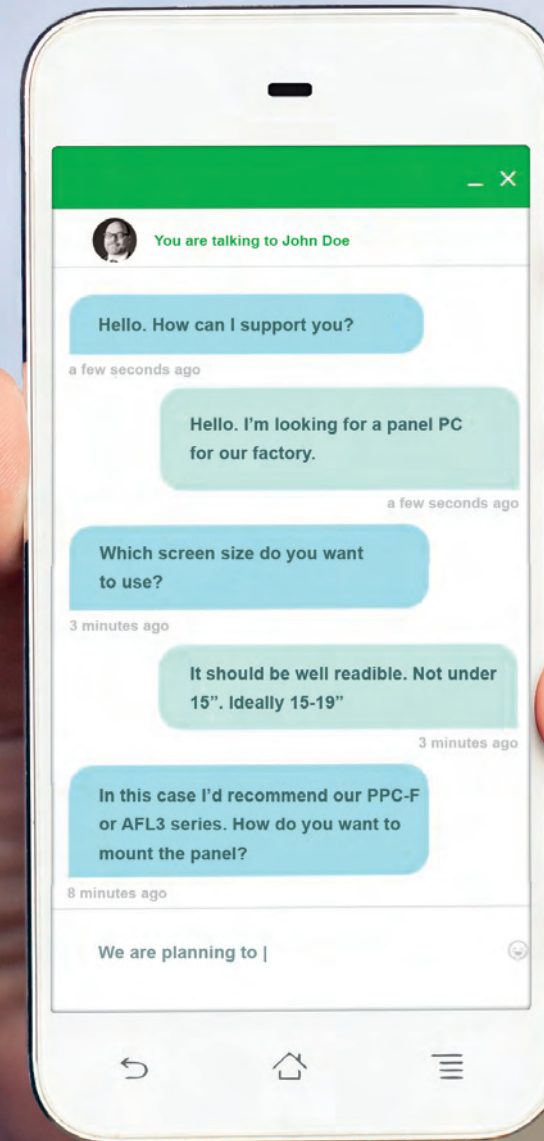
Innovative

Our experienced employees continuously review customer and market requirements. We further routinely scour the market for new and future technologies. These findings along with your feedback are incorporated into new product developments. We have made it our objective to combine the latest technology with established standards to create the greatest possible benefit for you.

Reliable

Our work is constantly subject to changes in the market and increasingly complex customer requirements. We meet these changing market conditions with the respective product changes and new developments. We as a company are also changing in the age of digitalization. Thanks to this ability our customer base has been steadily growing for years and we have been able to achieve a very high degree of customer loyalty.

Get in touch with us!



Each month we receive over

1,000 e-mail inquiries from you

AND NOW?

We have provided you with some deep insight into the world of ICP Deutschland "... by people who care". Now it's your turn...

Just right?

You're a systems integrator, end user or value added reseller convinced by our services and see an immediate need for action?

Suitable application?

You don't fit into any of the customer groups? But you use one of the applications mentioned and are in need of industrial computer products, network technology or automation technology?

Convinced?

You are generally interested in our services but don't have a precise need yet?

THEN GET IN TOUCH WITH US

+49 (0) 7121 14323-20

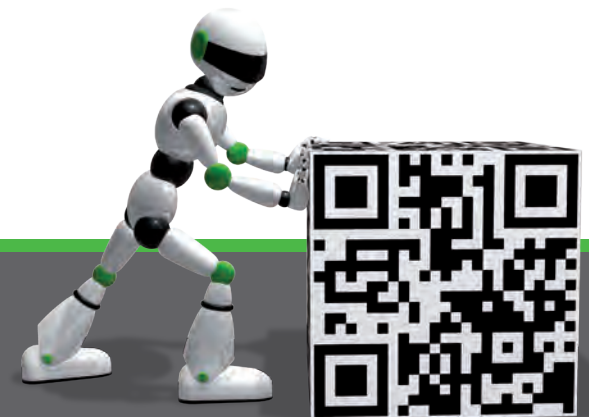
 www.icp-deutschland.de

 sales@icp-deutschland.de

We would be more than happy to provide a detailed consultation.

Your ICP Germany Team

*...by people
who care!*



ICP Deutschland GmbH

Mahdenstr. 3 | D-72768 Reutlingen | Tel: +49 (0) 7121 14323-0 | info@icp-deutschland.de | www.icp-deutschland.de

Legal notice: All rights reserved. All product and company names mentioned are trademarks or trade names of the respective companies. Misprints, errors and changes excepted. February 2017