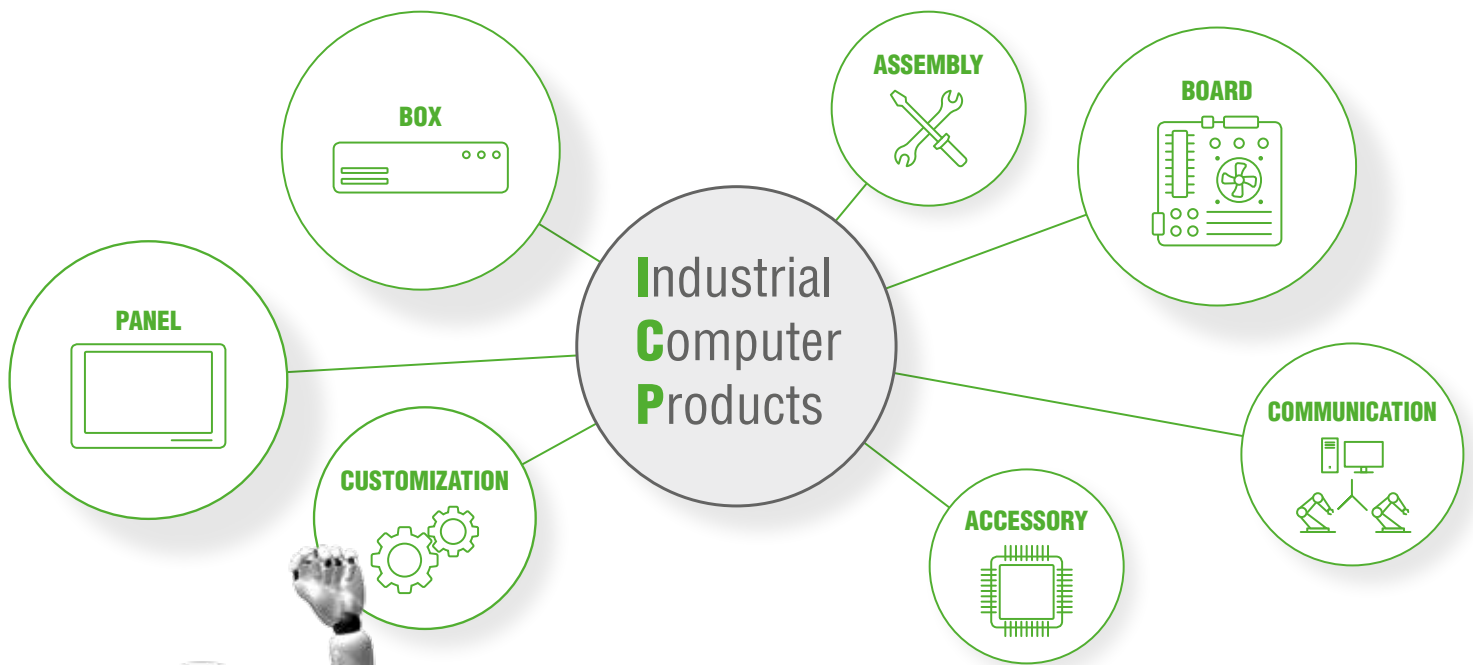


Version **2.0**

icp iei[®]

INDUSTRIAL COMPUTER PRODUCTS

*...by people
who care!*



Shortform Catalog 2018/19

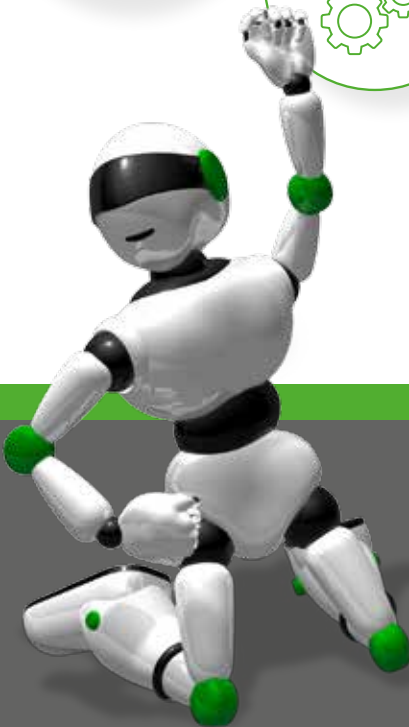


Table of Contents

1. Display System



| | |
|--|----------|
| Light Industrial Panel Solution | 1 |
| AFOLUX GEN 3 (7" ~ 22") | 2 |

| | |
|---|----------|
| Heavy Industrial Panel PC Solution | 7 |
| PPC-F (5.7" ~ 24") | 8 |
| ARM-PPC-F / DM-F (15" ~ 24") | 11 |
| FLEX (15" ~ 24") | 12 |

| | |
|-------------------------------------|-----------|
| RISC Based Panel PC Solution | 13 |
| IOVU / IOBA (4.3 ~ 17") | 13 |

| | |
|------------------------------------|-----------|
| Industrial Monitor Solution | 18 |
| DM-F (6.5 ~ 24") | 19 |

2. Single Board Computer



| | |
|-----------------------|-----------|
| CPU Cards | 21 |
| PICMG 1.3 | 22 |
| PICMG 1.0 | 24 |
| Half-size PCISA / ISA | 25 |
| Backplanes | 26 |

| | |
|-------------------------------|-----------|
| Industrial Motherboard | 28 |
| ATX IMBA | 28 |
| Micro ATX IMB | 30 |
| Mini-ITX KINO | 31 |

| | |
|------------------------|-----------|
| Embedded Boards | 35 |
| EPIC NANO | 35 |
| 3.5" WAFER | 37 |
| Pico-ITX HYPER | 39 |
| PC/104 | 42 |

| | |
|----------------------------|-----------|
| Computer on Modules | 41 |
| COM Express ICE | 41 |

3. Industrial System



| | |
|--|-----------|
| Industrial System Platform Solution | 43 |
| Industrial Automation Systems | 44 |
| DIN-Rail Systems | 47 |
| Compact Size Embedded System | 48 |

4. Industrial Computer Chassis



| | |
|------------------------------------|-----------|
| Industrial Computer Chassis | 49 |
| SBC Embedded Systems | 50 |
| Embedded Chassis Series | 51 |

5. Industrial Storage & Memory



| | |
|---------------------------------------|-----------|
| SSD / CF / CFast / mSATA / RAM | 53 |
| Selection Guide | 53 |

Light Industrial Panel Solution

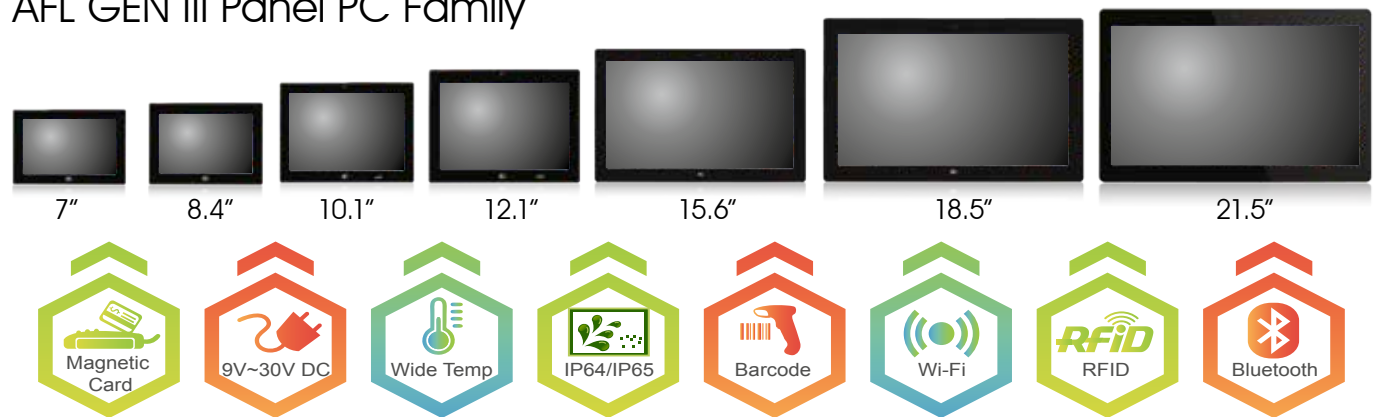
Today, more and more customers are looking for advanced services such as round-the-clock service or just-in-time delivery. Service automation enables the exchange of information and communication between administrators and clients through the thin, low power consumption portable devices that fit with many circumstances. Upgrade your service platform with IEI service automation solutions, which have advanced communication functions and solid mechanical characteristics. These solutions help you keep up with your customers while staying a step ahead of the competition.

AFOLUX GEN III Interactive Panel PC

Leading the Evolution of Intelligent HMI

AFOLUX GEN III Panel PC, a specialized all-in-one panel computer with 7-inch to 15.6-inch PCAP touchscreen, opens a new era of automation. It looks stylish like a tablet, and supports 802.11ac and Bluetooth 4.0 high speed connectivity. Its robustness meets industrial standards and its scalability make it easy to expand I/O options. The AFOLUX GEN III is designed for a wide range of applications which can be applied in different scenarios.

AFL GEN III Panel PC Family



Robustness

- IP65/IP64 front, IPx1 rear cover
- -10°C~50°C extended operating temperature
- 6H PCAP multi-touch

Stylish

- ABS plus PC plastic light weight housing
- 2mm bezel seamless design
- Upright portrait installation possible for all touch devices
- Less screw design

Scalability

- 1D/2D barcode module for retail applications
- 13.56MHz Mifare reader: meets ISO 14443A/B,15693
- MSR card reader for identifications
- E-Window for function expansion

Connectivity

- Digital microphone, 2-megapixel camera, speakers
- Wireless 802.11ac connectivity
- Bluetooth 4.0 (optional)

AFL3-W07A-BT

Intel® Celeron® N2807 (Dual Core, 1.58 GHz)

AFL3-08A-BT

Intel® Celeron® J1900 (Quad Core, 2.0 GHz)



Features

- W7"~8.4" light industrial interactive panel PC
- 9 V ~ 30 V wide range DC input with lockable DC jack
- Selectable AT/ATX power mode
- Built-in speakers
- One mSATA slot
- IP64/IP65 compliant front panel
- IEI One Key Recovery solution allows you to create rapid OS backup and recovery (suggested with over 4GB storage capacity)



Specifications

| Model | | AFL3-W07A-BT | AFL3-08A-BT |
|-----------------------|--|---|---|
| LCD | Size | 7" | 8.4" |
| | Resolution | 1024 x 600 (16:9) | 800 x 600 (4:3) |
| | Brightness (cd/m ²) | 500 | 450 |
| | Contrast Ratio | 700:1 | 600:1 |
| | LCD Color | 16.2M | 16.2M |
| | Pixel Pitch (mm) | 0.0635 (H) x 0.1905 (V) | 0.213 (H) x 0.213 (V) |
| | Viewing Angle (H-V) | 150° / 145° | 160° / 140° |
| | Backlight MTBF(hrs) | 20000 hrs | 50000 hrs |
| Touch | Touch Screen | Projected capacitive type | Resistive Touch Window/Projected capacitive type |
| | Touch Controller | EETI EXC3160 | PenMount DMC 9000/EETI EXC3146 |
| Motherboard | CPU | Intel® Celeron® N2807 (dual core, 1.58 GHz) | Intel® Celeron® J1900 (quad core, 2.0 GHz) |
| | RAM | 2GB DDR3L onboard RAM/ 4GB DDR3L onboard RAM | One 204-pin 2 GB 1333MHz single-channel, 2GB DDR3L SDRAM pre-installed (system max. 8GB) |
| | Ethernet | 2 x PCIe GbE by RTL8111E controller | 2 x PCIe GbE by RTL8111E controller |
| | Audio Codec | ALC892 | ALC892 |
| Storage | mSATA | | |
| I/O Ports & Switch | 2 x RS-232 COM port (DB-9 connector) 2 x USB 3.0 2 x GbE LAN 1 x Power switch 1 x Reset button 1 x AT/ATX switch 1 x 9-30V Lockable power jack | | 1 x RS-232 COM port (RJ-45 connector) 1 x RS-232/422/485 COM port (DB-9 connector) (RI/5V/12V) 2 x USB 3.0 2 x RJ-45 for GbE LAN 1 x Power switch 1 x Audio port (line-out) 1 x Reset button 1 x AT/ATX switch 1 x 9-30V DC Lockable power jack |
| | Audio | AMP 2W (internal speaker, left channel output) | AMP 2W + 2W (internal speaker) |
| Camera and Microphone | N/A | | 2-megapixel with low light function, digital microphone |
| Wireless & Bluetooth | IEEE 802.11 a/b/g/n/ac, Bluetooth V4.0 (PCIe mini slot) | | IEEE 802.11 a/b/g/n/ac (PCIe mini slot) |
| OSD Function | | Software OSD | |
| Physical | Front Panel Construction | PC + ABS Plastic | |
| | Mounting | Panel, Wall, Stand, Arm, Rack VESA 75mm x 75mm | |
| | Color | Black C | |
| | Dimensions (WxHxD) (mm) | 191 x 127 x 43 | 233 x 175 x 50 |
| | Cut-out Dimensions (WxH) (mm) | 182 x 111 | 207 x 143 |
| | Net/Gross Weight (kgs) | 0.73/1.81 | 0.8/2.44 |
| Environment | Operating Temperature (°C) (Ambient with air flow) | -20°C~50°C | -15°C~55°C |
| | Storage Temperature (°C) | -20°C~60°C | -20°C~65°C |
| | Humidity | 10% to 95% (non-condensing) | |
| | IP Level | IP 65 compliant front panel | IP 64 compliant front panel |
| Power | Safety&EMC | CE / FCC | |
| | Thermal Solution | Fanless | |
| | Power Requirement | 9 V ~ 30 V | |
| | Power Consumption | 12V@2.08 (Intel® N2807 CPU with 2GB 1333 MHz DDR3L memory) | 12V@2A (Intel® J1900 CPU with 2GB 1333 MHz DDR3L memory) |

AFL3-W10A-BT

Intel® Celeron® J1900 (Quad Core, 2.0 GHz)

AFL3-12A-BT

Intel® Celeron® J1900 (Quad Core, 2.0 GHz)

AFL3-12C-ULT3

Intel® Core™ i5 and Celeron® ULT Processor



Features

- W10"~12.1" light industrial interactive panel PC
- Wide range DC input with lockable DC jack
- Selectable AT/ATX power mode
- Built-in speakers
- One mSATA slot
- IP64 compliant front panel
- IEI One Key Recovery solution allows you to create rapid OS backup and recovery (suggested with over 4GB storage capacity)



Specifications

| Model | | AFL3-W10A-BT | AFL3-12A-BT | AFL3-12C-ULT3 |
|-----------------------|--|---|---|---|
| LCD | Size | 10.1" | 12.1" | 12.1" |
| | Resolution | 1280 x 800 (16:10) | 1024 x 768 (4:3) | 1024 x 768 (4:3) |
| | Brightness (cd/m ²) | 350 | 500 | 500 |
| | Contrast Ratio | 800:1 | 700:1 | 700:1 |
| | LCD Color | 16.2M | 16.2M | 16.2M |
| | Pixel Pitch (mm) | 0.1695 (H) x 0.1695 (V) | 0.240 (H) x 0.240 (V) | 0.240 (H) x 0.240 (V) |
| | Viewing Angle (H-V) | 170° / 170° | 160° / 160° | 160° / 160° |
| | Backlight MTBF(hrs) | 15000 hrs | 50000 hrs | 50000 hrs |
| Touch | Touch Screen | Projected capacitive type | 5-wire resistive touch window/ projected capacitive type | Projected capacitive type with USB interface (anti-UV) |
| | Touch Controller | EETI EXC3146 | PenMount DMC9000/ EETI EXC3146 | EETI EXC3180 |
| Motherboard | CPU | Intel® Celeron® J1900 (quad core, 2.0 GHz) | Intel® Celeron® J1900 (quad core, 2.0 GHz) | 6th Generation Intel® Core™ i5 and Celeron® on-board processor |
| | RAM | One 204-pin 2 GB 1333MHz single-channel, 2GB DDR3L SDRAM pre-installed (system max. 8GB) | One 204-pin 2 GB 1333MHz single-channel, 2GB DDR3L SDRAM pre-installed (system max. 8GB) | One 260-pin 2133MHz single-channel, 4GB DDR4L SDRAM pre-installed (system max. 8GB) |
| | Ethernet | 2 x PCIe GbE by RTL8111E controller | 2 x PCIe GbE by RTL8111E controller | 2 x PCIe GbE by Intel® i211 controller |
| | Audio Codec | ALC892 | ALC892 | ALC892 |
| Storage | mSATA | mSATA 2.5" SATA 3Gb/s HDD bay | 2.5" SATA 3Gb/s HDD bay M.2 M key PCIe (2230) mSATA slot (PCIe/mSATA/USB) | |
| I/O Ports & Switch | 1 x RS-232 COM port (RJ-45 connector) 1 x RS-232/422/485 COM port (DB-9 connector) (R1/5V/12V) 2 x USB 3.0 2 x USB 2.0 2 x RJ-45 for GbE LAN 1 x Power switch 1 x Audio port (line-out) 1 x Reset button 1 x AT/ATX switch 1 x 9-30V DC lockable power jack | 1 x RS-232 COM port (RJ-45 connector) 1 x RS-232/422/485 COM port (DB-9 connector) (R1/5V/12V) 2 x USB 3.0 2 x USB 2.0 2 x RJ-45 for GbE LAN 1 x Power switch 1 x Audio port (line-out) 1 x Reset button 1 x AT/ATX switch 1 x 9-30V lockable power jack | 1 x RS-232/422/485 (DB-9) 1 x RS232 (RJ-45) 2 x GbE LAN 2 x USB 2.0 2 x USB 3.0 1 x DC jack (12-30V DC) 1 x HDMI 1 x Power switch 1 x Reset button 1 x AT/ATX switch | |
| E-Window Expansion | N/A | Yes, optional | Yes, optional | |
| Audio | AMP 2W + 2W (internal speaker) | AMP 3W + 3W (internal speaker) | AMP 3W + 3W (internal speaker) | |
| Camera and Microphone | 2-megapixel with low light function, digital microphone | | | |
| Wireless | IEEE 802.11a/b/g/n/ac (PCIe Mini slot) | | IEEE 802.11 a/b/g/n/ac, Bluetooth V4.0, M.2 slot | |
| OSD Function | Software OSD | | | |
| Physical | Front Panel Construction | PC + ABS Plastic | | |
| | Mounting | Panel, Wall, Stand, Arm VESA 75mm x 75mm | Panel, Wall, Rack, Stand and Arm VESA 75mm x 75mm / 100mm x 100mm | Panel, Wall, Stand and Arm VESA 75mm x 75mm / VESA 100mm x 100mm |
| | Color | Black C | | |
| | Dimensions (WxHxD) (mm) | 262 x 181 x 42 | 304 x 243 x 44 | 304 x 243 x 58 |
| | Cut-out Dimensions (WxH) (mm) | 236 x 149 | 243 x 205 | 272 x 223 |
| | Net/Gross Weight (kgs) | 1.06/2.58 | 1.92/3.95 | 3/5.03 |
| Environment | Operating Temperature (Ambient with air flow) | -10°C~50°C | -20°C~50°C | -20°C ~ 50°C |
| | Storage Temperature | -20°C~60°C | -20°C~60°C | -30°C ~ 60°C |
| | Humidity | 10% to 95% (non-condensing) | | |
| | IP Level | IP 64 compliant front panel | | |
| | Safety&EMC | CE / FCC | | CE , FCC , ErP 2009/125/EC |
| Power | Thermal Solution | Fanless | | |
| | Power Requirement | 9 V ~ 30 V DC | | 12 V ~ 30 V DC |
| | Power Consumption | 12V@2.3A (Intel® J1900 CPU with 2GB 1333 MHz DDR3L memory) | 12V@3.58A (Intel® J1900 CPU with 2GB 1333 MHz DDR3L memory) | 12V@6A (Intel® Core™ i5-6300U CPU with 4GB DDR4 2133 MHz DDR4 memory) |

AFL3-W15A-BT

Intel® Celeron® J1900 (Quad Core, 2.0 GHz)

AFL3-W15B-H81

Intel® Core™ i7/i5/i3, Pentium® and Celeron®

AFL3-W15C-ULT3

Intel® Core™ i5 and Celeron® ULT Processor



Features

- W15" light industrial interactive panel PC
- 9 V ~ 30 V wide range DC power input
- Selectable AT/ATX power mode
- Built-in speakers
- One mSATA slot
- IP64 compliant front panel
- IEI One Key Recovery solution allows you to create rapid OS backup and recovery (suggested with over 4GB storage capacity)



Specifications

| Model | AFL3-W15A-BT | AFL3-W15B-H81 | AFL3-W15C-ULT3 | |
|-----------------------|---|---|---|--|
| LCD | Size | 15.6" | | |
| | Resolution | 1366 x 768 (16:9) | | |
| | Brightness (cd/m ²) | 400 | | |
| | Contrast Ratio | 500:1 | | |
| | LCD Color | 16.2M | | |
| | Pixel Pitch (mm) | 0.240 (H) x 0.240 (V) | | |
| | Viewing Angle (H-V) | 170° / 160° | | |
| | Backlight MTBF(hrs) | 50000 (LED backlight) | | |
| Touch | Touch Screen | 5-wire resistive type with RS-232 interface / projected capacitive type with USB interface | | |
| | Touch Controller | PenMount DMC9000 / EETI EXC3188 | PenMount DMC9000 / EETI EXC7200 | PenMount DMC9000 / EETI EXC3188 |
| Motherboard | CPU | Intel® Celeron® J1900 (quad core, 2 GHz) | Intel® Core™ i7/i5/i3, Pentium®, Celeron® processor (TDP 35W) | 6th Generation Intel® Core™ i5 and Celeron® on-board processor |
| | Chipset | | Intel® H81 | |
| | RAM | One 204-pin 1333 MHz single-channel DDR3L SDRAM, 2GB pre-installed (system max. 8GB) | Two 204-pin 1333 MHz single-channel DDR3L SDRAM, 4GB pre-installed (system max. 16GB) | Two 260-pin 2133/1867 MHz dual-channel DDR4 SO-DIMMs (system max. 32 GB) |
| | Ethernet | 2 x PCIe GbE by RTL8111E controller | | 2 x Intel® I211 PCIe GbE controller |
| | Audio Codec | ALC892 | | |
| Storage | (1) 1 x mSATA (2) 1 x 2.5" SATA 3Gb/s HDD bay | | (1) 1 x 2.5" SATA 3Gb/s HDD bay (2) 1 x M.2 M key PCIe storage (2280 or 22110) (3) 1 x mSATA slot | |
| I/O Ports & Switch | 1 x RS-232 COM port (RJ-45 connector) 1 x RS-232/422/485 COM port (DB-9 connector) (RI/5V/12V) 2 x USB 2.0 2 x USB 3.0 2 x GbE LAN 1 x Power switch 1 x Reset button 1 x AT/ATX switch 1 x Audio port (line-out) 1 x 9-30V lockable power jack | 1 x RS-232 COM port (DB-9 connector) 1 x RS-232/422/485 COM port (DB-9 connector) (RI/5V/12V) 2 x GbE LAN 4 x USB 2.0 2 x USB 3.0 1 x HDMI output 1 x Power switch 1 x Reset button 1 x AT/ATX switch 1 x Audio port (line-out) 1 x 9-30V lockable power jack | 1 x RS-232 by DB-9 (RI/5V/12V) 1 x RS-232/422/485 by DB-9 (RI/5V/12V) 2 x GbE LAN 4 x USB 3.0 1 x HDMI output 1 x Power switch 1 x Reset button 1 x AT/ATX switch 1 x 9-30V lockable power jack | |
| E-Window Expansion | Yes, optional | N/A | Yes, optional | |
| Audio | AMP 3W + 3W (internal speakers) | | | |
| Camera and Microphone | 2-megapixel with low light function, digital microphone | | | |
| Wireless & Bluetooth | IEEE 802.11a/b/g/n/ac (PCIe Mini slot) | IEEE 802.11a/b/g/n/ac, Bluetooth v4.0 (PCIe Mini slot) | IEEE 802.11a/b/g/n/ac, Bluetooth v4.0 (M.2 slot) | |
| OSD Function | Software OSD | | | |
| | PC + ABS Plastic | | | |
| | Panel, Wall, Rack, Stand and Arm VESA 75mm x 75mm / 100mm x 100mm | | | |
| Physical | Color | Black C | | |
| | Dimensions (WxHxD) (mm) | 396 x 250 x 53 | 396 x 250 x 59 | 396 x 250 x 64 |
| | Cut-out Dimensions (WxH) (mm) | 273 x 226 | 369 x 226 | 369 x 226 |
| | Net/Gross Weight (kgs) | 3.3/5.6 | 3.74/5.74 | 4.5/6.5 |
| | Operating Temperature (°C) (Ambient with air flow) | -20°C~50°C | 0°C~50°C | -20°C~50°C |
| Environment | Storage Temperature (°C) | -20°C~60°C | | |
| | Humidity | 10% to 95% (non-condensing) | | |
| | IP Level | IP 64 compliant front panel | | |
| | Safety & EMC | CE / FCC | | |
| | Thermal Solution | Fanless | Smart Fan | Fanless |
| Power | Power Requirement | 9 V ~ 30 V | | |
| | Power Consumption | 12V@4.16A (Intel® J1900 CPU with 2GB 1333 MHz DDR3 memory) | 12V@6.33A (Intel® Pentium® G3320TE CPU with 4GB 1333 MHz DDR3L memory) | 12V@.6A (Intel® Core™ i5-6300U CPU with 4GB DDR4 2133 MHz DDR4 memory) |

AFL3-W19C-ULT3

Intel® Core™ i5 and Celeron® ULT Processor

AFL3-W19A-AL

Intel® Celeron® / Atom™ Apollo Lake Processor

Preliminary



Features

- 18.5" light industrial interactive panel PC
- Wide range DC power input
- Selectable AT/ATX power mode
- Built-in speakers
- One mSATA slot
- IP64 compliant front panel
- IEI One Key Recovery solution allows you to create rapid OS backup and recovery (suggested with over 4GB storage capacity)

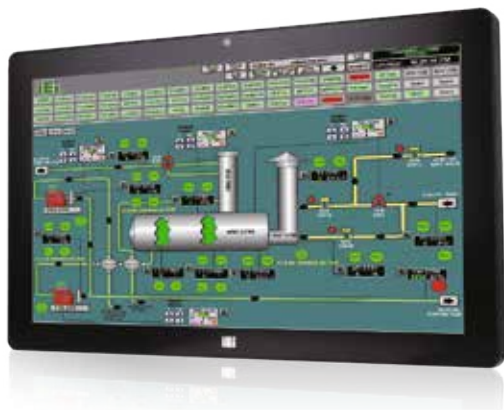


Specifications

| Model | | AFL3-W19C-ULT3 | AFL3-W19A-AL Preliminary |
|-----------------------|--|--|--|
| LCD | Size | 18.5" | 18.5" |
| | Resolution | 1366 x 768 (16:9) | 1366 x 768 (16:9) |
| | Brightness (cd/m ²) | 250 | 250/350 |
| | Contrast Ratio | 1000:1 | 1000:1 |
| | LCD Color | 262K | 262K |
| | Pixel Pitch (mm) | 0.240 (H) x 0.240 (V) | 0.240 (H) x 0.240 (V) |
| | Viewing Angle (H-V) | 170°/160° | 170°/160° |
| | Backlight MTBF(hrs) | 30,000 (LED backlight panel) | 30,000 (LED backlight panel) |
| Touch | Touch Screen | Projected capacitive type with USB interface | Projected capacitive type with USB interface (anti-UV) |
| | Touch Controller | EETI EXC3180 | EETI EXC3188 |
| Motherboard | CPU | Intel® Core™ i5 and Celeron® ULT Processor | Intel® Atom™ Processor E3940 (2M Cache, 1.6 GHZ up to 1.80 GHZ) ,TDP 9.5W Intel® Celeron® Processor N3350 (2M Cache, 1.1 GHZ up to 2.40 GHZ) , TDP 6W |
| | RAM | Two 260-pin 2133/1867 MHz dual-channel DDR4 SO-DIMMs (system max. 32 GB) | One 204-pin 1600/1333 MHz single-channel DDR3L SDRAM, 4GB pre-installed (system max. 8GB) |
| | Ethernet | 2 x Intel® I211-AT PCIe GbE controller | 2 x PCIe GbE by Intel® i211 controller |
| | Audio Codec | ALC892 | |
| Storage | (1) 1 x 2.5" SATA 3Gb/s HDD bay (2) 1 x M.2 M key PCIe storage (2280 or 22110) (3) 1 x mSATA slot | (1) 1 x 2.5" SATA 3Gb/s HDD bay (2) 1 x mSATA slot | |
| I/O Ports & Switch | 1 x RS-232 by DB-9 (RI/5V/12V) 1 x RS-232/422/485 by DB-9 (RI/5V/12V) 2 x GbE LAN 4 x USB 3.0 1 x HDMI output 1 x Power switch 1 x Reset button 1 x AT/ATX switch 1 x 9V ~ 30V lockable power jack | 1 x RS-232/422/485 by RJ-45 1 x RS-232 by RJ-45 2 x GbE LAN 2 x USB 3.0 2 x USB 2.0 1 x HDMI output 1 x 12V ~ 34V DC Jack 1 x Power switch 1 x AT/ATX switch 1 x Line out | |
| Audio | AMP 3W + 3W (internal speaker) | | |
| Camera and Microphone | 2-megapixel with low light function, digital microphone | 2-megapixel with low light function, digital microphone | |
| Wireless & Bluetooth | IEEE 802.11a/b/g/n/ac, Bluetooth v4.0 (M.2 slot) | | |
| OSD Function | Software OSD | | |
| Physical | Front Panel Construction | PC + ABS Plastic | PC + ABS Plastic |
| | Mounting | Panel, Wall, Rack, Stand and Arm VESA 75mm x 75mm / 100mm x 100mm | Panel, Wall, Stand and Arm VESA 100mm x 100mm |
| | Color | Black C | Black C |
| | Dimensions (W x H x D) (mm) | 470 x 290 x 70 | 470 x 280 x 60 |
| | Cut-out Dimensions (W x H) (mm) | 443 x 261 | 418 x 230 |
| | Net/Gross Weight (kgs) | 7.3/10 | 6.3/9 |
| Environment | Operating Temperature (Ambient with air flow) | -20°C ~ 50°C | -15°C ~ 50°C |
| | Storage Temperature | -20°C ~ 60°C | |
| | Humidity | 10% to 95% (non-condensing) | |
| | IP Level | IP 64 compliant front panel | |
| | Safety & EMC | CE / FCC | |
| | Thermal Solution | Fanless | |
| Power | Power Requirement | 9V ~ 30V DC | 12V ~ 34V DC |
| | Power Consumption | 12V@7.1A (Intel® Core™ i5-6300U CPU with 4GB DDR4 2133 MHz DDR4 memory) | 12V@3.2A (Intel® Core™ i5-6300U CPU with 4GB DDR4 2133 MHz DDR4 memory) |

AFL3-W22C-ULT3

Intel® Core™ i5 and Celeron® ULT Processor



Features

- W21.5 light industrial interactive panel PC
- 9 V ~ 30 V wide range DC power input
- Selectable AT/ATX power mode
- Built-in speakers
- One mSATA slot
- IP64 compliant front panel
- IEI One Key Recovery solution allows you to create rapid OS backup and recovery (suggested with over 4GB storage capacity)



Specifications

| Model | | AFL3-W22C-ULT3 |
|-----------------------|---|---|
| LCD | Size | 21.5" |
| | Resolution | 1920 x 1080 |
| | Brightness (cd/m ²) | 250 |
| | Contrast Ratio | 1000:1 |
| | LCD Color | 16.7M |
| | Pixel Pitch (mm) | 248.25 (H) × 248.25 (V) |
| | Viewing Angle (H-V) | 170°/160° |
| | Backlight MTBF(hrs) | 30,000 (LED backlight panel) |
| Touch | Touch Screen | Projected capacitive type with USB interface |
| | Touch Controller | EETI EXC3180 |
| Motherboard | CPU | Intel® Core™ i5 and Celeron® ULT Processor |
| | RAM | Two 260-pin 2133/1867 MHz dual-channel DDR4 SO-DIMMs (system max. 32 GB) |
| | Ethernet | 2 x Intel® I211-AT PCIe GbE controller |
| | Audio Codec | ALC892 |
| Storage | | (1) 1 x 2.5" SATA 3Gb/s HDD bay (2) 1 x M.2 M key PCIe storage (2280 or 22110) (3) 1 x mSATA slot |
| I/O Ports & Switch | | 1 x RS-232 by DB-9 (RI/5V/12V) 1 x RS-232/422/485 by DB-9 (RI/5V/12V) 2 x GbE LAN 4 x USB 3.0 1 x HDMI output 1 x Power switch 1 x Reset button 1 x AT/ATX switch 1 x 9-30V lockable power jack |
| Audio | | AMP 3W + 3W (internal speaker) |
| Camera and Microphone | | 2-megapixel with low light function, digital microphone |
| Wireless & Bluetooth | | IEEE 802.11a/b/g/n/ac, Bluetooth v4.0 (M.2 slot) |
| OSD Function | | Software OSD |
| Physical | Front Panel Construction | PC + ABS Plastic |
| | Mounting | Panel, Wall, Stand and Arm VESA 75mm x 75mm / 100mm x 100mm |
| | Color | Black C |
| | Dimensions (W x H x D) (mm) | 528 x 336 x 68 |
| | Cut-out Dimensions (W x H) (mm) | 502 x 303 |
| | Net/Gross Weight (kgs) | 8.27/11.27 |
| Environment | Operating Temperature (Ambient with air flow) | -20°C ~ 50°C |
| | Storage Temperature | -20°C ~ 60°C |
| | Humidity | 10% to 95% (non-condensing) |
| | IP Level | IP 64 compliant front panel |
| | Safety & EMC | CE / FCC |
| Power | Thermal Solution | Fanless |
| | Power Requirement | 9 V ~ 30 VDC |
| | Power Consumption | 12V@6A (Intel® Core™ i5-6300U CPU with 4GB DDR42133 MHz DDR4 memory) |

Heavy Industrial Panel PC Solution

IEI offers complete robust panel solutions for harsh industrial environments. The product portfolio varies from sizes and performance. To catch the wave of cloud computing and intelligent solutions, IEI introduces the iRIS remote management solution to enhance efficiency for system integration. With all these benefits, IEI is your solid solution for industrial computing.



PPC-F Series New Generation Industrial Panel Solution

IEI is dedicated to developing impeccable industrial panel PC products. The PPC and PPC-F series industrial panel PCs not only keep rugged design of IP65 protection but also enrich aesthetic experience by implementing the seamless mounting method. The projected capacitive touch option is added to these new series of products to provide up to 2 points multi-touch solution! Additionally, we also provide high performance H81 series and low power consumption Bay Trail series to meet customers' requests.

■ FHD Industrial Panel PC Available

Going big is the market trend on industrial panel PC and monitor products. Thus, IEI launches new PPC-F series industrial panel PC. Users can enjoy high quality graphics and enriched data display at the same time from FHD panels.

■ Impeccable Front Panel

6H Anti-scratch Touch

The PPC-F series equipped with projected capacitive touchscreen uses 6H hardness vandal proof strengthened glass to prevent damages from physical impact.

Front Bezel IP65 Protection

Designed for harsh environments, the PPC-F series provides front bezel IP65 protection to resist dust and water jet.



PPC-F Bay Trail Fanless Series

5.7"/8"/10.4" Fanless Intel® Bay Trail Solution

Features

- 5.7", 8" and 10.4" fanless industrial panel PC
- 2.0 GHz Intel® Celeron® J1900 quad-core processor or 1.58 GHz Intel® Celeron® N2807 dual-core processor
- Low power consumption DDR3L memory supported
- IP 65 compliant front panel
- 9 V~30 V wide DC input
- mSATA SSD supported
- Dual GbE for backup
- -10°C~50°C extended operating temperature



Specifications

| Model | | PPC-F06B-BT | PPC-F08B-BT | PPC-F10B-BT |
|------------------|---------------------------------------|--|---|---|
| LCD | LCD Display | 5.7" (4:3) | 8" (4:3) | 10.4" |
| | Max. Resolution | 640 (W) x 480 (H) | 800 (W) x 600 (H) | 800 (W) x 600 (H) |
| | Brightness (cd/m²) | 550 | 500 | 400 |
| | Contrast Ratio | 800:1 | 500:1 | 700:1 |
| | LCD Color | 262K | 16.2M | 16.2M |
| | Pixel Pitch (mm) | 0.18 (H) x 0.18 (V) | 0.2025 (H) x 0.0675 (V) | 0.264 (H) x 0.264 (V) |
| | Viewing Angle (H-V) | 160° / 140° | 140° / 120° | 160° / 140° |
| | Backlight MTBF (hrs) | 50000 | 50000 | 30000 |
| Motherboard | CPU | Intel® Celeron® N2807 dual-core processor, 1.58GHz | Intel® Celeron® J1900 quad-core on-board SoC, 2GHz | |
| | RAM | 2GB DDR3L 1600MHz on-board RAM (system max. 4GB, by MOQ=300pcs) | 1 x 204-pin DDR3L SO-DIMM slots (max. 8GB) | |
| Touch | Touchscreen & Controller | 4-wire resistive type flat touch window, PenMount DMC9000 | 5-wire resistive type flat touchscreen, PenMount DMC9000 | |
| | Surface Hardness | 3H | 3H | 3H |
| Input Interfaces | I/O Ports & Switches | 2 x RJ-45 LAN port 1 x RS-232 COM port (DB-9 connector) (RI/5V/12V) 1 x RS-422/485 2 x USB 3.0 2 x USB 2.0 1 x 9 V~30 V DC lockable DC jack (2-pin) 1 x Audio port (line-out) 1 x Power switch 1 x Reset button 1 x AT/ATX switch | 1 x RS-232 COM port (RJ-45 connector) 1 x RS-232/422/485 COM port (DB-9 connector) (RI/5V/12V) 2 x USB 3.0 2 x GbE LAN 1 x Power switch 1 x Reset button 1 x AT/ATX switch 1 x Audio port (line-out) 1 x 9 V~30 V lockable power jack | 1 x RS-232 COM port (RJ-45 connector) 1 x RS-232/422/485 COM port (DB9 connector) (RI/5V/12V) 2 x USB 2.0 2 x USB 3.0 2 x GbE LAN 1 x Power switch 1 x Reset button 1 x AT/ATX switch 1 x Audio port (line-out) 1 x 9 V~30 V lockable power jack |
| | Expansion | 1 x Full-size PCIe Mini slot (mSATA/PCIe/USB signal) | 1 x Full-size PCIe Mini slot (mSATA/PCIe/USB signal) 1 x Full-size/half-size PCIe Mini slot (PCIe/USB signal) | |
| Wireless LAN | | 802.11 b/g/n (optional) | | |
| Storage | SSD | mSATA | mSATA | mSATA |
| | HDD | N/A | N/A | 1 x 2.5" HDD bay |
| Physical | Construction Material | Aluminum front bezel | | |
| | Mounting | Stand, panel mount, rack mount, VESA 75x75 | Stand, panel mount, rack mount, VESA 75x75 | Stand, panel mount, rack mount, VESA 75x75/100x100 |
| | Enclosure Color | Black C | | |
| | Dimensions (mm) | 136.4 x 178.5 x 56.3 | 182.2 x 222.2 x 44 | 232.4 x 285.2 x 44 |
| | Net Weight | 0.89 kg | 1.17 kg | 1.77 kg |
| | Cut-out Dimensions (mm) | 157.5 x 115.4 | 207 x 154 | 267.2 x 214.4 |
| Environment | Operating Temperature (with air flow) | -10°C~50°C (14°F~122°F) | | |
| | Storage Temperature | -20°C~60°C (-4°F~140°F) | | |
| | Humidity | 10% to 95% (non-condensing) | | |
| | IP Level | IP 65 compliant front panel | | |
| | Safety and EMC | CE & FCC Class A certified | | |
| Power | Power Adapter | P/N: 63040-010036-121-RS 36W Power Adapter Input: 90 - 264V AC, 50/60Hz Output: 12V DC | | |
| | Power Requirement | 9 ~ 30V DC | | |
| | Power Consumption | 24W | 28W | 34W |

PPC-F Bay Trail Fanless Series

12"/15"/17"/19" Fanless Intel® Bay Trail Solution

Features

- Support IEI iRIS-2400 remote intelligent solution
- Intel® Celeron® J1900 quad-core SoC
- Robust IP65 aluminum front bezel
- Aesthetic ultra-thin bezel for seamless panel mount installation
- Projected capacitive multi-touch and resistive single touch options
- Dual full-size PCIe Mini card expansion
- 9V~36V DC wide range DC input



Specifications

| Model | | PPC-F12B-BT | PPC-F15B-BT | PPC-F17B-BT | PPC-F19B-BT |
|----------------------------|---------------------------------------|---|--------------------|----------------------|-----------------------|
| LCD | LCD Display | 12.1" (4:3) | 15" (4:3) | 17" (5:4) | 19" (5:4) |
| | Max. Resolution | 1024 (W) x 768 (H) | 1024 (W) x 768 (H) | 1280 (W) x 1024 (H) | 1280 (W) x 1024 (H) |
| | Brightness (cd/m ²) | 600 | 450 | 350 | 350 |
| | Contrast Ratio | 700 : 1 | 800 : 1 | 800 : 1 | 1000 : 1 |
| | LCD Color | 16.2M | 16.2M | 16.7M | 16.7M |
| | Pixel Pitch (mm) | 0.24 x 0.24 | 0.297 x 0.297 | 0.26 x 0.26 | 0.294 x 0.294 |
| | Viewing Angle (H-V) | 160° / 140° | 160° / 150° | 170° / 160° | 170° / 160° |
| Backlight MTBF (hrs) | 50000 | 70000 | 50000 | 50000 | |
| Motherboard | CPU | Intel® Celeron® processor J1900 (2M cache, up to 2.42 GHz) | | | |
| | RAM | 2 x 204-pin DDR3L SO-DIMM slot (max. 8GB), pre-installed with 2GB | | | |
| Touch | Touchscreen & Controller | 5-wire resistive type single touch window (Penmount 9000), 3H 2-point projected capacitive touch window (EETI EXC7200), 6H | | | |
| Input Interfaces | I/O Ports & Switches | 2 x RJ-45 LAN port 2 x USB 3.0 2 x USB 2.0 1 x HDMI 2 x RS-232 1 x RS-232/422/485 1 x VGA 1 x 9 V~36 V DC jack (4-pin) 1 x 9 V~36 V DC terminal block 1 x Line-out (PPC-F15B & PPC-F17B & PPC-F19B only) 1 x Power switch | | | |
| | Expansion | 1 x Full-size PCIe Mini slot (mSATA/PCIe/USB signal) 1 x Full-size/half-size PCIe Mini slot (PCIe/USB signal) | | | |
| Wireless LAN | | 802.11 b/g/n (optional) | | | |
| Drive Bay | | 1 x 2.5" HDD/SSD drive bay | | | |
| Remote Management Solution | | iRIS-2400, QTS-Gateway | | | |
| Physical | Construction Material | Aluminum front panel and sheet metal rear cover | | | |
| | Mounting | Panel mount, rack mount, VESA 100x100 | | | |
| | Enclosure Color | Black C | | | |
| | Dimensions (mm) (W x L x D) | 262.2 x 322.2 x 47.2 | 303 x 378.5 x 46.2 | 341.4 x 408.4 x 51.8 | 372.4 x 447.4 x 52.87 |
| | Weight (Net) | 3.2 kg | 4.1 kg | 5 kg | 6.5 kg |
| | Cutout Dimensions (mm) | 244.8 x 304.8 | 285.6 x 361 | 323 x 390 | 355 x 430 |
| Environment | Operating Temperature (with air flow) | -10°C~50°C (14°F~122°F) | | | |
| | Storage Temperature | -20°C~60°C (-4°F~140°F) | | | |
| | Humidity | 10% to 95% (non-condensing) | | | |
| | IP Level | IP 65 compliant front panel | | | |
| | Safety and EMC | CE & FCC Class A certified | | | |
| Power | Power Adapter | P/N: 63040-010060-110-RS 60W Power Adapter Input: 90 - 264V AC, 50/60Hz Output: 12V DC | | | |
| | Power Requirement | 9 V~36 V DC | | | |
| | Power Consumption | 40W | 41W | 42W | 33W |

PPC-F H81 Series



Intelligent Industrial Panel PC

- Support IEI iRIS-2400 IEI remote intelligent solution
- Scalable Intel® H81 chipset supports LGA1150 Intel® 4th generation Core™ i7/i5/i3, Pentium® or Celeron® processor with up to 65W TDP
- Robust IP65 aluminum front bezel
- Aesthetic ultra-thin bezel for seamless panel mount installation
- Projected capacitive multi-touch
- Dual full-size PCIe Mini card expansion
- AC/DC power input options (DC model by build to order manufacturing)



Specifications

| Model | | PPC-F15A | PPC-F17A | PPC-F22A | PPC-F24A |
|---------------------------------|---------------------------------------|---|---|---|--|
| LCD | LCD Display | 15" (4:3) | 17" (5:4) | 21.5" (16:9) | 23.8" (16:9) |
| | Max. Resolution | 1024(W) x 768(H) | 1280(W) x 1024(H) | 1920(W) x 1080(H) | 1920(W) x 1080(H) |
| | Brightness (cd/m ²) | 450 | 350 | 250 | 250 |
| | Contrast Ratio | 800 : 1 | 800 : 1 | 1000 : 1 | 3000 : 1 |
| | LCD Color | 16.2M | 16.7M | 16.7M | 16.7M |
| | Pixel Pitch (mm) | 0.297 x 0.297 | 0.26 x 0.26 | 0.25 x 0.25 | 0.28 x 0.28 |
| | Viewing Angle (H-V) | 160° / 150° | 170° / 160° | 170° / 160° | 178° / 178° |
| | Backlight MTBF (hrs) | 70000 | 50000 | 30000 | 30000 |
| Motherboard | SBC Model | FPPCMB-H81-R10 | | | |
| | CPU | LGA1150 Intel® 4th generation Core™ i7/i5/i3, Pentium® or Celeron® processor with up to 65W TDP | | | |
| | Chipset | Intel® H81 | | | |
| | RAM | Support 2 x 204-pin 1066/1333/1600 MHz dual-channel DDR3 SO-DIMM slots (max. 16GB) | | | |
| Touch | Touchscreen & Controller | 5-wire resistive type single touch window (Penmount 9000), 3H 2-point projected capacitive touch window (EETI EXC7200), 6H | | 2-point projected capacitive touch window (EETI EXC7200), 6H | 2-point projected capacitive touch window (EETI EXC7200), 6H |
| | | Input Interfaces | I/O Ports & Switch | | I/O Ports & Switch |
| Expansion | | | 1 x Full-size/half-size PCIe Mini card (PCIe and USB signal) 1 x Full-size/half-size PCIe Mini card (PCIe, USB and mSATA signal) | | |
| Wireless LAN | | 802.11 b/g/n (optional) | | | |
| Storage | | 1 x 2.5" HDD/SSD drive bay 1 x mSATA | | 1 x 2.5" HDD/SSD drive bay or 1 x 3.5" HDD/SSD drive bay 1 x mSATA | |
| iRIS Remote Management Solution | | iRIS-2400 (optional) | | | |
| Physical | Construction Material | Aluminum front cover and sheet metal rear cover | | | |
| | Mounting | Panel mount, rack mount, 100x100 VESA mount | | Panel mount, 100x100 VESA mount | |
| | Enclosure Color | Black C | | | |
| | Dimensions (mm) | 303 x 378.5 x 65.7 | 341.4 x 408.4 x 73.8 | 350.4 x 550.4 x 71.7 | 382 x 600 x 71.7 |
| | Cutout Dimensions (mm) | 285.6 x 361.1 | 323 x 390 | 341 x 536 | 359.6 x 577.6 |
| | Net/ Gross Weight (kg) | 5.6/ 8.3 | 7.5/10.7 | 10.1/14.4 | 10.5/14.8 |
| Environment | Operating Temperature (with air flow) | -10°C ~ 50°C | | | |
| | Storage Temperature | -20°C ~ 60°C | | | |
| | Humidity | 10% to 95% (non-condensing) | | | |
| | IP Level | Front IP 65 | | | |
| | Safety and EMC | CE & FCC certified | | | |
| Power Supply | AC Input | AC input ATX power supply - P/N: 63030-010220-100-RS - 220W power supply - Input: 90VAC-264VAC, 50/60Hz - Output (max.): 3.3V@10A, 5V@14A, 12V@14A, -12V@0.3A | | | |
| | DC Input (produced by order) | DC input ATX power supply - P/N: XACE-4520C-RS - 200W power supply - Input: 24VDC, 15A (max) - Output (max.): 3.3V@12A, 5V@12A, 12V@15.4A, -12V@0.5A | | | |
| Power Consumption | | 80W | 100W | 110W | 120W |

ARM-PPC-F / DM-F SERIES



ARM Mounted Panel PC & Monitors

- In an aluminum housing with complete IP65 protection
- Available series: PPC-F-BT / PPC-F-H81 / DM-F in Display sizes from 6" till 24"
- With arm system and internal wires
- Individual mounting with control buttons is available

The arm panel PC and monitors combine the latest PPC-F / DM-F series and an appropriate aluminum housing designed by the cooperation partner ROLEC.

In general, the arm solutions provide flexible arm mounting, complete IP65 housing protection, inset cabling and ergonomic handling.

| Screen size | 15" | 17" | 19" | 22" | 24" |
|---------------------------------|-------------------------------------|----------------|----------------|----------------------|------------|
| Available models | | | | | |
| Panel PC Haswell Baytrail | PPC-F15B | PPC-F17B | PPC-F19B | PPC-F22A | PPC-F24A |
| Monitor | DM-F15 | DM-F17 | DM-F19 | DM-F22 | DM-F24 |
| Touch | resistive / projected capacitive | | | projected capacitive | |
| Coating of housing | RAL 9005 fine structure | | | | |
| Front panel | 3mm, silver anodized | | | | |
| Rear panel | standard framed door 15mm | | | | |
| IP level | IP65 / EN 60529 | | | | |
| Temperature range | 0°C bis +40°C | | | | |
| Housing dim. (mm) | 431x506,6x85 | 470,1x536,5x85 | 500,5x575,5x85 | 486,5x678,5x85 | 497x725x85 |

FLEX-PL Series

15"~24" TFT LCD/Touch Kit for Flex Panel PC

NEW



Specifications

| Model | | FLEX-PL15 | FLEX-PLW15 | FLEX-PL17 | FLEX-PLW19 | FLEX-PLW22 | FLEX-PLW24 |
|--------------|---------------------------------|--|---------------|-------------|------------|---|---------------|
| TFT LCD | LCD Size | 15" | 15.6" | 17" | 18.5" | 21.5" | 23.8" |
| | Max. Resolution | 1024x768 | 1336x768 | 1280x1024 | 1336x768 | 1920x1080 | 1920x1080 |
| | Brightness (cd/m ²) | 450 | 400 | 350 | 400 | 250 | 250 |
| | Contrast Ratio | 800:1 | 500:1 | 1000:1 | 1000:1 | 1000:1 | 3000:1 |
| | LCD Color | 16.2M | 16.2M | 16.7M | 16.7M | 16.7M | 16.7M |
| | Pixel Pitch (mm) | 0.29 x 0.29 | 0.252 x 0.252 | 0.26 x 0.26 | 0.3 x 0.3 | 0.25 x 0.25 | 0.274 x 0.274 |
| | Viewing Angle (H/V) | 160°/150° | 170°/160° | 170°/160° | 170°/160° | 170°/160° | 178°/178° |
| Touch Screen | Backlight MTBF (Hrs) | 70,000 | 50,000 | 50,000 | 50,000 | 30,000 | 30,000 |
| | Type | 5-wire resistive touch window with anti-glare coating/ projected capacitive type with 10-point multitouch and anti-glare coating | | | | Projected capacitive type with 10-point multitouch and anti-glare coating | |
| | Touch Controller | Resistive type: Penmount 9000 Projected capacitive type: EETI EXC3000 | | | | EETI EXC3000 | |

FLEX-BX200

2U AI Box PC with 8th Generation LGA1151 Core™ i7/i5/i3, Celeron® and Pentium® Processor

NEW



Features

- 2U AI Box PC with 8th Generation LGA 1151 Intel® Core™ i7/i5/i3, Celeron® and Pentium® processor
- Four hot-swappable and accessible HDD drive bays, support RAID 0/1/5/10
- Two PCIe 3.0 by 4 and two PCIe 3.0 by 8 slots
- Dual M.2 NVMe PCIe 3.0 x4 slots

Specifications

| Model | | FLEX-BX200-Q370 | |
|------------------------|---|--|--|
| System | CPU | 8th Generation Intel Core™ i7/i5/i3 processors in the LGA 1151 package | |
| | Chipset | Intel® Q370 Chipset | |
| | Memory | 2 x 288-pin 2666/2400 MHz dual-channel DDR4 unbuffered DIMM supporting up to 64GB | |
| | Graphics Engine | Intel® HD Graphics Gen 9 Engines with 16 low-power execution units, supports DX2015, OpenGL 5.X and OpenCL 2 x, ES 2.0 | |
| | Ethernet | Intel® I211 controller | |
| Storage | 4 x Accessible 2.5" SATA 6Gb/s HDD/SSD bay (RAID 0/1/5/10 support) with LED indicator 2 x NGFF M.2 M-key 2280 PCIe/NVMe SSD socket | | |
| I/O Ports and Switches | 1 x HDMI output 2 x GbE LAN 6 x USB 3.0 Type-A 2 x RS-232 DB-9 type 1 x Mic in | 1 x Line out 1 x AC power in Inlet Power button with power LED (power on=Blue) AT/ATX mode switch Reset button | |
| Expansion Slots | 2 x PCIe 3.0 by 8 (by 16 slot) 2 x PCIe 3.0 by 4 (maximum card size supported: 68 mm x 167 mm) | | |

RISC Based Panel PC Solution

The IOVU RISC Based PC Series enables the great embedded flexibility for smart factory, building automation, factory control, and medical usage applications. Making use of the low power consumption RISC platform, the IOVU series adopts a fan-less and power efficient design, providing a cost-effective, stable, and easy to use solution to collect, transfer, process, access, and manage data.

IOBA-10F-AD

10.1" RISC Based Panel PC



Features

- 10.1" 1280x800 LCD
- Project Capacitive Touch Screen
- CPU: Freescale i.MX6 Cortex-A9 Quad-Core 1GHz
- OS: Android 5.1
- Boot Flash: 8GB eMMC Nand Flash
- RAM: 2GB DDR3 SDRAM on board
- Grove Interface IOT Sensor connectors

Specifications



| Model | IOBA-10F-AD-R10 | IOBA-10F-AD-ET-R10 |
|---------------------------------|--|--|
| LCD Size | 10.1" (16:9) | |
| Resolution | 1280(W) x 800(H) | |
| Brightness (cd/m ²) | 300 | |
| Contrast Ratio | 800:01:00 | |
| LCD Color | 262K | |
| Pixel Pitch (mm) | 0.1695 x 0.1695 | |
| Viewing Angle | 85/85/85/85 Deg. | |
| Backlight MTBF(hrs) | 20000 | |
| Touch Screen | Project Capacitive | |
| CPU | Freescale i.MX6 Cortex-A9 Quad Core 1.0GHz | |
| RAM | 2GB DDR3 SDRAM on board | |
| Boot Flash | 8G eMMC Nand Flash | |
| OS | Android 5.1 | |
| Input / Output | 1 x 10/100/1000 Mbps Ethernet POE (LAN) 1 x 10/100/1000 Mbps Ethernet 2 x USB 2.0 1 x RS-232/422/485 support software controllable(DB9) 1 x RS-232 (Grove Interface) 1 x NFC (13.56MHz) 3 x Analog sensor connectors (4pin) 3 x I2C sensor connectors (4pin) 1 x DIO1 (6-pin) 1 x DIO2 (4pin) (Grove Interface) 1 x DIO3 (4pin) (Grove Interface) 1 x DC jack 1 x Reset button 1 x MicroSD slot | 1 x 10/100/1000 Mbps Ethernet 2 x USB 2.0 1 x RS-232/422/485 support software controllable(DB9) 1 x DC jack 1 x Reset button 1 x MicroSD slot |
| Audio | 1 x 2W Speaker | |
| Camera | 1 x 2MP CMOS webcam | |

Preliminary

IOVU-207AR-RK39

7" RISC-based Panel PC



Features

- OS: Android 7.1 or Linux Ubuntu 16.04
- CPU: Rockchip RK3399
(Dual-core Cortex-A72 up to 2.0GHz. Quad-core Cortex-A53 up to 1.5GHz)
- Boot Flash: 16G eMMC Nand Flash
- RAM: 2GB LPDDR3-1866
- 1 x SOS Key (with red bar):
Press for calling help in case emergency
- 2 x Function Keys (with green bar):
Default hot key by AP programming

Specifications



| Model | | IOVU-207AR-RK39 |
|------------------------|---------------------------------|---|
| Chassis | Color | White |
| | Dimensions (WxHxD) (mm) | 210.7 x 154.7 x 29.6 |
| | System Fan | Fanless |
| | Chassis Construction | PC + ABS plastic front, Metal rear |
| Display | Size | 7" |
| | Resolution | 720 RGB (H) x 1280 (V) |
| | Brightness (cd/m ²) | 300 cd/m ² (typ.) |
| | Contrast Ratio | 800:1 (typ.) |
| | Pixel Pitch (mm) | 0.1239 (H) x 0.119 (V) |
| | Viewing Angle (H/V) | 70/70/70/70 Deg. |
| | Touchscreen | Projected capacitive |
| Motherboard | CPU | Rockchip RK3399 (Dual-core Cortex-A72 up to 2.0GHz. Quad-core Cortex-A53 up to 1.5GHz) |
| | System Memory | 2GB LPDDR3-1866 |
| Storage | SD Card | 1 x Micro SD slot |
| | Flash | 16GB eMMC NAND FLASH |
| Communication | WLAN | 802.11 a/b/g/n/ac |
| | Bluetooth | Bluetooth V4.1 |
| I/O Interfaces | COM port | 2 x UART pin header with 3V (internal) |
| | Ethernet | 1 x GbE RJ45 by RTL8211E |
| | USB 3.0 | 1 x USB 3.0 Type A |
| | USB 2.0 | 1 x USB 2.0 Type A 2 x USB 2.0 pin header (internal) |
| | Others | 2 x SOS button key (2 pin terminal block) |
| Multimedia | Audio | 1 x Speaker (2 W) , 1 x Digital Mic in |
| | Camera | Front 5-megapixel (CMOS) |
| LED Indicator & Button | Indicator | 1 x Power LED 1 x Mail 1 x Phone 1 x Exclamation Mark |
| | Button | 1 x Reset Button 1 x SOS Key (red bar) 2 x Function Key (green bar) |
| Power | Power Input | 9 V~30 V DC input φ2.5/5.5mm DC Jack |
| | Consumption | TBD |
| Reliability | Mounting | VESA Mount 75mmx75mm |
| | Operating Temperature | -10°C ~ 50°C with air flow |
| | Storage Temperature | -20°C ~ 60°C |
| | Humidity | 10% ~ 95%, non-condensing |
| | Weight (Net/Gross) | TBD |
| | Safety/EMC | CE/FCC Class B |
| OS | Supported OS | Android 7.1 or Linux Ubuntu 16.04 |
| | Watch dog timer | Yes |

IOVU-210AD-RK39

10.1" RISC Base Panel PC

Preliminary



Features

- 10.1" 1280x800 LCD
- Project Capacitive Touch Screen
- CPU: Rockchip RK3399 (Dual-core Cortex-A72 up to 2.0GHz. Quad-core Cortex-A53 up to 1.5GHz)
- OS: Android 7.1 or Linux Ubuntu 16.04
- Boot Flash: 16GB eMMC Nand Flash
- RAM: 2GB LPDDR3



Specifications

| Model | IOVU-210AD-RK39 | |
|------------------------|---------------------------------|--|
| Chassis | Color | White |
| | Dimensions (WxHxD) (mm) | 293 x 209.5 x 44.5 |
| | System Fan | Fanless |
| | Chassis Construction | PC + ABS plastic front, Metal rear |
| Display | Size | 10.1" |
| | Resolution | 800(RGB) x 1280 |
| | Brightness (cd/m ²) | 350 cd/m ² (typ.) |
| | Contrast Ratio | 800:1(typ.) |
| | Pixel Pitch (mm) | 0.0564(H) x 0.1692(V) |
| | Viewing Angle (H/V) | 85/85/85/85 Deg. |
| | Touchscreen | Project Capacitive |
| Motherboard | CPU | Rockchip RK3399 (Dual-core Cortex-A72 up to 2.0GHz. Quad-core Cortex-A53 up to 1.5GHz) |
| | System Memory | 2GB LPDDR3-1866 |
| Storage | SD Card | 1 x Micro SD slot (Internal) |
| | Flash | 16GB eMMC NAND FLASH |
| Communication | WLAN | 802.11 a/b/g/n/ac |
| | Bluetooth | Bluetooth V4.1 |
| | RFID | 13.56 MHz(NFC) |
| I/O Interfaces | COM port | 1 x RS-232 (DB-9) 1 x RS-232/422/485 (DB-9) |
| | GPIO | 4 bit (2 in, 2 out) |
| | Ethernet | 1 x GbE RJ45 by RTL8211E w/ PoE |
| | USB 3.0 | 1 x USB 3.0 Type A |
| | USB 2.0 | 2 x USB 2.0 Type A 2 x USB 2.0 pin header (internal) |
| | Multimedia | Audio |
| LED Indicator & Button | Camera | Front 5-megapixel (CMOS) |
| | Indicator | 1 x Power, 1 x BT, 1 x Wi-Fi |
| Power | Button | 1 x Reset Button |
| | Power Input | 9 V~30 V * DC input: φ2.5/5.5mm DC Jack or Terminal block * PoE: IEEE 802.3 at standard (Power Device) |
| Reliability | Consumption | TBD |
| | Mounting | VESA Mount 100mmx100mm |
| | Operating Temperature | -10°C ~ 50°C with air flow |
| | Storage Temperature | -20°C ~ 60°C |
| | Humidity | 10% ~ 95%, non-condensing |
| | Weight (Net/Gross) | TBD |
| | Safety/EMC | CE/FCC Class A |
| OS | Supported OS | Android 7.1 or Linux Ubuntu 16.04 |
| | Watch dog timer | Yes |

* When both DC-in and PoE are connected to the device, the connection with higher voltage will be the main power source.

IOVU-210AR-RK39

10.1" RISC Base Panel PC

Preliminary



Features

- 10.1" 1280x800 LCD
- Project Capacitive Touch Screen
- CPU: Rockchip RK3399 (Dual-core Cortex-A72 up to 2.0GHz. Quad-core Cortex-A53 up to 1.5GHz)
- OS: Android 7.1 or Linux Ubuntu 16.04
- Boot Flash: 16GB eMMC Nand Flash
- RAM: 2GB LPDDR3-1866
- Grove Interface IOT Sensor connectors



Specifications

| Model | | IOVU-210AR-RK39 |
|------------------------|---------------------------------|---|
| Chassis | Color | White |
| | Dimensions (WxHxD) (mm) | 282.5 x 174.3 x 26.8 |
| | System Fan | Fanless |
| | Chassis Construction | PC + ABS plastic |
| Display | Size | 10.1" |
| | Resolution | 800(RGB) x 1280 |
| | Brightness (cd/m ²) | 350 cd/m ² (typ.) |
| | Contrast Ratio | 800:1(typ.) |
| | Pixel Pitch (mm) | 0.0564(H) ×RGB×0.1692(V) |
| | Viewing Angle (H/V) | 85/85/85 Deg. |
| | Touchscreen | Project Capacitive |
| Motherboard | CPU | Rockchip RK3399 (Dual-core Cortex-A72 up to 2.0GHz. Quad-core Cortex-A53 up to 1.5GHz) |
| | System Memory | 2GB LPDDR3-1866 |
| Storage | SD Card | 1 x Micro SD slot |
| | Flash | 16GB eMMC NAND FLASH |
| Communication | WLAN | 802.11 a/b/g/n/ac |
| | Bluetooth | Bluetooth V4.1 |
| | RFID | 13.56 MHz(NFC) |
| I/O Interfaces | COM port | 1 x RS-232 (4 pin terminal block) 1 x RS-232/422/485 (4 pin wafer connector) 2 x UART pin header with 3V (internal) |
| | GPIO | 1 x 4 bit (2 in, 2 out) 2 x 2 bit (1 in, 1 out) |
| | Ethernet | 1 x GbE RJ45 by RTL8211E with PoE (PD) 1 x GbE RJ45 by RTL8211E |
| | USB 3.0 | 1 x USB 3.0 Type A |
| | USB 2.0 | 1 x USB 2.0 Type A 2 x USB 2.0 pin header (internal) |
| | Others | 3 x I ² C sensor connectors (3V) |
| Multimedia | Audio | 2 x Speaker (1.5W), 1 x Digital Mic in |
| | Camera | Front 5-megapixel (CMOS) |
| LED Indicator & Button | Indicator | 1 x Power LED 1 x NFC LED |
| | Button | 1 x Reset button 2 x Volume key (up / down) on screen 1 x SOS key on screen |
| Power | Power Input | 9 V~30 V * DC input: φ2.5/5.5mm DC Jack * PoE: IEEE 802.3 at standard (Power Device) |
| | Consumption | TBD |
| Reliability | Mounting | Panel mount, In wall cage |
| | Operating Temperature | -10°C ~ 50°C with air flow |
| | Storage Temperature | -20°C ~ 60°C |
| | Humidity | 10% ~ 95%, non-condensing |
| | Weight (Net/Gross) | TBD |
| | Safety/EMC | CE/FCC Class B |
| OS | Supported OS | Android 7.1 or Linux Ubuntu 16.04 |
| | Watch dog timer | Yes |

* When both DC-in and PoE are connected to the device, the connection with higher voltage will be the main power source.

AFOKAR-08A-RK39

Vehicle Computer Series

Preliminary



Features

- 8" sunlight readable TFT LCD with projected capacitive touchscreen
- Optional LTE module
- Built-in GPS receiver
- Built-in OBD-II/J1939
- OS: Android 7.1 & Ubuntu 16.04



Specifications

| Model Name | | AFOKAR-08A-RK39 |
|------------------------|---------------------------------|---|
| Chassis | Color | Black C + Silver |
| | Dimensions (WxHxD) (mm) | 210 x 154 x 33.9 |
| | System Fan | Fanless |
| | Chassis Construction | PC + ABS plastic |
| Display | Size | 8" |
| | Resolution | 800(RGB) × 1280 |
| | Brightness (cd/m ²) | 500 cd/m ² (typ.) |
| | Contrast Ratio | 800 : 1 (typ.) |
| | Pixel Pitch (mm) | 0.13455(H) × 0.13455(V) |
| | Viewing Angle (H/V) | 85/85/85/85 Deg. |
| | Touchscreen | Projected capacitive with AG coating |
| Motherboard | CPU | Rockchip RK3399 (Dual-core Cortex-A72 up to 2.0GHz. Quad-core Cortex-A53 up to 1.5GHz) |
| | System Memory | 2GB LPDDR3-1866 |
| Storage | SD Card | 1 x Micro SD slot |
| | Flash | 16GB eMMC NAND FLASH |
| Communication | WLAN | 802.11 a/b/g/n/ac |
| | Bluetooth | Bluetooth V4.1 |
| | WWAN | PCIe Mini LTE (optional) |
| | RFID | 13.56 MHz (NFC) |
| | GPS | On board GPS |
| I/O Interfaces | 20-pin Connector | ** 1 x Camera input ** 1 x OBD-II/J1939 ** 1 x USB 2.0 |
| | 24-pin Connector | ** 1 x Audio line-out (R+L) ** 1 x RS-232 ** 1 x RS-485 ** 4 bit digital I/O (2-bit input, 2-bit output) |
| | USB 3.0 | 1 x USB 3.0 Type A |
| | Display | 1 x HDMI output |
| | SIM | 1 x on board SIM card slot |
| | Antenna | 1 x GPS, 1 x WWAN |
| | Expansions | PCIe Mini |
| Multimedia | Speaker | 1 x Speaker (2 W) |
| | Camera | 5-megapixel CMOS |
| LED Indicator & Button | Indicator | Power/BT/Wi-Fi/3G |
| | Button | 1 x Power button |
| Power | Power Input | DC 9 V~30 V, 4 pin connector (with ACC Ignition) |
| | Consumption | TBD |
| Reliability | Mounting | VESA Mount 75mm x 75mm |
| | Operating Temperature | -10°C ~ 50°C with air flow |
| | Storage Temperature | -20°C ~ 60°C |
| | Humidity | 10% ~ 95%, non-condensing |
| | Operating Shock | Half-sine wave shock 5G, 11ms, 3 shocks per axis |
| | Operating Vibration | MIL-STD-810F 514.5C-2 |
| | Weight (Net/Gross) | TBD |
| | Safety/EMC | CE/FCC/E-Mark/IP 54 compliant front panel |
| OS | Supported OS | Android 7.1 or Linux Ubuntu 16.04 |
| | Watch dog timer | Yes |

Industrial Monitor Solution

Durable waterproof displays are essential in today's commercial and industrial applications. IEI's versatile lines of flat-bezel IP 65 compliant industrial displays with shock and vibration resistance are designed specifically to endure the rigorous demands of modern commerce and industrial environments. These displays are easily integrated into automation applications, ATM machines and human machine interfaces.



Industrial Monitor Introduction

Display Monitor



DM-F Series

- IP65 flat-bezel
- Resistive touch window: 6H anti-scratch PCAP multi-touch
- HDMI/DP high definition audio/video interface
- 9~36V wide range DC input

Maritime Monitor



SxxM Series

- IP66 flat-bezel
- PCAP multi-touch
- DVI/VGA/BNC output and BNC input
- Redundant power : AC and 18-36V DC
- 0%~100% dimmable LCD backlight
- Remote OSD control by serial port or LAN port
- Duplicate daisy chain monitor connection by VGA port

| Product Line | DM-F Series | SxxM series |
|---------------------------------|--|---|
| LCD Size | 6.5" ~ 24" | 19" / 24" |
| Input Signal Interface | 6.5"/ 8": VGA+DVI-D 12.1" ~ 24": VGA+HDMI+DisplayPort | 2 x VGA, 2 x DVI 1 x BNC input, 1 x BNC output |
| Brightness (cd/m ²) | 250 ~ 800 | 300 |
| Operating Temperature | -20°C ~ 60°C | -15°C ~ 55°C |
| OSD Function | Yes | Yes |
| IEI samrOSD Support | Yes | - |
| Front Panel Protection | IP 65 | IP 66 |

Heavy Industrial Monitor

6.5"~15.6" DM-F IP65 Industrial Monitor

Features

- Robust IP65 aluminum front bezel
- Aesthetic ultra-thin bezel for seamless panel mount installation
- DC input
- DVI / VGA flexible video input solution
- Resistive single touch
- Wide temperature support



Specifications

Preliminary

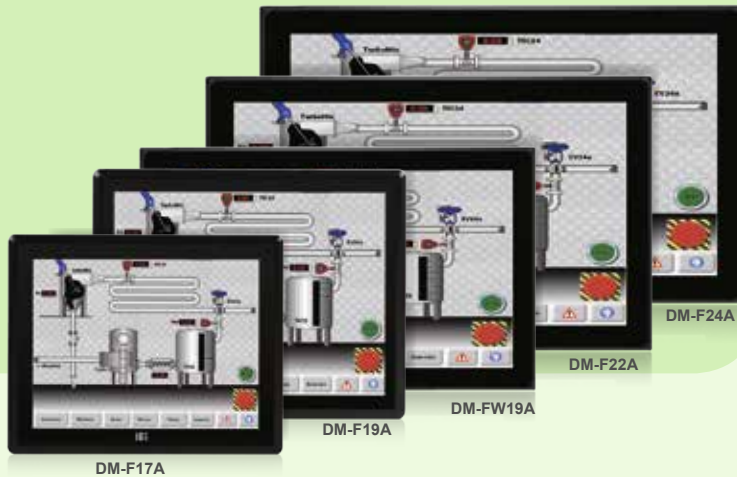
| Model | | DM-F65A | DM-F08A | DM-F12A | DM-F15A | DM-FW15A |
|--------------------------|---------------------------------------|--|----------------------|--|-------------------------|------------------------|
| LCD | LCD Display | 6.5" (4:3) | 8" (4:3) | 12" (4:3) | 15" (4:3) | 15.6" (16:9) |
| | Max. Resolution | 640 (W) x 480 (H) | 800 x 600 | 1024 (W) x 768 (H) | 1024 (W) x 768 (H) | 1336 (W) x 768 (H) |
| | Brightness (cd/m ²) | 800 | 500 | 600 | 450 | 400 |
| | Contrast Ratio | 600:1 | 500:1 | 700 : 1 | 800 : 1 | 500:1 |
| | LCD Color | 16.2M | 262K | 16.2M | 16.2M | 16.2M |
| | Pixel Pitch (mm) | 0.207 x 0.207 | 0.0675 x 0.2025 | 0.24 x 0.24 | 0.29 x 0.29 | 0.252 x 0.252 |
| | Viewing Angle (H-V) | 160° / 140° | 140°/120° | 160° /140° | 160° / 150° | 170° / 160° |
| | Backlight MTBF (Hrs) | 50000 | 50000 | 50000 | 70000 | 50000 |
| Touchscreen & Controller | | 5-wire resistive single touch window/ Penmount 6000 | | 5-wire resistive single touch window/ Penmount 6000 2-point projected capacitive touch window/ EETI EXC3000 | | |
| I/O Ports | | 1 x VGA (DB-15) 1 x DVI 1 x USB 2.0 (touch) 1 x RS-232 (reserved for resistive touch ATO) 1 x Lockable 12V DC jack | | 1 x VGA (DB-15) 1 x HDMI 1 x DisplayPort 1.1 1 x USB 2.0 (touch) 1 x RS-232 (reserved for resistive touch ATO) 1 x Lockable 9V-36V DC jack 1 x 9V-36V terminal block | | |
| OSD | OSD Button | 5-key membrane OSD keypad | | 7-key membrane OSD keypad | | |
| | Smart OSD Software | Smart OSD Software | | | | |
| Physical | Construction Material | Aluminum front frame and sheet metal rear cover | | | | |
| | Mounting | Panel Mount/ Rack Mount 75 x 75 VESA Mount | | Panel Mount/ Rack Mount/ 100 x 100 VESA Mount | | |
| | Enclosure Color | Black C | | | | |
| | Dimensions (mm) | 191.8 x 154.36 x 42.88 | 222.2 x 182.2 x 42.7 | 262.2 x 322.2 x 40.5 | 303 x 378.5 x 43.2 | 400.1 x 253.3 x 52.9 |
| | Cutout Dimensions (mm) | 180 x 140 | 206 x 154 | 244.8 x 304.8 | 285.6 x 361.1 | 379.1 x 232.3 |
| | Weight (kg) Net/ Gross | 1.1 / 2.6 | 1.33 / 4.5 | 2.7 / 4.9 | 3.5 / 5.5 | 4 / 6.5 |
| Environment | Operating Temperature (with air flow) | -20°C ~ 60°C (with air flow) | | | | |
| | Storage Temperature | -20°C ~ 70°C | | | | |
| | Humidity | 10% to 95% (non-condensing) | | | | |
| | IP Level | IP 65 compliant front panel | | | | |
| | Safety and EMC | CE & FCC certified | | | | |
| Power Input | | 12V DC | | 9V~36V DC | | |
| Power consumption | | 12V @ 0.5A | 12V @ 0.5A | 9V @ 2.2A 36V @ 0.5A | 9V @ 1.6A 36V @ 0.4A | 9V @ 1.3 36V @ 0.33 |

Heavy Industrial Monitor

17"~23.8" DM-F IP65 Industrial Monitor

Features

- Robust IP65 aluminum front bezel
- Aesthetic ultra-thin bezel for seamless panel mount installation
- Wide range 9V~36V DC input
- HDMI / DisplayPort / VGA flexible video input solution
- Projected capacitive multi-touch and resistive single touch options
- Wide temperature support



Specifications

Preliminary

| Model | | DM-F17A | DM-FW19A | DM-F19A | DM-F22A | DM-F24A |
|--------------------------|---------------------------------------|---|------------------------------|-------------------------|--|---|
| LCD | LCD Display | 17" (5:4) | 18.5" (16:9) | 19" (5:4) | 21.5" (16:9) | 23.8" (16:9) |
| | Max. Resolution | 1280 (W) x 1024 (H) | 1336 (W) x 768 (H) | 1280 (W) x 1024 (H) | 1920 (W) x 1080 (H) | 1920 (W) x 1080 (H) |
| | Brightness (cd/m ²) | 350 | 400 | 350 | 250 | 250 |
| | Contrast Ratio | 1000 : 1 | 1000 : 1 | 1000 : 1 | 1000 : 1 | 3000 : 1 |
| | LCD Color | 16.7M | | | | |
| | Pixel Pitch (mm) | 0.26 x 0.26 | 0.3 x 0.3 | 0.294 x 0.294 | 0.25 x 0.25 | 0.28 x 0.28 |
| | Viewing Angle (H-V) | 170° / 160° | | | 170° / 160° | 178° / 178° |
| | Backlight MTBF (Hrs) | 50000 | | | 30000 | 30000 |
| Touchscreen & Controller | | 5-wire resistive single touch window/ Penmount 6000 2-point projected capacitive touch window/ EETI EXC3000 | | | 2-point projected capacitive touch window/ EETI EXC7200 | 2-point projected capacitive touch window/ EETI EXC7200 |
| I/O Ports | | 1 x VGA (DB-15) 1 x DVI (F19A only) 1 x HDMI (F17A & FW19A only) 1 x DisplayPort 1.1 1 x USB 2.0 (touch) 1 x RS-232 (reserved for resistive touch ATO) 1 x Lockable 9V-36V DC jack 1 x 9V-36V terminal block | | | 1 x VGA (DB-15) 1 x HDMI 1 x DisplayPort 1.1 1 x USB 2.0 (touch) 1 x RS-232 (reserved for resistive touch ATO) 1 x Lockable 9V-36V DC jack 1 x 9V-36V terminal block | |
| OSD | OSD Button | 7-key membrane OSD keypad | | | | |
| | Smart OSD Software | Smart OSD Software | | | | |
| Construction Material | | Aluminum front frame and sheet metal rear cover | | | | |
| Physical | Mounting | Panel Mount/ Rack Mount/ 100 x 100 VESA Mount | | | Panel Mount / 100 x 100 VESA Mount | Panel Mount / 100 x 100 VESA Mount |
| | Enclosure Color | Black C | | | | |
| | Dimensions (mm) | 341.4 x 408.4 x 49.3 | 468.8 x 288.2 x 48.9 | 372.4 x 447.4 x 49.57 | 358.4 x 550.4 x 49.1 | 382 x 600 x 49.4 |
| | Cutout Dimensions (mm) | 324 x 391 | 447.8 x 267.2 | 430 x 355 | 340 x 532 | 358.6 x 576.6 |
| | Weight (kg) Net/ Gross | 4.4 / 7.1 | 5 / 8.1 | 5.4 / 8.4 | 6.3 / 9.6 | 7.6 / 10.9 |
| Environment | Operating Temperature (with air flow) | -20°C ~ 60°C | -20°C ~ 60°C (with air flow) | -20°C ~ 60°C | -10°C ~ 50°C | -10°C ~ 50°C |
| | Storage Temperature | -20°C ~ 70°C | -20°C ~ 70°C | -20°C ~ 70°C | -20°C ~ 60°C | -20°C ~ 60°C |
| | Humidity | 10% to 95% (non-condensing) | | | | |
| | IP Level | IP 65 compliant front panel | | | | |
| Safety and EMC | | CE & FCC certified | | | | |
| Power input | | 9V~36V DC | | | | |
| Power consumption | | 9V @ 2.6A 36V @ 0.6A | 9V @ 1.33A 36V @ 0.35A | 9V @ 3.3A 36V @ 0.8A | 9V @ 2.5A 36V @ 0.6A | 9V @ 3.4A 36V @ 0.8A |

CPU Cards / Boards / Module

IEI Single Board Computer (SBC) solution provides most flexible and cost-effective solution for industrial computing platform demand. IEI SBC products is applying computing platform from ultimate high-performance solution to cost-effective one. Its onboard chipsets integrated fully Input / Output devices compatibility and flexibility for your working environments.

1. CPU Cards

| | | |
|-------------------------------|---|--|
| PICMG 1.3 Cards | HPCIE / SPCIE / PCIE | Intel® Xeon® / Celeron® / Pentium® / Core™ I |
| PICMG 1.0 Cards | WSB | Intel® Atom™ / Celeron® / Pentium® / Core™ I |
| Half-size PICOe / PCISA / ISA | PICOe / PCISA / IOWA | Intel® Atom™ / Celeron® / Pentium® / Core™ I / AMD |
| Backplanes | SPE / SPXE / PE / HPE PCI / PX / IP / IPX / BP | 2 ~ 19 Slots |



2. Industrial Motherboard

| | | |
|-----------|------|--|
| ATX | IMBA | Intel® Xeon® / Celeron® / Pentium® / Core™ I |
| Micro ATX | IMB | Intel® Xeon® / Celeron® / Pentium® / Core™ I |
| Mini-ITX | KINO | Intel® Atom™ / Celeron® / Pentium® / Core™ I / AMD |



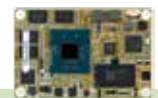
3. Embedded Boards

| | | |
|----------|--------|---|
| EPIC | NANO | Intel® Atom™ / Celeron® / Core™ I / AMD |
| 3.5" | WAFER | Intel® Atom™ / Celeron® / Core™ I / AMD |
| Pico-ITX | HYPER | Intel® Atom™ / Celeron® / Pentium® / RISC |
| PC/104 | PC/104 | Intel® Atom™ / Celeron® / AMD |



4. Computer on Modules

| | | |
|-------------|-----|-----------------------------------|
| COM Express | ICE | Intel® Atom™ / Celeron® / Core™ I |
|-------------|-----|-----------------------------------|



PICMG 1.3 Selection Guide



| Model Name | HPCIE-C236 | HPCIE-Q170 | SPCIE-C236 | SPCIE-C2260-i2 |
|--------------------------------------|--|--|---|--|
| CPU Socket | LGA 1151 | LGA 1151 | LGA1151 | LGA 1150 |
| CPU Type | Intel® Xeon® E3, Core™ i3, Pentium®, Celeron® processor | Intel® Core™ i7/i5/i3, Pentium®, Celeron® processor | Intel® Xeon® E3, Core™ i3, Pentium®, Celeron® processor | Intel® Xeon® E3, Core™ i3, Pentium®, Celeron® processor |
| Chipset | Intel® C236 | Intel® Q170 | Intel® C236 | Intel® C226 |
| Memory | Two 260-pin 1866/2133 MHz dual-channel DDR4 SO-DIMMs (system max. 32 GB) | Two 260-pin 1866/2133 MHz dual-channel DDR4 SO-DIMMs (system max. 32 GB) | Four 288-pin 1866/2133 MHz Dual-Channel DDR4 ECC & non-ECC unbuffered DIMM supported up to 64GB | Four 240-pin 1600/1333 MHz dual-channel DDR3 & DDR3L SDRAM unbuffered DIMMs (system max. 32 GB) |
| Display Interface | Dual display supported 1 x VGA 1 x iDP interface | Dual display supported 1 x VGA 1 x iDP interface | Triple display supported 1 x VGA 1 x iDP interface | Dual display supported 1 x VGA 1 x iDP interface |
| Ethernet | LAN1: Intel® I219-LM with Intel® AMT 11.0 support LAN2: Intel® I211-AT Ethernet controller | LAN1: Intel® I219-LM with Intel® AMT 11.0 support LAN2: Intel® I211-AT Ethernet controller | LAN1: Intel® I219LM Clarkville-V with Intel® AMT 11.0 supported LAN2: Intel® I210 PCIe controller | LAN1: Intel® I217LM with Intel® AMT 9.0 support LAN2: Intel® I210-AT PCIe controller with NCSI support |
| iRIS Remote Management Module | N/A | N/A | 1 x iRIS-2400 slot (Optional) | 1 x iRIS-2400 slot |
| I/O Interface | 1 x 6-pin wafer for KB/MS 2 x RS-232/422/485 2 x USB 3.0 4 x USB 2.0 | 1 x 6-pin wafer for KB/MS 2 x RS-232/422/485 2 x USB 3.0 4 x USB 2.0 | 1 x 6-pin wafer for KB/MS 1 x LPT 2 x RS-232 2 x RS-232/422/485 4 x USB 3.0 7 x USB 2.0 | 1 x 6-pin wafer for KB/MS 1 x LPT 1 x RS-422/485 4 x RS-232 4 x USB 3.0 8 x USB 2.0 |
| Storage Interface | 1 x mSATA (SATA & USB signal) 2 x SATA 6Gb/s (RAID 0/1 supported) | 1 x mSATA (SATA & USB signal) 2 x SATA 6Gb/s (RAID 0/1 supported) | 6 x SATA 6Gb/s (RAID 0/1/5/10 supported) | 6 x SATA 6Gb/s (RAID 0/1/5/10 supported) |
| Audio | Supports by IEI AC-KIT-892HD-R10 audio kit | | | |
| Digital I/O | 8-bit programmable digital I/O | | | |
| Power Consumption | 5V@0.13A, 12V@7.89A, 3.3V@0.10A, 5VSB@0.20A (Intel® Xeon® E3-1275 v5 3.60 GHz with two 16 GB 2133 MHz DDR4 memory) | 5V@0.15A, 12V@8.39A, 3.3V@0.11A, 5VSB@0.21A (Intel® Core™ i7-6700K 4.0GHz with two 16 GB 2133 MHz DDR4 memory) | 5V@3.22A, 12V@6.81A, 3.3V@1.21A, 5VSB@0.18A (Intel® Xeon® E3-1275 v5 3.60 GHz CPU with 64GB (four 16GB) 2133 MHz DDR4 memory) | 5V@3.55A, 12V@0.37A, Vcore_12V@7.61A, 3.3V@1.55A, 5VSB@0.13A (Intel® E3-1240 v3 3.4GHz CPU with 16 GB (four 4GB) 1333 MHz DDR3 memory) |
| Watchdog Timer | Software programmable supports 1~255 sec. system reset | | | |
| Operation Environment | Temperature Range: -20°C ~ 60°C (-4°F ~ 140°F) Relative Humidity: 5% ~ 95%, non-condensing | | | |
| Expansion Slot | N/A | N/A | 1 x Full-size PCIe Mini card slot (support mSATA) | 1 x Full-size PCIe Mini card slot (support mSATA) |
| CPU Cooler | CF-1150SB-R11 CF-1150SC-R20 CF-1150SE-R11 | CF-1150SB-R11 CF-1150SC-R20 CF-1150SE-R11 | CF-1150SB-R11 CF-1150SC-R20 CF-1150SE-R11 | CF-1150SB-R11 CF-1150SC-R20 CF-1150SE-R11 CF-1150SF-R10 |

PICMG 1.3 Selection Guide



| Model Name | SPCIE-C2160 | SPCIE-C2060-R21 | PCIE-Q170 | PCIE-H810 |
|--------------------------------------|--|--|---|---|
| CPU Socket | LGA 1155 | LGA 1155 | LGA1151 | LGA 1150 |
| CPU Type | Intel® Xeon® E3, Core™ i3, Pentium®, Celeron® processor | Intel® Xeon® E3, Core™ i3, Pentium®, Celeron® processor | 6th generation Intel® Core™ i7/i5/i3, Celeron® and Pentium® processor | Intel® Core™ i7/i5/i3, Pentium®, Celeron® processor |
| Chipset | Intel® C216 | Intel® C206 | Intel® Q170 | Intel® H81 |
| Memory | Two 240-pin 1600/1333 MHz dual-channel ECC and non-ECC unbuffered DDR3 SDRAM DIMMs supported (system max. 16 GB) | Two 240-pin 1333/1066 MHz dual-channel ECC and non-ECC unbuffered DDR3 SDRAM DIMMs (system max. 16 GB) | Four 288-pin 1866/2133 MHz dual-channel non-ECC unbuffered DDR4 DIMMs (system max. 64 GB) | Two 240-pin 1600/1333 MHz dual-channel DDR3 & DDR3L SDRAM unbuffered DIMMs (system max. 16 GB) |
| Display Interface | 1 x VGA 1 x DVI-D (via header to IO-KIT-001-R20 DVI-D/USB module) (optional) | 1 x VGA 1 x DVI-D (via header to IO-KIT-001-R20 DVI-D/USB module) (optional) | Triple display supported 1 x VGA 1 x iDP interface | Dual display supported 1 x VGA 1 x iDP interface |
| Ethernet | LAN1: Intel® 82574L PCIe controller LAN2: Intel® 82579 PHY with Intel® AMT 8.0 support | LAN1: Intel® 82574L PCIe controller LAN2: Intel® 82579 PHY with Intel® AMT 7.0 support | LAN1: Intel® I219LM Clarkville-V with Intel® AMT 11.0 supported LAN2: Intel® I210 PCIe controller | LAN1: Realtek RTTL8111E PCIe controller LAN: Realtek RTTL8111E PCIe controller |
| iRIS Remote Management Module | N/A | N/A | 1 x iRIS-2400 slot (optinoal) | N/A |
| I/O Interface | 1 x 6-pin wafer for KB/MS 1 x LPT 1 x RS-422/485 4 x RS-232 8 x USB 2.0 | 1 x 6-pin wafer for KB/MS 1 x LPT 1 x RS-422/485 4 x RS-232 8 x USB 2.0 | 1 x 6-pin wafer for KB/MS 1 x LPT 2 x RS-232 2 x RS-232/422/485 4 x USB 3.0 7 x USB 2.0 | 1 x 6-pin wafer for KB/MS 1 x LPT 1 x RS-422/485 2 x RS-232 2 x USB 3.0 8 x USB 2.0 |
| Storage Interface | 2 x SATA 6Gb/s (RAID 0/1/5/10 supported) 4 x SATA 3Gb/s | 2 x SATA 6Gb/s (RAID 0/1/5/10 supported) 4 x SATA 3Gb/s | 6 x SATA 6Gb/s (RAID 0/1/5/10 supported) | 2 x SATA 3Gb/s 2 x SATA 6Gb/s |
| Audio | Supports by IEI AC-KIT-892HD-R10 audio kit | | | |
| Digital I/O | 8-bit programmable digital I/O | | | |
| Power Consumption | 5V@3.98A, 12V@0.38A, Vcore_12V@7.81A, 3.3V@1.61A, 5VSB@0.15A (3.4GHz Intel® Xeon® 2.2GHz with two 2 GB 1333 MHz DDR3 memory) | 5V@3.98A, 12V@0.38A, Vcore_12V@7.81A, 3.3V@1.61A, 5VSB@0.15A (3.4GHz Intel® Core™ i7-2600K with two 2 GB 1333 MHz DDR3 memory) | 5V@3.12A, 12V@6.85A, 3.3V@1.13A, 5VSB@0.15A (Intel® Core™ i7-6700K 4.0GHz CPU with 64GB (four 16GB) 2133 MHz DDR4 memory) | 5V@3.41A, 12V@0.35A, Vcore_12V@7.52A, 3.3V@1.41A, 5VSB@0.12A (Intel® Core™ i7-4770K 3.90 GHz CPU with 8 GB (two 4 GB) 1333 MHz DDR3 memory) |
| Watchdog Timer | Software programmable supports 1~255 sec. system reset | | | |
| Operation Environment | Temperature Range: -10°C ~ 60°C (14°F ~ 140°F) Relative Humidity: 5% ~ 95%, non-condensing | | Temperature Range: -20°C ~ 60°C (-4°F~140°F) Relative Humidity: 5% ~ 95% non-condensing | |
| Expansion Slot | 1 x Full-size PCIe Mini card slot | 1 x Full-size PCIe Mini card slot | 1 x Full/Half-size PCIe Mini card slot 4 x PCI signal via golden finger | 1 x Full-size PCIe Mini card slot (support mSATA) |
| CPU Cooler | CF-115XA-R10 CF-1156C-R20 CF-1156D-R20 CF-115XE-R10 | CF-115XA-R10 CF-1156C-R20 CF-1156D-R20 CF-115XE-R10 | CF-1150SB-R11 CF-1150SC-R20 CF-1150SE-R11 | CF-1150SB-R11 CF-1150SC-R20 CF-1150SE-R11 CF-1150SF-R10 |

PICMG 1.3 / PICMG 1.0 Selection Guide

New**New**

| Model Name | PCIE-Q870-I2 | PCIE-Q370 |
|--------------------------------------|---|--|
| CPU Socket | LGA 1150 | LGA 1151 |
| CPU Type | Intel® Core™ i7/i5/i3, Pentium®, Celeron® processor | Intel® Core™ i7/i5/i3, Pentium®, Celeron® processor |
| Chipset | Intel® Q87 | Intel® Q370 |
| Memory | Four 240-pin 1600/1333 MHz dual-channel DDR3 & DDR3L SDRAM unbuffered DIMMs (system max. 32 GB) | Four 288-pin 2666MHz dual-channel DDR4 SDRAM unbuffered DIMMs support up to 64GB |
| Display Interface | Dual display supported 1 x VGA 1 x iDP interface | 1 x VGA (up to 1920x1200@60Hz) |
| Ethernet | LAN1: Intel® I217LM with Intel® AMT 9.0 support LAN2: Intel® I210-AT PCIe controller with NCSI support | LAN1: Intel® I219LM PHY LAN2: Intel® I211-AT PCIe controller (Co-lay I210-AT) |
| iRIS Remote Management Module | 1 x iRIS-2400 slot | NV |
| I/O Interface | 1 x 6-pin wafer for KB/MS 1 x LPT 1 x RS-422/485 4 x RS-232 4 x USB 3.0 8 x USB 2.0 | 1 x KB/MS (1x6 pin) 1 x RS-422/485 (1x4 pin, P=2.0) 3 x RS-232 (2x5 pin, P=2.54) 6 x USB 2.0 (2x4 pin, P=2.54) 1 x USB 2.0 (Type A 180°) 2 x USB 3.0 (2x10 pin) 2 x USB 3.0 (Rear IO type A) |
| Storage Interface | 6 x SATA 6Gb/s (RAID 0, 1, 5, 10 supported) | 6 x SATA 6Gb/s (RAID 0/1/5/10 supported) |
| Audio | AC-KIT-892HD-R10 7.1-channel HD Audio kit | |
| Digital I/O | 8-bit programmable digital I/O | |
| Power Consumption | 5V@3.55A, 12V@0.37A, Vcore_12V@7.61A, 3.3V@1.55A, 5VSB@0.13A (3.4GHz Intel® Qual CoreCPU with four GB 1333 MHz DDR3 memory) | TBD |
| Watchdog Timer | Software programmable supports 1~255 sec. system reset | |
| Operation Environment | Temperature Range: -20°C ~ 60°C (-4°F ~ 140°F) Relative Humidity: 5% ~ 95%, non-condensing | |
| Expansion Slot | 1 x Full-size PCIe Mini card slot | 1 x M.2 M key 1 x PCIe x16 & 4 x PCIe x1 signal via golden finger 4 x PCI signal via golden finger |
| CPU Cooler | CF-1150SB-R11 CF-1150SC-R20 CF-1150SE-R11 CF-1150SF-R10 | CF-1150SA-R10 CF-1150SB-R11 CF-1150SC-R20 CF-1150SE-R11 CF-1150SF-R10 |

| Model Name | WSB-BT | WSB-H810 |
|------------------------------|--|---|
| CPU Socket | On board | LGA 1150 |
| CPU Type | Intel® Celeron® J1900 on-board SoC (2GHz, quad-core, 2MB cache, TDP=10W) Intel® Celeron® N2807 on-board SoC (1.58GHz, dual-core, 2MB cache, TDP=4.3W) | Intel® Core™ i7/i5/i3, Pentium®, Celeron® processor |
| Chipset | N/A | Intel® H81 |
| Memory | One 204-pin 1066/1333 MHz single-channel DDR3L SDRAM unbuffered DIMM (system max. 8 GB) | Two 240-pin 1600/1333 MHz dual-channel DDR3 & DDR3L SDRAM unbuffered DIMMs (system max. 16 GB) |
| Display Interface | Dual display supported 1 x VGA 1 x 18/24-bit dual-channel LVDS 1 x iDP interface for HDMI, LVDS, VGA, DVI, DP | Dual display supported 1 x VGA 1 x iDP interface |
| Ethernet | LAN1: Intel® I211-AT PCIe controller LAN2: Intel® I211-AT PCIe controller | LAN1: Intel® I217-V LAN PHY LAN2: Intel® I211-AT Ethernet controller |
| I/O Interface | 1 x KB/MS 1 x LPT 2 x RS-232/422/485 4 x RS-232 1 x USB 3.0 6 x USB 2.0 | 1 x 6-pin wafer for KB/MS 1 x LPT 1 x RS-422/485 2 x USB 3.0 4 x RS-232 8 x USB 2.0 |
| Storage Interface | 1 x mSATA (colay SATA2, supports SATA 3Gb/s signal only) 1 x CF Type II 2 x SATA 3Gb/s | 1 x SATA 3Gb/s 2 x SATA 6Gb/s |
| Audio | IEI AC-KIT-892HD-R10 7.1-channel HD Audio kit via the on-board 10-pin header | |
| Digital I/O | 8-bit digital I/O | |
| Power Consumption | TBD | 5V@3.41A, 12V@0.35A, Vcore_12V@7.52A, 3.3V@1.41A, 5VSB@0.12A (Intel® Core™ i7-4770K 3.90 GHz CPU with 8 GB (two 4 GB) 1333 MHz DDR3 memory) |
| Watchdog Timer | Software programmable and supports 1~255 sec. system reset | |
| Operation Environment | Temperature Range: -20°C ~ 60°C (-4°F ~ 140°F) Relative Humidity: 5% ~ 95%, non-condensing | |
| Expansion Slot | 1 x Full/Half-size PCIe Mini card slot (support mSATA) | 1 x Full/Half-size PCIe Mini card slot (support mSATA) |
| CPU Cooler | Heatsink | CF-1150SB-R11 CF-1150SC-R20 CF-1150SE-R11 CF-1150SF-R10 |

Half-size PCISA, ISA Selection Guide



| Model Name | PCISA-BT | IOWA-LX |
|------------------------------|---|---|
| CPU Socket | On board | On board |
| CPU Type | Intel® Atom™ E3845 on-board SoC (1.91GHz, quad-core, 2MB cache, TDP=10W) Intel® Atom™ E3825 on-board SoC (1.33GHz, dual-core, 1MB cache, TDP=6W) | AMD Geode™ LX600 |
| Chipset | N/A | AMD Geode™ CS5536 |
| Memory | One 204-pin 1066/1333 MHz single-channel DDR3L SDRAM unbuffered DIMM (system max. 8 GB) | On-board 128MB 200/266 MHz DDR SDRAM One 200-pin 200/266 MHz DDR SO-DIMM (system max. 512MB) |
| Display Interface | Dual display supported 1 x VGA 1 x iDP interface | 1 x VGA |
| Ethernet | LAN1: Intel® I211-AT PCIe controller LAN2: Intel® I211-AT PCIe controller | 10/100Mbps Realtek RTL8100C Ethernet controller |
| I/O Interface | 1 x 6-pin wafer for KB/MS 1 x LPT 1 x RS-422/485 2 x RS-232 2 x USB 3.0 8 x USB 2.0 | 1 x Infrared interface 1 x LPT 1 x PS/2 KB/MS 1 x RS-422/485 2 x RS-232 4 x USB 2.0 (by pin header) |
| Storage Interface | 1 x mSATA (colay SATA2, supports SATA 3Gb/s signal only) 2 x SATA 3Gb/s | 1 x CF Type II 1 x FDD 1 x IDE 2 x SATA (RAID 0, 1) |
| Audio | KIT-892HD-R10 7.1-channel HD Audio | Realtek ALC203 with AC'97 codec |
| Digital I/O | 8-bit digital I/O | |
| Power Consumption | 5V@1.55A, 12V@0.74A (Intel® Atom™ E3845 1.91GHz CPU, one 8 GB 1600 MHz memory) | 5V@1.51A, 5VSb@0.09A (On-board AMD Geode™ LX600 CPU 366 MHz with on-board 128MB 200 MHz DDR memory and 512MB 333 MHz DDR memory) |
| Watchdog Timer | Software programmable and supports 1~255 sec. system reset | |
| Operation Environment | Temperature Range: -20°C ~ 60°C (-4°F ~ 140°F) Relative Humidity: 5% ~ 95%, non-condensing | Temperature Range: 0°C ~ 60°C (32°F ~ 140°F) Relative Humidity: 5% ~ 95%, non-condensing |
| Expansion Slot | 1 x PCIe Mini slot | NA |
| CPU Cooler | NA | Heatsink (fanless) |

PICMG 1.3 Backplane

Selection Guide

 PAC series wall-mount chassis

 4U rack-mount chassis

| Backplane | | SPE-4S | SPE-6S | SPE-9S | SPXE-11S | SPXE-14S |
|-----------|-------|-------------------|--------------|-------------------|-------------------|-------------------|
| Total | Slot | 4 | 6 | 7 | 11 | 14 |
| PCIe | x16 | | | | | |
| | x8 | 2 (x16 connector) | | 1 (x16 connector) | | 1 (x16 connector) |
| | x4 | 1 | 5 | 3 | 6 (x16 connector) | |
| | x1 | | | | | 12 |
| | PCI-X | | | | | |
| | PCI | | | 3 | 4 | |
| PSU Type | | 24+4-pin ATX | 24+4-pin ATX | 24+4-pin ATX | 24+8-pin ATX | 24+8-pin ATX |

PICMG 1.3 Passive Backplane

Selection Guide

 PAC series wall-mount chassis

 4U/5U rack-mount chassis

 1U/2U rack-mount chassis

| PICMG 1.3 (PCIe+PCI) | | Model | PE-2SD1 | PE-2SD2 | PE-4S | PE-4S2 | PE-5S | PE-5S2 | PE-6S | PE-6S2 | PE-6SD | PE-6SD3 |
|------------------------------|-------------|-------|--------------|--------------|--------------|--------------|--------------|--------------|--------------|--------------|--------------|--------------|
| Total Slot | | | 2 | 2 | 4 | 4 | 5 | 5 | 6 | 6 | 5 | 5 |
| Expansion Slots | PCIe Slots | x16 * | 1 | | 1 | 1 | 1 | 1 | 1 | 1 | 1 | 1 |
| | | x4 | | | 1 | | 1 | | | 1 | | 1 |
| | | x1 | | | | | | 3 | 2 | | 3 | |
| | PCI-X Slots | | | | | | | | | | | |
| | PCI Slots | | 1 | | 2 | 2 | | | 2 | 3 | | 2 |
| USB Connectors by Pin Header | | | 4 | 4 | 4 | 4 | 4 | 4 | 4 | 4 | 4 | 4 |
| PSU Type | | | 24+4-pin ATX | 24+4-pin ATX | 24+4-pin ATX | 24+4-pin ATX | 24+4-pin ATX | 24+4-pin ATX | 24+4-pin ATX | 24+4-pin ATX | 24+4-pin ATX | 24+4-pin ATX |
| Note | | | 1U Type | 1U Type | | | | | | | 2U Type | 2U Type |

| PICMG 1.3 (PCIe+PCI) | | Model | PE-7S | PE-7S2 | PE-8S | PE-9S | PE-10S | PE-10S2 | PE-13SD | PXE-9S2 | PXE-12S | PXE-13S | PXE-19S2 |
|------------------------------|-------------|-------|--------------|--------------|--------------|--------------|--------------|--------------|-----------------------|-------------------------------|--------------------------------|--------------|------------------------------|
| Total Slot | | | 7 | 7 | 8 | 9 | 10 | 10 | 13 | 9 | 12 | 13 | 19 |
| Expansion Slots | PCIe Slots | x16 * | 1 | 1 | 1 | 1 | 1 | 1 | 1/1 | 1 | 1 | 1 | 1 |
| | | x4 | | | | | | | 1/0 | 3 | | | |
| | | x1 | 2 | 4 | 3 | 4 | 4 | 4 | 0/4 | 0 | | 3 | 1 |
| | PCI-X Slots | | | | | | | | | 0 | 4 | | |
| | PCI Slots | | 3 | 1 | 3 | 3 | 4 | 4 | 2/2 | 4 | 4 | 8 | 16 |
| USB Connectors by Pin Header | | | 4 | 4 | 4 | 4 | 4 | 4 | 8 | 4 | 4 | 4 | 4 |
| PSU Type | | | 24+4-pin ATX | 24+4-pin ATX | 24+4-pin ATX | 24+4-pin ATX | 24+4-pin ATX | 24+4-pin ATX | Dual 24+4-pin ATX | 24+4-pin ATX | 24+4-pin ATX | 24+4-pin ATX | 24+4-pin ATX |
| Note | | | | | | | | | Dual System Backplane | PCIe to PCIe Switch Backplane | PCIe to PCI-X Bridge Backplane | | PCIe to PCI Bridge Backplane |

PICMG 1.3 Passive Backplane for Half-Size CPU Card

Selection Guide

 PAC series wall-mount chassis

 4U rack-mount chassis

| PICMG 1.3 (PCIe+PCI) | | Model | HPXE2-5S1 | HPXE2-6S1 | HPXE2-7S1 | HPXE2-8S1 |
|----------------------|----------|-------|--------------|--------------|--------------|--------------|
| Total Slot | | | 5 | 6 | 7 | 8 |
| Expansion Slots | PCIe x16 | | 1 | 1 | | |
| | PCIe x8 | | | | 2 | 2 |
| | PCIe x4 | | | | | |
| | PCIe x1 | | | | | |
| | PCI-X | | | | | |
| | PCI | | 2 | 3 | 3 | 4 |
| PSU Type | | | 24+4-pin ATX | 24+4-pin ATX | 24+4-pin ATX | 24+4-pin ATX |
| Note | | | ATX power | ATX power | ATX power | ATX power |

PICMG 1.0 Backplane

Selection Guide

PAC series wall-mount chassis
 4U/5U rack-mount chassis
 1U/2U rack-mount chassis

| Model | PCI-4S-RS-R40 | PCI-5S-RS-R40 | PCI-5S2A-RS-R40 PCI-5S2-RS-R40 | PCI-6S-RS-R40 | PCI-7S-RS-R41 | PCI-8S-RS-R40 |
|------------|---------------|---------------|-----------------------------------|---------------|---------------|---------------|
| Total Slot | 4 | 5 | 5 | 6 | 7 | 8 |
| PCI Slot | 3 | 3 | 4 | 4 | 4 | 4 |
| ISA Slot | 1 | 2 | 1 | 2 | 3 | 4 |
| PSU Type | ATX/AT | ATX/AT | ATX/AT | ATX/AT | ATX/AT | ATX/AT |

| Model | PCI-10S-RS-R41 | PCI-10S2-RS-R41 | PX-10S-RS-R50 | PCI-12S-RS-R40 | PCI-13SD-RS-R40 | PCI-14S-RS-R40 |
|------------|----------------|-----------------|---------------|----------------|-----------------|----------------|
| Total Slot | 10 | 10 | 10 | 12 | 13 | 14 |
| PCI Slot | 4 | 4 | 7 | 4 | 3+4 | 4 |
| ISA Slot | 5 | 5 | 3 | 7 | 3+3 | 9 |
| PSU Type | ATX/AT | ATX/AT | ATX/AT | ATX/AT | ATX/AT | ATX/AT |
| Note | | | | | For Dual System | |

| Model | PCI-14S2-RS-R40 | PCI-14S3-RS-R40 | PX-14S3-RS-R50 | PX-14S5-RS-R50 |
|------------|-----------------|-----------------|----------------|----------------|
| Total Slot | 14 | 14 | 14 | 14 |
| PCI Slot | 4 | 4 | 12 | 7 |
| ISA Slot | 8 | 9 | 2 | 6 |
| PSU Type | ATX/AT | ATX/AT | ATX/AT | ATX/AT |

| Model | PCI-2SD2-RS-R41 | PCI-5SD6-RS-R40 | PCI-5SDA-RS-R40 | PCI-6SD-RS-R40/PCI-6SR-RS-R30 |
|------------|-----------------|-----------------|-----------------|-------------------------------|
| Total Slot | 2 | 6 | 6 | 6 |
| PCI Slot | R2 | L2+R2 | L2+R2 | L1+R1 |
| ISA Slot | | | | L1+R1 |
| PSU Type | ATX/AT | ATX | ATX/AT | ATX |

PCISA Backplane

Selection Guide

PAC series wall-mount chassis
 4U rack-mount chassis

| Model | IP-3S-RS | IP-3SA-RS | IP-4S-RS | IP-4S2-RS | IP-4S2A-RS | IP-4S4-RS |
|------------|----------|-----------|----------|-----------|------------|-----------|
| Total Slot | 3 | 3 | 4 | 4 | 4 | 4 |
| PCI Slot | 2 | 2 | 3 | 2 | 3 | |
| ISA Slot | | | | 1 | | 3 |
| PSU Type | AT | ATX | AT | AT | ATX | AT |

| Model | IP-5S2-RS | IP-5SA-RS | IP-5SA2-RS | IP-6S-RS | IP-6SA-RS | IP-7SA-RS |
|------------|-----------|-----------|------------|----------|-----------|-----------|
| Total Slot | 5 | 5 | 5 | 6 | 6 | 7 |
| PCI Slot | 4 | 3 | 4 | 3 | 3 | 4 |
| ISA Slot | | 1 | | 2 | 2 | 2 |
| PSU Type | AT | ATX | ATX | AT | ATX | ATX |

| Model | IP-8S-RS | IPX-9S-RS | IP-10S-RS | IPX-13S-RS |
|------------|----------|-----------|-----------|------------|
| Total Slot | 8 | 9 | 10 | 13 |
| PCI Slot | 4 | 8 | 4 | 12 |
| ISA Slot | 3 | | 5 | |
| PSU Type | ATX/AT | ATX/AT | ATX/AT | ATX/AT |

ISA Backplane

Selection Guide

PAC series wall-mount chassis
 4U rack-mount chassis

| Model | BP-3S-RS-R40 | BP-4S-RS-R40 | BP-5S-RS-R40 | BP-6S-RS-R40 | BP-7S-RS-R40 | BP-8S-RS-R41 | BP-10S-RS-R40 |
|------------|--------------|--------------|--------------|--------------|--------------|--------------|---------------|
| Total Slot | 3 | 4 | 5 | 6 | 7 | 8 | 10 |
| ISA Slot | 3 | 4 | 5 | 6 | 7 | 8 | 10 |
| PSU Type | AT | AT | AT | AT | AT | AT | AT |

Industrial Motherboard Selection Guide



| Model Name | IMBA-H110 | IMBA-BDE | IMBA-H810 | IMBA-C2260-i2-R11 | IMBA-Q870-i2 |
|--------------------------------------|--|---|--|--|--|
| CPU Socket | LGA1151 | On board | LGA1150 | LGA1150 | LGA1150 |
| CPU Type | 6th generation Intel® Core™ i7/i5/i3, Celeron® and Pentium® processor | Intel® Xeon processor D-1500 product family | 4th generation Intel® Core™ i7/i5/i3 Pentium® and Celeron® processor | Intel® Xeon® E3, Core™ i3, Pentium®, Celeron® processor | Intel® Core™ i7/i5/i3, Pentium®, Celeron® processor |
| Chipset | Intel® H110 | Intel® Xeon processor D-1500 product family | Intel®H81 | Intel® C226 | Intel® Q87 |
| Memory | Two 288-pin 2133 MHz dual-channel DDR4 SDRAM unbuffered DIMMs (system Max. 64 GB) | Four 288-pin 2133 MHz dual-channel DDR4 SDRAM unbuffered DIMMs (system max. 128 GB) | Two 240-pin 1333/1600 MHz dual-channel DDR3 SDRAM unbuffered DIMM (system max. 16 GB) | Four 240-pin 1600/1333 MHz dual-channel DDR3 & DDR3L SDRAM ECC and non-ECC unbuffered DIMMs (system max. 32 GB) | Four 240-pin 1600/1333 MHz dual-channel DDR3 & DDR3L SDRAM unbuffered DIMMs (system max. 32 GB) |
| Display Interface | Dual independent display support 1 x DVI-I 1 x HDMI 1 x iDP interface | VGA via AST2510 | Dual independent display support 1 x DVI-D 1 x VGA 1 x iDP interface | Dual display supported 1 x VGA 1 x iDP interface | Triple display supported 1 x VGA 1 x DVI-D 1 x HDMI 1 x iDP interface |
| Ethernet | LAN1: Intel® I219V PHY LAN2: Intel® I211 PCIe Controller | LAN1: Intel® I211-AT PCIe controller LAN2: Intel® I210-AT PCIe controller LAN3&4: Inphi CS4227 PHY (optional) | LAN1: Intel® I217-LM with Intel® AMT 9.0 support LAN2: Intel® I211-AT PCIe controller | LAN1: Intel® I217LM with Intel® AMT 9.0 support LAN2: Intel® I210-AT PCIe controller with NCSI support | LAN1: Intel® I217LM with Intel® AMT 9.0 support LAN2: Intel® I210-AT PCIe controller with NCSI support |
| iRIS Remote Management Module | N/A | N/A | N/A | 1 x iRIS-2400 slot | 1 x iRIS-2400 slot |
| I/O Interface | 1 x KB/MS 1 x LPT 2 x RS-232/422/485 4 x RS-232 4 x USB 3.0 5 x USB 2.0 | 1 x PS/2 for KM/MS 1 x RS-232/422/485 1 x USB 2.0 Type A 4 x USB 3.0 5 x RS-232 6 x USB 2.0 | 1 x IR 1 x PS/2 for KB/MS 1 x RS-232/422/485 1 x USB 2.0 Type A 2 x USB 3.0 5 x RS-232 6 x USB 2.0 | 1 x LPT 1 x PS/2 for KB/MS 1 x RS-422/485 4 x USB 3.0 5 x RS-232 8 x USB 2.0 | 1 x LPT 1 x PS/2 for KB/MS 1 x RS-422/485 4 x USB 3.0 5 x RS-232 8 x USB 2.0 |
| Storage Interface | 4 x SATA 6Gb/s | 6 x SATA 6Gb/s | 2 x SATA 3Gb/s 2 x SATA 6Gb/s | 6 x SATA 6Gb/s (RAID 0/1/5/10 supported) 1 x mSATA (colay SATA port 6) (support SATA 6Gb/s signal only) | 6 x SATA 6Gb/s (RAID 0/1/5/10 supported) 1 x mSATA (colay SATA port 6) (support SATA 6Gb/s signal only) |
| Audio | Realtek ALC662 HD Audio codec | | | | |
| Digital I/O | 8-bit programmable I/O (8-bit GPIO is for programming I/O) | | | | |
| Power Consumption | 3.3V@1.53A, 5V@2.95A, 12V@8.38A, 5VSB@3.2A (Intel® Core™ i7 6700K 4.0GHz CPU with 16GB (two 8GB) 2133 MHz DDR4 memory) | 3.3V@0.11A, 5V@2.83A, 12V@3.97A (Intel® Xeon D-1548 2.0GHz CPU with 32GB (four 4 GB) 2133MHz DDR4 memory) | 3.3V@0.83A, 5V@2.2A, 12V@3.88A, 5VSB@0.3A (Intel® Core™ i7-4770K 3.90 GHz CPU with 8 GB (two 4 GB) 1333 MHz DDR3 memory) | 3.3V@0.57A, 5V@4.50A, 12V@0.14A, Vcore_12V@5.20A, 5VSB@0.19A (Intel® E3-1240 v3 3.4GHz CPU with 16 GB (four 4 GB) 1333 MHz DDR3 memory) | 3.3V@0.66A, 5V@4.34A, 12V@0.16A, Vcore_12V@4.01A, 5VSB@0.21A (Intel® Core™ i7-4770K 3.90 GHz CPU with four 1333 MHz 4 GB DDR3 DDR3 memory) |
| Watchdog Timer | Software programmable and supports 1~255 sec. system reset | | | | |
| Operation Environment | Temperature Range: -20°C ~ 60°C (-4°F ~ 140°F) Relative Humidity: 5% ~ 95%, non-condensing | Temperature Range: 0°C ~ 60°C (32°F ~ 140°F) Relative Humidity: 10% ~ 95%, non-condensing | Temperature Range: -20°C ~ 60°C (-4°F ~ 140°F) Relative Humidity: 5% ~ 95%, non-condensing | Temperature Range: -10°C ~ 60°C (14°F ~ 140°F) Relative Humidity: 5% ~ 95%, non-condensing | |
| Expansion Slot | 1 x Full-size PCIe Mini card slot (support mSATA) 1 x PCIe x16 slot (Gen3) 6 x PCI slot | 1 x M.2 connector (M key) 1 x PCIe x4 slot (for 10GbE LAN card only) 5 x PCIe x4 Gen3 1 x PCIe x4 Gen2 | 1 x PCIe x16 2 x PCIe x1 4 x PCI 1 x PCIe Mini (support mSATA) | 1 x PCIe x16 slot, 3 x PCIe x4 slot Default setting: 1 x PCIe x8, 2 x PCIe x4 Optional setting: 1 x PCIe x16 by BIOS setting 1 x PCIe x1 slot 2 x PCI slot | 1 x PCIe x16 slot (Gen 3) 1 x PCIe x4 slot 1 x PCIe x1 slot 4 x PCI slots |
| CPU Cooler | CF-115XA-R10 CF-1156C-R20 CF-1156D-R20 CF-115XE-R10 | XCF-989A-RS-R12 | CF-115XA-R10 CF-115XE-R10 | CF-115XA-R10 CF-115XE-R10 | CF-115XA-R10 CF-115XE-R10 |

Industrial Motherboard Selection Guide

New

| Model Name | IMBA-Q370 | IMBA-C2360-i2 | IMBA-Q170-i2 |
|--------------------------------------|---|--|--|
| CPU Socket | LGA1151 | LGA1151 | LGA1151 |
| CPU Type | 8th generation Intel® Core™ i7/i5/i3 Pentium® and Celeron® processor | Intel® Xeon® E3, Core™ i3, Pentium®, Celeron® processor | 6th generation Intel® Core™ i7/i5/i3 Pentium® and Celeron® processor |
| Chipset | Intel® Q370 | Intel® C236 | Intel® Q170 |
| Memory | Four 288-pin 2133 MHz dual-channel DDR4 SDRAM unbuffered DIMMs (system Max. 64 GB) | Four 288-pin 2133 MHz dual-channel DDR4 SDRAM unbuffered DIMMs (system Max. 64 GB) | Four 288-pin 2133 MHz dual-channel DDR4 SDRAM unbuffered DIMMs (system Max. 64 GB) |
| Display Interface | Triple independent display support 1 x HDMI 2.0 1 x DVI-I 1 x iDP interface | Triple independent display support 1 x HDMI 2.0 1 x DVI-D 1 x VGA 1 x iDP interface | Triple independent display support 1 x HDMI 2.0 1 x DVI-D 1 x VGA 1 x iDP interface |
| Ethernet | LAN1: Intel® I210-AT PCIe controller with NCSI support LAN2: Intel® I219LM with Intel® AMT 11.0 support | LAN1: Intel® I210-AT PCIe controller with NCSI support LAN2: Intel® I219LM with Intel® AMT 11.0 support | LAN1: Intel® I210-AT PCIe controller with NCSI support LAN2: Intel® I219LM with Intel® AMT 11.0 support |
| iRIS Remote Management Module | N/A | 1 x iRIS-2400 slot | 1 x iRIS-2400 slot |
| I/O Interface | 1 x PS/2 KB/MS 1 x LPT 2 x RS-232/422/485 4 x RS-232 8 x USB 3.0 4 x USB 2.0 | 1 x KB/MS 1 x LPT 2 x RS-232/422/485 4 x RS-232 5 x USB 3.0 7 x USB 2.0 | 1 x KB/MS 1 x LPT 2 x RS-232/422/485 4 x RS-232 5 x USB 3.0 7 x USB 2.0 |
| Storage Interface | 6 x SATA 6Gb/s (RAID 0/1/5/10 supported) | 6 x SATA 6Gb/s (RAID 0/1/5/10 supported) | 6 x SATA 6Gb/s (RAID 0/1/5/10 supported) |
| Audio | Realtek ALC662 HD Audio codec | | |
| Digital I/O | 8-bit programmable digital I/O | | |
| Power Consumption | TBP | 3.3V@1.51A, 5V@3.31A, 12V@9.02A, 5VSB@3.7A (Intel® Xeon® E3-1275 v5 3.60 GHz CPU with 32 GB (four 8GB) 2133 MHz DDR4 memory) | 3.3V@1.65A, 5V@3.4A, 12V@8.58A, 5VSB@3.4A (Intel® Core™ i7 6700K 4.0GHz CPU with 32 GB (Four 8 GB) 2133 MHz DDR4 memory) |
| Watchdog Timer | Software programmable and supports 1~255 sec. system reset | | |
| Operation Environment | Temperature Range: -20°C ~ 60°C (-4°F ~ 140°F) Relative Humidity: 5% ~ 95%, non-condensing | | |
| Expansion Slot | 1 x Full-size PCIe Mini card slot (support mSATA) 1 x M.2 (A key) 1 x M.2 (M Key) 1 x PCIe x16 (Gen3) (share x16 signal with 1 x8 & 1 x4 slot) 1 x PCIe x8 (Gen3) 2 x PCIe x4 (Gen3) 2 x PCI slot | 1 x Full-size PCIe Mini card slot (support mSATA) 2 x PCIe x8 (Gen3) 3 x PCIe x4 (Gen3) 2 x PCI slot | 1 x Full-size PCIe Mini card slot (support mSATA) 2 x PCIe x8 (Gen3) 3 x PCIe x4 (Gen3) 2 x PCI slot |
| CPU Cooler | CF-115XA-R10 CF-1156C-R20 CF-1156D-R20 CF-115XE-R10 | CF-115XA-R10 CF-1156C-R20 CF-1156D-R20 CF-115XE-R10 | CF-115XA-R10 CF-1156C-R20 CF-1156D-R20 CF-115XE-R10 |

Industrial Motherboard Selection Guide



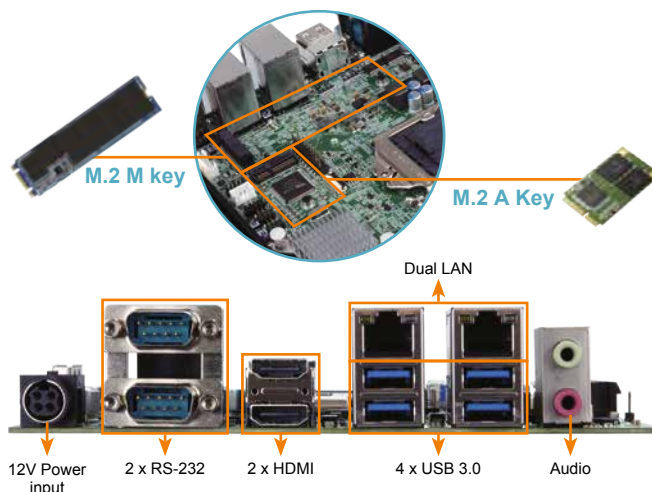
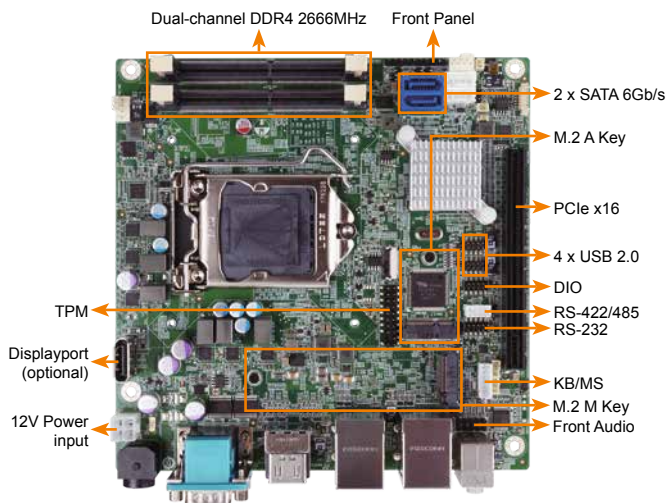
| Model Name | IMBA-C2160 |
|--------------------------------------|---|
| CPU Socket | LGA1155 |
| CPU Type | Intel® Xeon® E3, Core™ i3 processor |
| Chipset | Intel® C216 |
| Memory | Four 240-pin 1600/1333 MHz dual-channel DDR3 SDRAM ECC and non-ECC unbuffered DIMMs supported (system max. 32 GB) |
| Display Interface | Dual display supported 1 x VGA |
| Ethernet | LAN1: Intel® 82579 PHY with Intel® AMT 8.0 support LAN2: Intel® 82574L PCIe controller |
| iRIS Remote Management Module | N/A |
| I/O Interface | 1 x I ² C 1 x LPT 1 x PS/2 for KB/MS 1 x RS-422/485 1 x SMBus 1 x TPM (2x10 pin) 4 x USB 3.0 5 x RS-232 10 x USB 2.0 |
| Storage Interface | 2 x SATA 6Gb/s 4 x SATA 3Gb/s |
| Audio | Realtek ALC662 HD Audio codec |
| Digital I/O | 8-bit programmable I/O (8-bit GPIO is for programming I/O) |
| Power Consumption | 3.3V@1.55A, 5V@3.43A, Vcore@3.12A, 12V@0.20A, 5VSB@0.18A (Intel® Xeon® 2.2GHz CPU with two 1333 MHz 4 GB DDR3 memory) |
| Watchdog Timer | Software programmable |
| Operation Environment | Temperature Range: -10°C ~ 60°C Relative Humidity: 5% ~ 95% |
| Expansion Slot | 2 x PCIe x16 (share 1 PCIe x 16 signal) 2 x PCIe x4 1 x PCIe x1 2 x PCI |
| CPU Cooler | CF-115XA-R10 (for 1U chassis) CF-1156C-R20 CF-1156D-R20 CF-115XE-R10 |

| Model Name | IMB-H110 | IMB-Q870-i2 | IMB-H810-i2-R11 |
|--------------------------------------|--|---|---|
| CPU Socket | LGA1151 | LGA1150 | LGA1150 |
| CPU Type | 6th generation Intel® Core™ i7/i5/i3, Celeron® and Pentium® processor | Intel® Core™ i7/i5/i3, Pentium®, Celeron® processor | Intel® Core™ i7/i5/i3, Pentium®, Celeron® processor |
| Chipset | Intel® H110 | Intel® Q87 | Intel® H81 |
| Memory | Two 288-pin 2133MHz Dual-Channel DDR4 SDRAM Unbuffered DIMM supported up to 64GB | Four 240-pin 1600/1333 MHz dual-channel DDR3 & DDR3L SDRAM unbuffered DIMMs (system max. 32 GB) | Two 240-pin 1600/1333 MHz dual-channel DDR3 & DDR3L SDRAM unbuffered DIMMs (system max. 32 GB) |
| Display Interface | Dual independent display support 1 x VGA 1 x DVI-I 1 x LVDS 1 x iDP | Triple display supported 1 x VGA 1 x DVI-D 1 x HDMI 1 x iDP interface | Triple display supported 1 x VGA1 1 x VGA2 1 x iDP interface |
| Ethernet | Dual LAN: RTL 8111GN controller | LAN1: Intel® I217LM with Intel® AMT 9.0 support LAN2: Intel® I210-AT PCIe controller with NCSI support | LAN1: Intel® I217LM LAN2: Intel® I210-AT PCIe controller with NCSI support |
| iRIS Remote Management Module | N/A | 1 x iRIS-2400 slot | |
| I/O Interface | 1 x KB/MS 1 x LPT 2 x RS-232/422/485 4 x USB 3.0 8 x USB 2.0 10 x RS-232 | 1 x PS/2 for KB/MS 1 x RS-422/485 4 x USB 3.0 5 x RS-232 8 x USB 2.0 | 1 x LPT 1 x PS/2 for KB/MS 1 x RS-422/485 by s/w selection 2 x RS-232 2 x USB 3.0 8 x RS-232 10 x USB 2.0 |
| Storage Interface | 4 x SATA 6Gb/s (RAID 0/1 supported) | 4 x SATA 6Gb/s (RAID 0/1/5/10 supported) | 2 x SATA 6Gb/s 2 x SATA 3Gb/s (AHCI supported) |
| Audio | Realtek ALC662 HD Audio codec | | |
| Digital I/O | 8-bit programmable digital I/O | 8-bit programmable I/O (8-bit GPIO is for programming I/O) | N/A |
| Power Consumption | 3.3V@ 0.93A, 5V@2.99A, 12V@6.88A, 5VSB@0.02A (Intel® Core™ i7-6700K 4.0GHz CPU with 16GB (two 8GB) 2133 MHz DDR4 memory) | 3.3V@0.53A, 5V@4.96A, 12V@0.12A, Vcore_12V@3.95A, 5VSB@0.18A (Intel® Core™ i7-4770K 3.90 GHz CPU with 16 GB four 1333 MHz 4 GB DDR3 memory) | 3.3V@0.64A, 5V@4.20A, 12V@0.14A, Vcore_12V@3.88A, 5VSB@0.20A (Intel® Core™ i7-4770K 3.90 GHz CPU with 8 GB two 1333 MHz 4 GB DDR3 memory) |
| Watchdog Timer | Software programmable and supports 1~255 sec. system reset | | |
| Operation Environment | Temperature Range: -20°C ~ 60°C (-4°F~140°F) Relative Humidity: 5% ~ 95% non-condensing | | |
| Expansion Slot | 1 x PCIe x16 slot (Gen3) 1 x Full-size PCIe Mini card slot 1 x PCIe x1 slot (Gen2) 2 x PCI slot | 1 x PCIe x16 slot (Gen 3) 1 x PCIe x4 slot 1 x PCIe x1 slot 1 x PCI slot | 1 x PCIe x16 slot (Gen 3) 1 x PCIe x1 slot 2 x PCI slot |
| CPU Cooler | CF-115XA-R10 CF-115XE-R10 | CF-115XA-R10 CF-115XE-R10 | |

KINO-DH310

Mini-ITX SBC supports 14nm LGA1151 Intel® 8th Generation Core™ i7/i5/i3, Celeron® and Pentium® processor, DDR4, dual independent displays, dual GbE LAN, M.2, SATA 6Gb/s, HD Audio and RoHS

NEW



Specifications

- ◆ CPU: LGA1151 socket supports 8th generation Intel® Core™ i7/i5/i3, Pentium® or Celeron® processor (35W/65W)
- ◆ Chipset: Intel® H310
- ◆ BIOS: AMI UEFI BIOS
- ◆ Memory: Two 260-pin 2666/2400 MHz Dual-Channel DDR4 SDRAM Unbuffered SO-DIMM slots supported up to 64GB
- ◆ Graphics Engine: Intel® HD Graphics Gen9 Engines with Low power 16 execution unit, supports DX11.3/12, OpenGL 4.3/4.4/4.5 and OpenCL 1.2.0/2.1
- ◆ Display Output: Dual independent display, 2 x HDMI (up to 1920x1080@60Hz), 1 x internal Displayport (up to 4096x2304@60Hz) (optional)
- ◆ Ethernet: LAN1: Realtek RTL8111H PCIe GbE controller, LAN2: Realtek RTL8111H PCIe GbE controller
- ◆ External I/O Interface: 4 x USB 3.0, 2 x RS-232
- ◆ Internal I/O Interface: 1 x KB/MS (1x6 pin), 4 x USB 2.0 (2x4 pin, P=2.0), 1 x RS-422/485 (1x4 pin, P=2.0), 1 x RS-232 (2x5 pin, P=2.0), 2 x SATA 6G/s with 5/12V SATA power connector (No RAID)
- ◆ I²C: 1 x I²C (1x4 pin)
- ◆ TPM: 1 x TPM (2x10 pin)
- ◆ SMBus: 1 x SMBus (1x4 pin)
- ◆ Audio: Realtek ALC662 HD codec, 2 x Audio Jack (Lin-out, Mic-in), 1 x Front audio (2x5 pin)
- ◆ Front Panel: 1 x Front Panel (1x10 pin, Power LED, HDD LED, Power Button, Reset Button)
- ◆ LAN LED: 2 x LAN LED (1x2 pin)
- ◆ Expansion: 1 x PCIe x16 (Gen3/3.1), 1 x M.2 M key (2280, Gen2 PCIe x2 only), 1 x M.2 A Key (2230, Gen2 PCIe x1 & USB 2.0)
- ◆ Digital I/O: 1 x 8-bit digital I/O (2x5 pin)
- ◆ FAN Connector: 2 x Smart fan connector (1x4 pin)
- ◆ Chassis Open: 1 x Chassis intrusion (1x2 pin)
- ◆ Power supply: DC 12V input, 1 x External DC jack (4-pin DIN), 1 x Internal power connector (2x2 pin), Support AT/ATX mode, ErP/EuP Compliant
- ◆ Watchdog Timer: Software Programmable support 1~255 sec. System reset
- ◆ Power Consumption: 12V@11.32A (Intel® Core™ i7-8700 up to 4.60 GHz CPU with two 8GB 2666MHz DDR4 memory)
- ◆ Operating Temperature: 0°C ~ 60°C
- ◆ Storage Temperature: -10°C ~ 70°C
- ◆ Operating Humidity: 5% ~ 95%, non-condensing
- ◆ Dimension: 170mm x 170mm
- ◆ Weight: GW:900g / NW:400g
- ◆ CE/FCC compliant



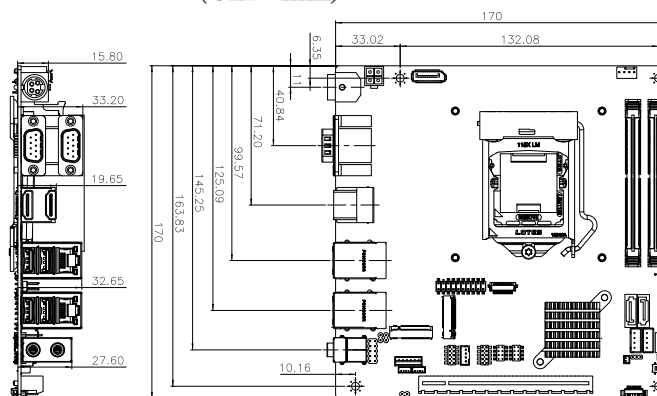
Features

- LGA1151 Intel® 8th Generation Core™ i7/i5/i3, Celeron® and Pentium® processor
- Dual-channel DDR4 2666MHz
- Support DP & Dual HDMI
- Support M.2 A Key for WLAN expansion & M key for storage
- IEI One Key Recovery solution allows you to create rapid OS backup and recovery

Packing List

| | |
|--------------------------------------|----------------|
| 1 x KINO-DH310 single board computer | 1 x SATA cable |
| 1 x I/O Shielding | 1 x QIG |

Dimensions (Unit: mm)



Ordering Information

| Part No. | Description |
|---------------------|---|
| KINO-DH310-R10 | Mini-ITX SBC supports 14nm LGA1151 Intel® 8th Generation Core™ i7/i5/i3, Celeron® and Pentium® processor, DDR4, dual independent displays, dual GbE LAN, M.2, SATA 6Gb/s, HD Audio and RoHS |
| 32000-02300 | PS/2 KB/MS cable, 135mm, P=2.0 |
| 32000-070301-RS | Dual port USB cable, 210mm, P=2.0 |
| 32205-002700-200-RS | RS-232 cable, 200mm, P=2.0 |
| CF-115XA-RS-R10 | High-performance LGA1155/1156 cooler kit, 1U chassis compatible 73W |
| CF-1156C-RS | LGA1155/LGA1156 cooler kit, 1U chassis compatible, 45W |
| CF-1156D-RS | LGA1155/LGA1156 cooler kit, 1U chassis compatible, 65W |
| TPM-IN02-R20 | 20-pin Infineon TPM 2.0 module, software management tool, firmware v5.5 |

Mini-ITX Selection Guide

New**New****New****New**

| Model Name | KINO-DH110 | KINO-DAL | tKINO-AL | gKINO-DMF | tKINO-ULT3 |
|--------------------------------------|--|---|---|--|---|
| CPU Socket | LGA1151 | On Board | On Board | On Board | On Board |
| CPU Type | 6th/7th generation Intel® Core™ i7/i5/i3 Pentium® and Celeron® processor | Intel® Atom™/Celeron®/Pentium® on-board SoC | Intel® Atom™/Celeron®/Pentium® on-board SoC | AMD G-series on board SoC Merlin Falcon | Intel® Core™ i7/i5/i3, Celeron® ULT processor |
| Chipset | Intel® H110 | Intel® Atom™/Celeron®/Pentium® on-board SoC | Intel® Atom™/Celeron®/Pentium® on-board SoC | AMD G-series on board SoC Merlin Falcon | Intel® Core™ i7/i5/i3, Celeron® ULT processor |
| Memory | Two 260-pin 2133 MHz dual-channel DDR4 SDRAM SO-DIMMs (system Max. 64 GB) | 2 x 204-pin 1866/1600 MHz single-channel DDR3L SO-DIMM (system max. 8 GB) | 2 x 204-pin 1866/1600 MHz single-channel DDR3L SO-DIMM (system max. 8 GB) | 2 x SO-DIMM DDR4 2400MHz up to 64GB | 2 x SO-DIMM DDR4 2133MHz, system maximum up to 32GB |
| Display Interface | Dual independent display 1 x DP++ 1 x HDMI 1 x iDP interface | Triple independent display 1 x VGA 1 x HDMI 1 x 18/24-bit dual-channel LVDS | Triple independent display 2 x DP++ 1 x eDP | Triple independent display 1 x HDMI 2.0 1 x HDMI 1.4 1 x DP++ | Triple independent display 1 x HDMI/DP 1 x HDMI 1 x LVDS/eDP |
| Ethernet | LAN1: Intel® I210-AT PCIe controller with NCSI support LAN2: Intel® I219LM with Intel® AMT 11.0 support | Dual LAN: Intel® I210-IT/I211-AT PCIe controller | Dual LAN: RTL8111 | Dual LAN: RTL8111GN | LAN1: Intel® I219LM LAN2: Intel® I211AT |
| iRIS Remote Management Module | N/A | | | | |
| I/O Interface | 1 x KB/MS 1 x RS-232/422/485 2 x RS-232 4 x USB 3.0 4 x USB 2.0 | 1 x PS/2 KB/MS 2 x RS-232/422/485 2 x USB 2.0 4 x RS-232 4 x USB 3.0 | 1 x PS/2 KB/MS 2 x RS-232/422/485 2 x USB 2.0 4 x RS-232 4 x USB 3.0 | 2 x RS-232/422/485 4 x RS-232 (2 support cctalk, TTL) 4 x USB 3.0 5 x USB 2.0 | 2 x RS-232/422/485 4 x RS-232 4 x USB 2.0 4 x USB 3.0 |
| Storage Interface | 2 x SATA 6Gb/s 1 x M.2 (B Key) (2242) (SATA signal) | 2 x SATA 6Gb/s with 12/5V SATA power connector 1 x 8 GB eMMC (optional) 1 x M.2 (B Key) (2242)(SATA port1 + USB 2.0 signal) 1 x Micro SD slot (Optional) | 2 x SATA 6Gb/s with 12/5V SATA power connector 1 x M.2 (B Key) (2242)(SATA port1 + USB 2.0 signal) 1 x Micro SD slot (Optional) | 2 x SATA 6Gb/s with 5V/12V SATA power connector 1 x MicroSD slot 1 x M.2 (B key) (SATA signal) | 2 x SATA 6Gb/s with 5V SATA power connector 1 x eMMC5.0 (up to 32G, optional) |
| Audio | Realtek ALC662 HD Audio codec | | Realtek ALC269 HD Audio codec | Realtek ALC662 HD Audio Codec | |
| Digital I/O | 8-bit programmable digital I/O | | | | |
| Power Consumption | 12V@12.16A (3.4GHz Intel® Core i7-6700 with two 2133MHz 16GB DDR4 memory) | TBD | 12V@2.58A (Intel® Pentium® N4200 CPU with two 8GB 1600MHz DDR3L memory) | 12V@5.54A (AMD RX-421BD 2.1GHz CPU with 2400 MHz 16GB DDR4 memory) | 12V@4.68A (Intel® Core™ i7-6600U up to 3.4GHz CPU with 16GB (8GB x 2) DDR4-2133 memory running in 3.2GHz) |
| Watchdog Timer | Software programmable and supports 1~255 sec. system reset | | | | |
| Operation Environment | Temperature Range: -20°C ~ 60°C (-4°F ~ 140°F) Relative Humidity: 5% ~ 95%, non-condensing | Temperature Range: KINO-DAL: -20°C ~ 70°C (-4°F~158°F) KINO-DALW2: -40°C ~ 85°C (-40°F~185°F) Relative Humidity: 5% ~ 95% non-condensing | Temperature Range: -20°C ~ 70°C (-4°F ~ 158°F) Relative Humidity: 5% ~ 95% non-condensing | Temperature Range: -20°C ~ 60°C (-4°F ~ 140°F) Relative Humidity: 5% ~ 95% non-condensing | |
| Expansion Slot | 1 x Full-size PCIe Mini card slot 1 x PCIe x1 slot | 1 x PCIe x1 slot 1 x Full/Half-size PCIe Mini card slot (w/ SIM holder) | 1 x PCIe x1 slot 1 x Full/Half-size PCIe Mini card slot (w/ SIM holder) | 1 x PCIe x8 slot 1 x Full-size PCIe Mini card slot 1 x MicroSD slot | 1 x PCIe x4 slot 1 x Full-size PCIe Mini card slot (support mSATA, colay with SATA2) 1 x Full-size PCIe Mini card slot (with SIM card slot) |
| CPU Cooler | CF-1156C-R20 CF-1156D-R20 CF-115XE-R10 | Heatsink | Heatsink | Cooler | Heatsink |

Mini-ITX Selection Guide



| Model Name | KINO-DCM236 | KINO-DQM170 | KINO-AQ170 | tKINO-BW | KINO-DBT |
|--------------------------------------|---|---|---|---|---|
| CPU Socket | On Board | On board | LGA1151 | On board | On board |
| CPU Type | Intel® Xeon® E3, Core™ i3, Celeron® process | 6th generation Intel® Core™ i7/ i5/i3 and Celeron® processor | 6th/7th generation Intel® Core™ i7/i5/i3, Pentium® and Celeron® processor | Intel® Pentium®/Celeron® on board SoC | Intel® Atom™/Celeron® on board SoC |
| Chipset | Intel® CM236 | Intel® QM170 | Intel® Q170 | Intel® Pentium®/Celeron® on-board SoC | Intel® Atom™/Celeron® on-board SoC |
| Memory | 2 x SO-DIMM DDR4 2133MHz up to 32GB with ECC support | Two 260-pin 2133 MHz dual-channel DDR4 SDRAM SO-DIMMs (system Max. 64 GB) | Two 260-pin 2133 MHz dual-channel DDR4 SDRAM SO-DIMMs (system Max. 64 GB) | Two 204-pin 1600/1333 MHz dual-channel DDR3L SDRAM SO-DIMMs (support up to 8 GB) | Two 204-pin 1066/1333 MHz dual-channel unbuffered DDR3L SDRAM SO-DIMM support up to 8 GB (J1900, N2930, E3845, E3827, E3826) One 204-pin 1066/1333 MHz dual-channel unbuffered DDR3L SDRAM SO-DIMM supports up to 4 GB (N2807, E3825, E3815) |
| Display Interface | Triple independent display 1 x HDMI 2.0 2 x HDMI 1.4 1 x LVDS | Triple independent display supported 1 x HDMI 2.0 2 x HDMI 1.4 1 x LVDS | Triple independent display supported 1 x HDMI 2.0 1 x HDMI/DP 1 x VGA 1 x iDP interface | Triple independent display supported 1 x HDMI/DP 1 x VGA 1 x 18/24-bit dual-channel LVDS | Dual independent display supported 1 x VGA 1 x DVI-D |
| Ethernet | LAN1: Intel® I219LM LAN2: Intel® I211 | LAN1: Intel® I219-LM with Intel® AMT 11.0 support LAN2: Intel® I211 PCIe controller | LAN1: Intel® I211 PCIe controller LAN2: Intel® I219LM with intel AMT 11.0 support | Dual LAN: Realtek RTL8111G PCIe controller | Dual LAN: Realtek RTL8111G PCIe controller |
| iRIS Remote Management Module | N/A | | | | |
| I/O Interface | 1 x KB/MS 2 x RS-232/422/485 4 x RS-232 4 x USB 2.0 4 x USB 3.0 | 1 x KB/MS 2 x RS-232/422/485 4 x RS-232 4 x USB 2.0 4 x USB 3.0 | 1 x KB/MS 2 x RS-232/422/485 4 x RS-232 4 x USB 3.0 6 x USB 2.0 | 1 x KB/MS 2 x RS-232/422/485 2 x USB 3.0 4 x RS-232 4 x USB 2.0 | 1 x KB/MS 1 x RS-422/485 2 x USB 3.0 4 x USB 2.0 5 x RS-232 |
| Storage Interface | 4 x SATA6Gb/s 1 x mSATA | 4 x SATA 6Gb/s (RAID 0/1/5/10 supported) | 4 x SATA 6Gb/s (RAID 0/1/5/10 supported) | 2 x SATA 6Gb/s 1 x mSATA 1 x Micro SD slot | 2 x SATA 3Gb/s 1 x Micro SD slot (E38xx sku only) |
| Audio | Realtek ALC662 HD Audio codec | | | | |
| Digital I/O | 8-bit programmable digital I/O | 8-bit digital I/O | | | |
| Power Consumption | 12V@6.93A (Intel Xeon E3-1505M V5 2.8GHz CPU with 32 GB (two 16 GB) 2133 MHz DDR4 memory) | 12V@5.08A (Intel® Core™ i7-6820EQ, 3.5GHz CPU with 16 GB (two 8 GB) 2133 MHz DDR4 memory) | 3.3V@1.62A, 5V@3.54A, 12V@8.17A, 5VSB@3.6A (Intel® Core™ i7 6700K 4.0 GHz CPU with 16 GB (two 8 GB) 2133 MHz DDR4 memory) | 12V@1.61A (Intel® Celeron® N3710 CPU with two 4 GB 1600 MHz DDR3L memory) | 12V@1.64A (Intel® Celeron® J1900 CPU with 4 GB 1333 MHz DDR3L memory) |
| Watchdog Timer | Software programmable supports 1~255 sec. system reset | | | | |
| Operation Environment | Temperature Range: -20°C ~ 60°C (-4°F ~ 140°F) Relative Humidity: 5% ~ 95%, non-condensing | | | | |
| Expansion Slot | 1 x PCIe x16 slot 1 x Full-size PCIe Mini card slot (support mSATA) 1 x Half-size PCIe Mini card slot 1 x M.2 2230 (A key) | 1 x PCIe x16 slot 1 x Full-size PCIe Mini card slot (support mSATA) 1 x Half-size PCIe Mini card slot 1 x M.2 2230 (A key) | 1 x PCIe x8 slot 1 x Full-size PCIe Mini card Slot (support mSATA) | 1 x PCIe x1 slot 1 x PCIe Mini card slot | 1 x Full-size PCIe Mini card slot (support mSATA) 1 x PCIe x4 slot (with PCIe x1 signal) |
| CPU Cooler | Heatsink | Heatsink | CF-1156C-R20 CF-1156D-R20 CF-115XE-R10 | Heatsink | Heatsink |

Mini-ITX Selection Guide



| Model Name | KINO-DH810 | eKINO-BT | KINO-DQM871-i1 | KINO-QM770 |
|--------------------------------------|--|---|--|--|
| CPU Socket | LGA1150 | On board | On Board | Socket G2 |
| CPU Type | Intel® Core™ i7/i5/i3, Pentium®, Celeron® processor | Intel® Atom™/Celeron® on-board SoC | Intel® Core™ i7/i5/i3 Mobile processor | Intel® Mobile processor |
| Chipset | Intel® H81 | Intel® Atom™/Celeron® on-board SoC | Intel® QM87 | Intel® QM77 |
| Memory | Two 204-pin 1600/1333 MHz dual-channel DDR3 & DDR3L SDRAM unbuffered DIMMs (system max. 16 GB) | Two 204-pin 1066/1333 MHz dual-channel unbuffered DDR3L SDRAM SO-DIMM support up to 8 GB (J1900, N2930, E3845, E3827, E3826) One 204-pin 1066/1333 MHz dual-channel unbuffered DDR3L SDRAM SO-DIMM supports up to 4 GB (N2807, E3825, E3815) | 2 x 204-pin, Max. 16 GB, 1333/1600 MHz dual-channel DDR3 SO-DIMMs | 2 x 204-pin, Max. 16 GB, 1066/1333/1600 MHz dual-channel DDR3 SO-DIMMs |
| Display Interface | Dual display supported 1 x VGA 1 x DVI-D 1 x iDP interface | Dual display supported 1 x VGA 2 x 18/24-bit dual-channel LVDS | Triple display supported 2 x HDMI 1 x VGA 1 x 18/24-bit dual-channel LVDS 1 x iDP interface | Triple display supported 2 x HDMI 1 x DVI-I 1 x 18/24-bit dual-channel LVDS |
| Ethernet | Dual LAN: Intel® I211-AT PCIe controller | Dual LAN: Realtek RTL8111E PCIe controller | LAN1: Intel® I217LM with Intel® AMT 9.0 support LAN2: Intel® I210-AT PCIe controller | LAN1: Intel® 82579 PHY with Intel® AMT 8.0 support LAN2: Intel® 82583V PCIe controller |
| iRIS Remote Management Module | N/A | N/A | 1 x iRIS-1010 slot | N/A |
| I/O Interface | 1 x PS/2 for KB/MS 1 x RS-422/485 2 x USB 3.0 5 x RS-232 6 x USB 2.0 | 1 x PS/2 for KB/MS 1 x RS-422/485 2 x USB 3.0 4 x RS-232 4 x USB 2.0 | 1 x PS/2 for KB/MS 1 x RS-422/485 1 x SMBus 1 x TPM (2x10 pin) 4 x USB 3.0 5 x RS-232 10 x USB 2.0 | 1 x KB/MS 1 x RS-422/485 1 x SMBus 1 x TPM (2x10 pin) 2 x RS-232 4 x USB 2.0 4 x USB 3.0 |
| Storage Interface | 2 x SATA 6Gb/s | 2 x SATA 3Gb/s | 2 x SATA 6Gb/s 2 x SATA 3Gb/s 1 x mSATA | 2 x SATA 6Gb/s 2 x SATA 3Gb/s |
| Audio | Realtek ALC662 HD Audio codec | | Realtek ALC662 HD Audio codec | Realtek ALC892 HD Audio codec |
| Digital I/O | 8-bit programmable digital I/O | | | |
| Power Consumption | 12V@6.03A (Intel® Core™ i7-4770K 3.90 GHz CPU with two 1333 MHz 4 GB DDR3 memory) | 12V@1.55A (Intel® Celeron® J1900 CPU with two 8 GB 1333 MHz DDR3L memory) | 12V@5.03A (2.0GHz Intel® Core™ i7 processor with two 1333 MHz 4 GB DDR3 memory) | 12V@6.08A (2.3GHz Intel® Core™ i7-3610QE with two 1333 MHz 4 GB DDR3 memory running 3DMark06 burn in) |
| Watchdog Timer | Software programmable and supports 1~255 sec. system reset | | Software programmable and supports 1~255 sec. system reset | |
| Operation Environment | Temperature Range: -20°C ~ 60°C Relative Humidity: 5% ~ 95% non-condensing | | Temperature Range: -10°C ~ 60°C (14°F ~ 140°F) Relative Humidity: 5% ~ 95%, non-condensing | |
| Expansion Slots | 1 x Full-size PCIe Mini card slot 1 x PCIe x1 slot | 1 x Full-size PCIe Mini card slot 1 x PCIe x1 slot | 1 x PCIe x16 slot 1 x Full-size PCIe Mini slot (support mSATA) | 1 x PCIe x16 slot 1 x PCIe Mini card slot (support mSATA) |
| CPU Cooler | CF-115XA-R10 CF-115XE-R10 | Heatsink | XCF-479B-RS CF-989B-RS-R11 | CF-989A-RS-R12 |

EPIC NANO Selection Guide

New



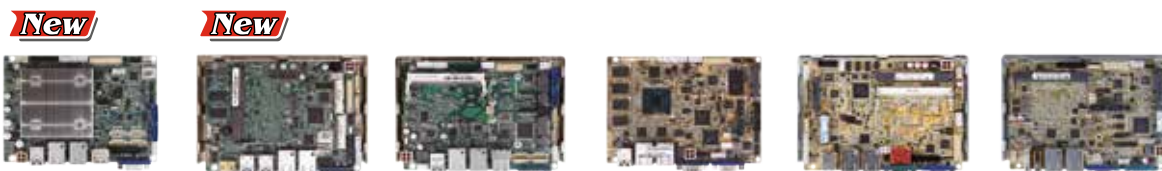
| Model Name | NANO-AL/ALW2 | NANO-ULT3 | NANO-BT-11/BT-W2 | NANO-SE/KBN-11 |
|--------------------------------------|--|--|--|--|
| CPU Socket | On board | On board | On board | On board |
| CPU Type | Intel® Atom™/Celeron®/Pentium® on-board SoC | Intel® Core™ i7/i5/i3, Celeron® ULT processor | Intel® Atom™, Celeron® SoC | AMD® Embedded G-Series SoC |
| Chipset | Intel® Atom™/Celeron®/Pentium® on-board SoC | Intel® Core™ i7/i5/i3, Celeron® ULT processor | Intel® Atom™/Celeron® on-board SoC | AMD® Embedded G-Series SoC |
| Memory | 1 x 204-pin 1866/1600 MHz single-channel DDR3L SO-DIMM (system max. 8 GB) | 2 x 260-pin 2133/1867 MHz dual-channel DDR4 SO-DIMMs (system max. 32 GB) | 1 x 204-pin 1333/1066 MHz single-channel DDR3L SO-DIMM (system max. 8 GB) | 1 x 204-pin 1600/1333 MHz single-channel DDR3 & DDR3L SO-DIMM (system max. 8 GB) |
| Display Interface | Triple independent display 2 x HDMI 1 x 18/24-bit dual-channel LVDS 1 x iDP | Triple independent display 2 x HDMI 1 x 18/24-bit dual-channel LVDS 1 x iDP interface | Dual display supported 1 x VGA 1 x HDMI 1 x 18/24-bit dual-channel LVDS | Dual display supported 1 x VGA 1 x HDMI 1 x 18/24-bit dual-channel LVDS |
| Ethernet | Dual LAN: Intel® I210-IT/I211-AT PCIe controller | LAN1: Intel® I219-LM PHY with Intel® AMT 11.0 supported LAN2: Intel® I211-AT PCIe GbE Controller | LAN1: Intel® I210-AT PCIe controller with NCSI support LAN2: Intel® I211-AT PCIe controller | LAN1: Intel® I210-AT PCIe controller with NCSI support LAN2: Intel® I211-AT PCIe controller |
| iRIS Remote Management Module | N/A | | 1 x iRIS-1010 slot | |
| I/O Interface | 1 x PS/2 KB/MS 2 x RS-232/422/485 2 x USB 2.0 4 x RS-232 4 x USB 3.0 | 1 x PS/2 KB/MS 1 x RS-232/422/485 2 x RS-232 2 x USB 2.0 4 x USB 3.0 | 1 x PS/2 KB/MS 1 x RS-422/485 1 x USB 3.0 3 x RS-232 3 x USB 2.0 | 1 x PS/2 KB/MS 1 x RS-422/485 2 x USB 3.0 5 x RS-232 6 x USB 2.0 |
| Storage Interface | 2 x SATA 6Gb/s with 5V SATA power connector 1 x M.2 (B Key) (SATA only) | 2 x SATA 6Gb/s with 5V SATA power connector 1 x 8 GB eMMC (optional) | 2 x SATA 3Gb/s with 5V SATA power connector | 2 x SATA 6Gb/s with 5V SATA power connector |
| Audio | Realtek ALC662 HD Audio codec | | | Realtek ALC892 HD Audio codec |
| Digital I/O | 8-bit programmable digital I/O | | | |
| Power Consumption | 12V@2.13 A (Intel® Pentium® N4200 CPU with one 8GB 1600MHz DDR3L memory) | 12V@2.48A (Intel® Core™ i3-6100U CPU) | 12V@1.52A (Intel® Atom™ Processor J1900 CPU with one 8 GB 1333 MHz DDR3L memory) | 12V@1.02A (AMD GX-415GA 1.5GHz CPU with 1600 MHz 8 GB DDR3 memory) |
| Watchdog Timer | Software programmable and supports 1~255 sec. system reset | | | |
| Operating Environment | Temperature Range: NANO-AL: -20°C ~ 70°C (-4°F~158°F) NANO-ALW2: -40°C ~ 85°C (-40°F~185°F) Relative Humidity: 5% ~ 95% non-condensing | Temperature Range: -20°C ~ 60°C (-4°F ~ 140°F) Relative Humidity: 5% ~ 95%, non-condensing | Temperature Range: NANO-BT-11: -20°C ~ 60°C (-4°F~140°F) NANO-BT-W2: -40°C ~ 85°C (-40°F~185°F) Relative Humidity: 5% ~ 95% non-condensing | Temperature Range: 0°C ~ 60°C (32°F ~ 140°F) Relative Humidity: 5% ~ 95% non-condensing |
| Expansion Slots | 1 x Full/Half-size PCIe Mini slot (w/ Micro SIM holder) | 1 x Full-size PCIe Mini card slot (with SIM holder & mSATA support) 1 x Half-size PCIe Mini card slot | 1 x Full-size PCIe Mini card slot with mSATA support 1 x PCI-104 slot | 1 x Full-size PCIe Mini card slot with mSATA support |
| CPU Cooler | Heatsink | Heat Spreader | Heatsink | GX-415GA (with heatsink) GX-210HA (with cooler) |

EPIC NANO Selection Guide



| Model Name | NANO-QM871-i1 | NANO-QM770 | NANO-LX-R12 |
|--------------------------------------|--|--|--|
| CPU Socket | On board | Socket G2 | On board |
| CPU Type | Intel® Core™ i7/i5/i3, Celeron® Mobile processor | Intel® Core™ i7/i5/i3, Celeron® Mobile processor | AMD Geode™ LX800 |
| Chipset | Intel® QM87 | Intel® QM77 | AMD Geode™ LX800 + AMD CS5536 |
| Memory | 1 x 204-pin 1600/1333 MHz dual-channel DDR3/DDR3L SO-DIMM (system max. 8 GB) | 1 x 204-pin 1600/1333 MHz single-channel DDR3 SO-DIMM (system max. 8 GB) | 1 x 200-pin 400/333 MHz DDR SO-DIMM (system max. 1GB) |
| Display Interface | Dual display supported 1 x VGA 2 x HDMI 1 x 18/24-bit dual-channel LVDS | Dual display supported 1 x DVI-I 2 x HDMI 1 x 24-bit dual-channel LVDS | Dual display supported 1 x VGA 1 x 18-bit single-channel LVDS 1 x 24-bit TTL (LVDS to TTL) |
| Ethernet | LAN1: Intel® I217-LM PHY with Intel® AMT 9.0 supported LAN2: Intel® I211-AT PCIe GbE controller | LAN1: Intel® 82583V PCIe controller LAN2: Intel® 82579 PHY with Intel® AMT 8.0 supported | 10/100Mbps Realtek RTL8100C |
| iRIS Remote Management Module | 1 x iRIS-1010 slot | N/A | |
| I/O Interface | 1 x PS/2 KB/MS 1 x RS-422/485 2 x RS-232 2 x USB 3.0 4 x USB 2.0 | 1 x I ² C 1 x Infrared 1 x PS/2 KB/MS 1 x RS-422/485 1 x SMBus 1 x TPM connector 2 x RS-232 2 x USB 2.0 4 x USB 3.0 | 1 x Infrared interface 1 x LPT 1 x PS/2 for KB/MS 1 x RS-422/485 4 x USB 2.0 6 x RS-232 |
| Storage Interface | 2 x SATA 6Gb/s with 5V SATA power connector (RAID 0, 1) | 2 x SATA 6Gb/s with 5V SATA power connector (RAID 0, 1) | 2 x SATA 1.5Gb/s (RAID 0, 1) 1 x IDE 1 x CF Type II |
| Audio | Realtek ALC662 HD Audio codec | | Realtek ALC203 with AC'97 codec |
| Digital I/O | 8-bit programmable digital I/O | | |
| Power Consumption | 12V@3.78A (Intel® 4th Gen. 2.0GHz CPU with one 1333MHz DDR3 4 GB memory) | 12V@4.89A (Intel® 1.8GHz CPU with 1333 MHz DDR3 4 GB memory) | 12V@0.92A (AMD LX800, 256 MB 400 MHz DDR) |
| Watchdog Timer | Software programmable and supports 1~255 sec. system reset | | |
| Operation Environment | Temperature Range: -10°C ~ 60°C (14°F ~ 140°F) Relative Humidity: 5% ~ 95% non-condensing | | Temperature Range: 0°C ~ 60°C (32°F ~ 140°F) Relative Humidity: 5% ~ 95% non-condensing |
| Expansion Slots | 1 x Full-size PCIe Mini card slot | 1 x PCIe Mini card slot with mSATA support | 1 x PC/104-Plus |
| CPU Cooler | XCF-479B-RS / CF-989B-RS-R11 | CF-989A-RS-R12 / CF-989B-RS-R11 | Heatsink |

3.5" WAFER Selection Guide



| Model Name | WAFER-AL | WAFER-ULT4/ULT3 | WAFER-BW | WAFER-BTW2 | WAFER-ULT2/ULT-1 | WAFER-BT-1 |
|--------------------------------------|---|---|---|---|---|--|
| CPU Socket | On board | On board | On board | On board | On board | On board |
| CPU Type | Intel® Atom™/Celeron®/Pentium® on-board SoC | Intel® Mobile ULT processor | Intel® Pentium®/Celeron® SoC | Intel® Atom™/Celeron® SoC | Intel® Mobile ULT processor | Intel® Atom™/Celeron® SoC |
| Chipset | Intel® Atom™/Celeron®/Pentium® on-board SoC | Intel® Mobile ULT processor | Intel® Pentium®/Celeron® SoC | Intel® Atom™/Celeron® SoC | Intel® Lynx Point SoC | Intel® Atom™/Celeron® on-board SoC |
| Memory | 1 x 204-pin 1866/1600 MHz single-channel DDR3L SO-DIMM (system max. 8 GB) | 1 x 260-pin 2133MHz DDR4 SDRAM SO-DIMM (channel 1) On-board DDR4 memory (optional 4/8GB support) | 1 x 204-pin 1600/1333 MHz single-channel DDR3L SDRAM unbuffered SO-DIMM slot (system max. 8 GB) | 4 GB solder-down 1066/1333 MHz DDR3L memory (for E3845) 2 GB solder-down 1066/1333 MHz DDR3L memory (for E3825) | 2 x 204-pin 1600/1333 MHz dual-channel DDR3L SO-DIMMs (system max. 16 GB) | 1 x 204-pin 1066/1333 MHz dual-channel DDR3L SO-DIMMs (system max. 8 GB) |
| Display Interface | Triple independent display 1 x VGA 1 x DP++ 1 x 18/24-bit dual-channel LVDS 1 x iDP | Triple independent displays 1 x VGA 1 x HDMI 1 x 18/24-bit dual-channel LVDS 1 x iDP interface for HDMI, LVDS, VGA, DVI, DP | Triple independent display 2 x HDMI 1 x 18/24-bit dual-channel LVDS | Dual independent display 1 x VGA 1 x 18/24-bit dual-channel LVDS 1 x iDP interface | Dual display supported 1 x VGA 1 x 18/24-bit dual-channel LVDS 1 x iDP interface | Dual display supported 1 x VGA 1 x 18/24-bit dual-channel LVDS 1 x iDP interface |
| Ethernet | LAN1: Realtek RTL8111 Controller LAN2: Realtek RTL8111 Controller | 1 x Intel® I219LM 1 x Intel® I211AT | LAN1: Realtek RTL8111GN controller LAN2: Realtek RTL8111GN controller | LAN1: Intel® I210-IT PCIe controller LAN2: Intel® I210-IT PCIe controller | LAN1: Intel® I218LM PHY with Intel® AMT 9.0 support LAN2: Intel® I210-AT PCIe GbE controller | LAN1: Intel® I210-AT PCIe controller with NCSI support LAN2: Intel® I211-AT PCIe controller |
| iRIS Remote Management Module | N/A | | | | 1 x iRIS-1010 slot | |
| I/O Interface | 2 x RS-232 2 x RS-232/422/485 2 x USB 3.0 4 x USB 2.0 | 2 x RS-232/422/485 4 x USB 3.0 2 x USB 2.0 | 1 x PS/2 KB/MS 2 x RS-232/422/485 2 x USB 3.0 4 x RS-232 4 x USB 2.0 | 1 x PS/2 KB/MS 1 x RS-422/485 1 x USB 3.0 3 x RS-232 5 x USB 2.0 | 1 x PS/2 KB/MS 1 x RS-422/485 2 x USB 2.0 2 x USB 3.0 3 x RS-232 | 1 x PS/2 KB/MS 1 x RS-422/485 1 x USB 3.0 1 x RS-232 5 x USB 2.0 |
| Storage Interface | 2 x SATA 6Gb/s with 5V SATA power connector | 1 x SATA 6Gb/s with 5V SATA power connector | 2 x SATA 6Gb/s with 5V SATA power connector (no RAID) 1 x eMMC4.51 (optional) | 2 x SATA 3Gb/s with 5V SATA power connector (no RAID) 1 x 4 GB on-board SSD (optional) 1 x microSD 1 x mSATA | 2 x SATA 6Gb/s with 5V power connector | 2 x SATA 3Gb/s with 5V SATA power connector (no RAID) |
| Audio | Realtek ALC662 HD Audio codec | N/A | Realtek ALC662 HD Audio codec | | | |
| Digital I/O | 8-bit programmable digital I/O | | | | | |
| Power Consumption | 12V@2.57A (Intel® Pentium® N4200 up to 2.5GHz with 8GB DDR3L memory) | 12V@4.27A (Intel® Core™ i7-6600U up to 3.4GHz CPU with 16GB (16GB x1) DDR4-2133 memory running in 3.0GHz) | 12V@1.52A (Intel® Pentium® processor N3710 with 8 GB 1600MHz DDR3L memory) | 12V@1.32A (Intel® Atom™ processor E3845 with on-board 2 GB 1333 MHz DDR3L memory) | 12V@2.72A (Intel® Core™ i5-4300U CPU with two 8 GB 1600 MHz DDR3 memory) | 12V@1.45A (Intel® Celeron® Processor J1900 CPU with one 8 GB 1333 MHz DDR3L memory) |
| Watchdog Timer | Software programmable and supports 1~255 sec. system reset | | | | | |
| Operating Environment | Temperature Range: -20°C ~ 70°C (-4°F~158°F) Relative Humidity: 5% ~ 95%, non-condensing | Temperature Range: -20°C ~ 60°C (-4°F~140°F) Relative Humidity: 5% ~ 95%, non-condensing | | | Temperature Range: -10°C ~ 60°C (14°F~140°F) Relative Humidity: 5% ~ 95% non-condensing | Temperature Range: -20°C ~ 60°C Relative Humidity: 5% ~ 95%, non-condensing |
| Expansion Slot | 2 x Full/Half-size PCIe Mini card slot (one supports mSATA, another one with SIM holder) | 1 x Full-size PCIe Mini slot (w/ SATA signal, support mSATA) 1 x Full-size PCIe Mini slot (w/ SIM card slot support) | 2 x Full/Half-size PCIe Mini card slot (one with SIM holder) | 2 x Full-size PCIe Mini card slot (one with SIM holder) | 1 x Full-size PCIe Mini card slot (supports mSATA) | 1 x Full-size PCIe Mini card slot (supports mSATA) |
| Recommended CPU Cooler | Heatsink | Heat Spreader | Heat Spreader | Heatsink | Heat Spreader | N/A |

3.5" WAFER Selection Guide

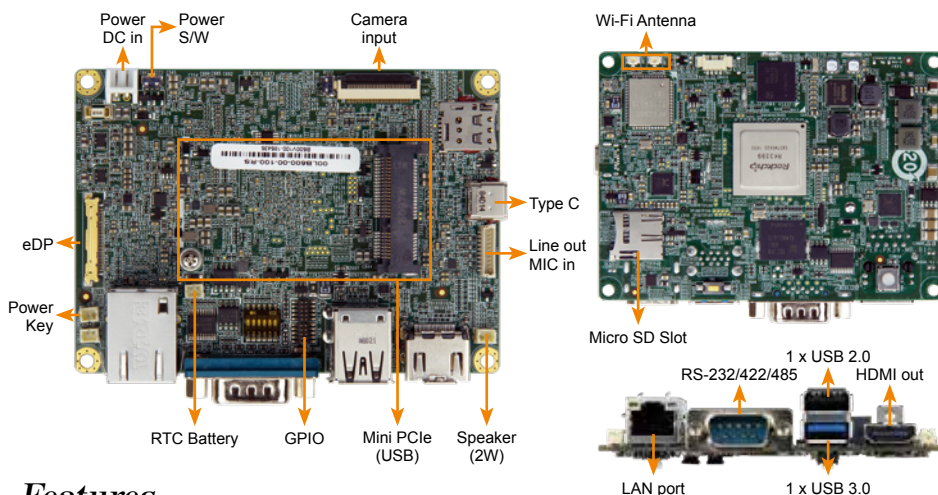


| Model Name | WAFER-KBN-i1 | WAFER-LX-R12 | WAFER-LX2-R12 |
|--------------------------------------|--|--|---|
| CPU Socket | On board | On board | On board |
| CPU Type | AMD® Embedded G-Series SoC | AMD Geode™ LX800 | AMD Geode™ LX800 |
| Chipset | AMD® Embedded G-Series SoC | AMD Geode™ LX800 + AMD CS5536 | AMD Geode™ LX800 + AMD CS5536 |
| Memory | 1 x 204-pin 1600/1333 MHz dual-channel DDR3 & DDR3L SO-DIMM (system max. 8 GB) | 1 x 200-pin 333/400 MHz. 1 GB (max.) DDR SO-DIMM | 1 x 200-pin 400 MHz. 1 GB (max.) DDR SO-DIMM |
| Display Interface | Dual display supported 1 x VGA 1 x 18/24-bit dual-channel LVDS 1 x iDP interface | Dual display supported 1 x VGA 1 x 18-bit single-channel LVDS 1 x 24-bit TTL | Dual display supported 1 x VGA 1 x 18-bit single-channel LVDS 1 x 24-bit TTL |
| Ethernet | LAN1: Intel® I210-AT PCIe controller with NCSI support LAN2: Intel® I211-AT PCIe controller | Dual LAN: 10/100Mbps RTL8100C Ethernet Controller | LAN1: 10/100Mbps RTL8100C Ethernet Controller |
| iRIS Remote Management Module | 1 x iRIS-1010 slot | N/A | |
| I/O Interface | 1 x PS/2 KB/MS 1 x RS-422/485 2 x USB 3.0 3 x RS-232 4 x USB 2.0 | 1 x LPT 1 x PS/2 for KB/MS 1 x RS-422/485 2 x RS-232 4 x USB 2.0 | 1 x RS-232/422/485 4 x USB 2.0 7 x RS-232 |
| Storage Interface | 2 x SATA 6Gb/s with 5V SATA power connector | 2 x SATA 1.5Gb/s RAID 1 x IDE 1 x CF Type II | 1 x IDE 1 x CF Type II |
| Audio | Realtek ALC662 HD Audio | Realtek ALC203 with AC'97 codec | |
| Digital I/O | 8-bit programmable digital I/O | | |
| Power Consumption | 12V@2.12A (AMD GX-415GA 1.5GHz CPU with 1333 MHz 4 GB DDR3 memory) | 5V@1.53A (AMD Geode™ LX 800 1 GB 400 MHz DDR) | 5V@1.33A (AMD Geode™ LX800 512MB 333 MHz DDR) |
| Watchdog Timer | Software programmable and supports 1~255 sec. system reset | | |
| Operating Environment | Temperature Range: 0°C ~ 60°C (32°F~140°F) Relative Humidity: 5% ~ 95% non-condensing | Temperature Range: 0°C ~ 60°C (32°F~140°F) Relative Humidity: 5% ~ 95% non-condensing | |
| Expansion Slot | 1 x Full-size PCIe Mini card slot (supports mSATA) | 1 x PC/104 | 1 x PC/104 |
| Recommended CPU Cooler | GX-415GA (with heatsink) GX-210HA (with cooler) | Heatsink | Heatsink |

Preliminary

HYPER-RK39

PICO-ITX SBC with Rockchip 3399 Processor, 2GB LPDDR3, 16GB eMMC Flash, HDMI, eDP, GbE LAN, PCIe mini, USB 3.0, USB 2.0, COM, RoHS



Features

- Pico-ITX SBC supports Rockchip RK3399
- HDMI and eDP dual display support
- OS: Android 7.1 & Ubuntu 16.04



Specifications

| Model Name | HYPER-RK39 | |
|------------------------|-------------------------|--|
| Chassis | Dimensions (WxHxD) (mm) | Single board: 100mm x 72mm |
| Motherboard | CPU | Rockchip RK3399 (Dual-core Cortex-A72 up to 2.0GHz. Quad-core Cortex-A53 up to 1.5GHz) |
| | System Memory | 2GB LPDDR3-1866 |
| Storage | SD Card | 1 x Micro SD slot |
| | Flash | 16GB eMMC NAND FLASH |
| Communication | WLAN | 802.11 a/b/g/n/ac |
| | Bluetooth | Bluetooth V4.1 |
| | WWAN | PCIe Mini LTE (optional) |
| I/O Interfaces | COM port | 1 x RS-232/422/485 |
| | GPIO | 8 bit (4 in / 4 out) |
| | Ethernet | 1 x GbE RJ45 by RTL8211E |
| | USB 3.0 | 1 x USB 3.0 Type A 1 x USB 3.0 Type-C (for OS update) |
| | USB 2.0 | 1 x USB 2.0 Type A |
| | 2nd Display | 1 x HDMI out (up to 4096x2160 P60) 1 x eDP port (up to 4096x2160 P30) |
| | Others | 1 x I ² C |
| Expansions | PCIe Mini | 1 x Full-size PCIe Mini (reserved for WWAN) |
| Multimedia | Audio | 1 x 2 pin for speaker(2W) 1 x 3 pin (Line in / Line out) |
| | Camera | 1 x MIPI CSI interfaces for Camera |
| LED Indicator & Button | Indicator | 1 x Power LED pin |
| Power | Power Input | 1 x 2 pin DC 12V in wafer connector |
| | Consumption | TBD |
| Reliability | Operating Temperature | -10°C ~ 50°C with air flow |
| | Storage Temperature | -20°C ~ 60°C |
| | Humidity | 10% ~ 95%, non-condensing |
| | Weight (Net/Gross) | TBD |
| | Safety/EMC | CE/FCC compliant |
| OS | Supported OS | Android 7.1 or Linux Ubuntu 16.04 |
| | Watchdog Timer | Yes |

Packing List

1 x HYPER-RK39 single board computer

1 x QIG

Ordering Information

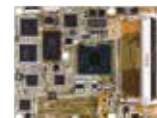
| Part No. | Description |
|-------------------|--|
| HYPER-RK39-R10-EU | PICO-ITX SBC with Rockchip 3399 Processor, 2GB LPDDR3, 16GB eMMC Flash, HDMI, eDP, GbE LAN, PCIe mini, USB 3.0, USB 2.0, COM, Wi-Fi EU reg, ROHS |

Pico-ITX Selection Guide



| Model Name | HYPER-BW | HYPER-BT | HYPER-AL |
|--------------------------------------|---|---|---|
| CPU Socket | On board | On board | On board |
| CPU Type | Intel® Pentium®/Celeron® SoC | Intel® Atom™/Celeron® SoC | Intel® Celeron® SoC |
| Chipset | Intel® Pentium®/Celeron® SoC | Intel® Atom™/Celeron® SoC | Intel® Celeron® SoC |
| Memory | 1 x 204-pin 1600/1333 MHz single-channel DDR3L SDRAM unbuffered SO-DIMM slot (system max. 8 GB) | 1 x 204-pin 1600/1333 MHz single-channel DDR3L SDRAM unbuffered SO-DIMM slot (system max. 8 GB) | 1 x 204-pin 1866/1600MHz single-channel DDR3L SDRAM unbuffered SO-DIMM slot (system max. 8GB) |
| Display Interface | Dual independent display 2 x Mini HDMI | Dual independent display 1 x VGA 1 x iDP interface | Dual independent display 1 x HDMI 1 x LVDS (2x10 pin, single channel, 24bit) |
| Ethernet | LAN: Realtek RTL8111GN controller | LAN: Intel® I211-AT PCIe GbE controller | LAN1: Realtek RTL8111H controller LAN2: Realtek RTL8111H controller |
| iRIS Remote Management Module | N/A | | |
| I/O Interface | 1 x RS-232 1 x USB 3.0 3 x USB 2.0 | 1 x RS-232 1 x USB 3.0 3 x USB 2.0 | 1 x RS-232 2 x USB 2.0 2 x USB 3.0 |
| Storage Interface | 1 x SATA 6Gb/s with 5V SATA power connector (no RAID) | 1 x SATA 3Gb/s with 5V SATA power connector (no RAID) | 1 x SATA 6Gb/s with 5V SATA power connector (no RAID) |
| Audio | 10 pin header on board support 7.1 channel HD Audio by AC-KIT-892HD-R10 | Realtek ALC662 HD Audio codec | 10 pin header on board support 7.1 channel HD Audio by AC-KIT-892HD-R10 |
| Power Consumption | 12V@1.52A (Intel® Pentium® processor N3710 with 8 GB 1600 MHz DDR3L memory) | 12V@1.35A (Intel® Celeron® processor J1900 with one 8 GB 1333 MHz DDR3L memory) | 12V@2.36A (Intel® Celeron processor J1900 with one 8 GB 1333MHz DDR3L memory) |
| Watchdog Timer | Software programmable and supports 1~255 sec. system reset | | |
| Operating Environment | Temperature Range: -20°C ~ 60°C (-4°F ~ 140°F) Relative Humidity: 5% ~ 95%, non-condensing | | |
| Expansion Slot | 1 x M.2 (B key) | N/A | 1 x M.2 A key 2230 (PCIe, USB) 1 x M.2 B key 2242 (USB, SATA) |
| CPU Cooler | Heatsink | Heat Spreader | |

Computer on Module Selection Guide



| Computer on Module | COM Express Type 10 | COM Express Type 7 | COM Express Type 6 | COM Express Type 6 |
|-----------------------|---|---|---|---|
| COM Express Size | Mini: 84 mm x 55 mm | Basic: 125 mm x 95 mm | Compact: 95 mm x 95 mm | Basic: 125 mm x 95 mm |
| Model Name | ICE-BT-T10 ICE-BT-T10W2 | ICE-BDE-T7 | ICE-ULT3 | ICE-BT-T6 |
| CPU Socket | On board | On board | On board | On board |
| CPU Type | Intel® Atom™/Celeron® on-board SoC | Intel® Xeon® Processor on-board SoC | Intel® Skylake ULT on-board SoC | Intel® Atom™/Celeron® on-board SoC |
| Chipset | Intel® Atom™/Celeron® on-board SoC | Intel® Xeon® Processor D-1548 (12MB Cache, 2.00 GHz) Intel® Xeon® Processor D-1518 (6MB Cache, 2.20 GHz) | Intel® Skylake ULT | Intel® Atom™/Celeron® on-board SoC |
| Memory | 2 GB soldered down 1066/1333 MHz DDR3L memory (up to 8 GB) | Two 240-pin 2133/1867 MHz dual-channel DDR4 SDRAM unbuffered DIMM supported (system max. 32GB) Support ECC | Two 260-pin 2133/1867 MHz dual-channel DDR4 SDRAM Unbuffered DIMM supported (system max. 32GB) | Two 204-pin 1066/1333 MHz dual-channel DDR3L SO-DIMM supported (system max. 8 GB) |
| Display Interface | Dual display supported 1 x VGA 1 x DDI 1 x eDP | NA | Tripal display supported 2 x DDI: DisplayPort/HDMI/DVI 1 x DDI: Embedded DP (Option with 1 x Dual Channel LVDS 18/24 bit via CH7511B) | Dual display supported 1 x VGA 1 x DDI 1 x 18/24-bit dual-channel LVDS |
| Ethernet | LAN1: Intel® I210 PCIe controller | LAN1: Intel® I210 2 x 10G KR Interfaces 10G Sideband Signals | LAN1: Intel® I219LM | LAN1: Intel® I210 PCIe controller |
| I/O Interface | 1 x I ² C 1 x SMBus 1 x LPC 1 x USB 3.0 2 x Serial port (TX & RX) 4 x USB 2.0 | 2 x RS-232 (2-Wire) to base board 4 x USB 3.0 to base board (with 4 x USB 2.0) | 2 x RS-232 (2-Wire) to base board 4 x USB 2.0 to base board 4 x USB 3.0 to base board (with 4 x USB 2.0) | 1 x I ² C 1 x LPC 1 x SMBus 2 x Serial port (TX & RX) 4 x USB 3.0 7 x USB 2.0 |
| Storage Interface | 2 x SATA 3Gb/s Optional soldered down SSD up to 64 GB (SATA port 1) | 2 x SATA 6Gb/s signal to base board | 2 x SATA 6Gb/s signal to base board eMMC 5.0 (optional) | 2 x SATA 3Gb/s Optional soldered down SSD up to 64 GB (SATA port 1) |
| Audio | High-definition Audio interface | NA | High-definition Audio interface | |
| Power Consumption | 12V@0.43A, Vcore_12V@0.9 A (Intel® Atom™ E3845 CPU with 2 GB 1333 MHz DDR3L memory) | 12V@2.57A, 5VSB@0.04A, 5V@0.02A (Intel® Core™ i7-6600U with two 8GB 2400 MHz DDR4 memory) | 12V@2.57A, 5VSB@0.04A, 5V@0.02A (Intel® Core™ i7-6600U with two 8GB 2400 MHz DDR4 memory) | 12V@0.54A, Vcore_12V@0.95A (Intel® Celeron® J1900 CPU with two 8 GB 1333 MHz DDR3 memory) |
| Watchdog Timer | Software programmable and supports 1~255 sec. system reset | | | |
| Operation Environment | Temperature Range: -20°C ~ 60°C -40°C ~ 85°C (ICE-BT-10-E38001W2) Relative Humidity: 10% ~ 95% non-condensing | Operating Temperature: -20°C ~ 60°C Operating Humidity: 5% ~ 95%, non-condensing | | Temperature Range: -20°C ~ 60°C Relative Humidity: 10% ~ 95% non-condensing |
| Expansion Slot | 3 x PCIe x1 signal to baseboard | 1 x PCIe x16 Gen 3 (Bifurcatable to 2 x8, 1 x8 & 2 x4, or 4 x4) 1 x PCIe x8 Gen 3 (Bifurcatable to 1 x8 & 2 x4) 8 x PCIe x1 (Gen2) signal to base board Bifurcatable to 1 x8 or 2 x4 or 4 x1+1x4 or 8 x1 | 1 x PCIe x1 signal to base board (Via PCIe x16 channel) 8 x PCIe x1 signal to base board | 5 x PCIe x1 signal to baseboard |

PC/104 Selection Guide

New



| Model Name | PM-BT | PM-LX | PM-LX2 |
|--------------------------------------|---|---|--|
| CPU Socket | On board | On board | On board |
| CPU Type | Intel® Atom™/Celeron® SoC | AMD Geode™ LX 800 500 MHz | AMD Geode™ LX 800 500 MHz |
| Chipset | Intel® Atom™/Celeron® SoC | Geode™ LX800 + CS5536 | Geode™ LX800 + CS5536 |
| Memory | 1 x 204-pin 1066/1333 MHz DDR3L SO-DIMM (system max. 8 GB) | 1 x 200-pin 400 MHz 1 GB (max.) DDR SDRAM SO-DIMM | 1 x 200-pin 400 MHz 1 GB (max.) DDR SDRAM SO-DIMM |
| Display Interface | Dual display supported 1 x VGA 1 x 18/24-bit single-channel LVDS | Dual display supported 1 x VGA 1 x 24-bit TTL | Dual display supported 1 x VGA 1 x 24-bit TTL |
| Ethernet | GbE by Intel® I210 Ethernet PHY | 10/100Mbps LAN by Realtek RTL8100C | 10/100Mbps LAN by Realtek RTL8100C |
| iRIS Remote Management Module | N/A | | |
| I/O Interface | 2 x RS-232/422/485 (2x5, P=2.0) 3 x USB 2.0 (1x4 pin, P=1.25) | 1 x KB/MS by pin header 1 x LPT 1 x RS-422/485 2 x RS-232 2 x USB 2.0 | 1 x KB/MS by pin header 1 x LPT 1 x RS-422/485 2 x RS-232 2 x USB 2.0 |
| Storage Interface | 1 x SATA 3Gb/s with 5V SATA power connector On-board SSD (optional) | 1 x IDE 1 x CF Type II | 1 x Slim FDD 1 x IDE 1 x CF Type II |
| Audio | N/A | | |
| Digital I/O | 1 x 8-bit DIO | N/A | |
| Power Consumption | TBD | 5V@1.13A (AMD Geode™ LX 800 with 1 GB DDR 400 MHz) | 5V@1.09A (AMD Geode™ LX 800 with 512MB DDR 400 MHz) |
| Watchdog Timer | Software programmable and supports 1~255 sec. system reset | | |
| Operating Environment | -20°C ~ 60°C (for J1900/N2930/N2807) -40°C ~ 85°C (for E38xx) | Temperature Range: 0°C ~ 60°C Relative Humidity: 5% ~ 95%, non-condensing | Temperature Range: -40°C ~ 70°C (W) Relative Humidity: 5% ~ 95%, non-condensing |
| Expansion Slot | 1 x Full-size PCIe Mini slot (support mSATA) 1 x PC/104-Plus (ISA+PCI) | 1 x PCI-104 | 1 x PC-104 |
| CPU Cooler | Heatsink | Heatsink | Heatsink |

Industrial Automation Solution

IEI offers complete rugged fanless products with a wide range of I/O interfaces and multiple expansion, allowing users to connect to different devices for comprehensive automation solution. IEI's industrial automation solution provides a reliable platform to fulfill a wide variety of application demand, such as machine automation, surveillance application, and information kiosk. To fight the upcoming trend of IoT, IEI develops an IPMI 2.0 compliant technology - iRIS (IEI Remote Intelligent System). iRIS is a hardware-level remote management solution that can make your systems more efficient in system integration. "TANK" is a model name for a series of IEI ruggedize embedded box products.



■ TANK-800 Series

Multiple PCI/PCIe Expansion

- Great flexibility of expansion slots
- IPMI function for remote control management
- Design fulfills high storage demand



■ TANK-600 Series

Multiple Serial Port

- Support 8 COM ports
- mSATA and 2.5" SATA storage device
- Wide range temperature

1. Industrial Automation System

| Model Name | Processor |
|----------------|--|
| TANK-871-Q170 | Intel® Core™ i7-6700TE 2.4 GHz, Intel® Core™ i5-6500TE 2.3 GHz |
| TANK-870-Q170 | Intel® Core™ i7-6700TE 2.4 GHz, Intel® Core™ i5-6500TE 2.3 GHz |
| TANK-870e-H110 | Intel® Core™ i7-6700TE 2.4 GHz, Intel® Core™ i5-6500TE 2.3 GHz |
| TANK-860-HM86 | Intel® Core™ i5-4400E 2.7 GHz, Intel® Celeron® 2000E 2.2 GHz |
| TANK-820-H61 | Intel® Core™ i5/i3, Pentium® processor |
| TANK-801-BT | Intel® Celeron® J1900 2 GHz |
| TANK-800-D525 | Intel® Atom™ D525 1.8 GHz |
| TANK-760-HM86 | Intel® Core™ i7-4700EQ 2.4 GHz, Intel® Core™ i5-4400E 2.7 GHz, Intel® Celeron® 2000E 2.2 GHz |
| TANK-620-ULT3 | Intel® Celeron® 3855U 1.6GHz |
| TANK-610-BW | Intel® Celeron® N3160 1.6GHz |



2. DIN-Rail Embedded System

| Model Name | Processor |
|-------------|-----------------------------|
| DRPC-120-BT | Intel® Atom™ E3845 1.91 GHz |
| DRPC-130-AL | Intel® Atom™ E3930 1.80 GHz |



3. Compact Size Embedded System

| Model Name | Processor |
|-------------|--------------------------------|
| uIBX-250-BW | Intel® Celeron® N3160 1.6GHz |
| uIBX-230-BT | Intel® Celeron® N2930 1.83 GHz |



Industrial Automation System



| Model Name | | TANK-871-Q170 | TANK-870-Q170 | TANK-870e-H110 |
|----------------|--------------------------|--|--|---|
| Chassis | Color | Black C + Silver | Black C + Silver | Dark silver purple + Silver |
| | Dimensions (WxDxH) (mm) | 82.2 x 255.2 x 204 | 2-slot: 121.5 x 255.2 x 205 4-slot: 154.8 x 255.2 x 205 | 132.6 x 255.2 x 190 |
| | System Fan | Fanless | Fanless | Fanless |
| | Chassis Construction | Extruded aluminum alloy | Extruded aluminum alloys | Extruded aluminum alloys |
| Motherboard | CPU | Intel® Core™ i7-6700TE 2.4 GHz Intel® Core™ i5-6500TE 2.3 GHz | Intel® Core™ i7-6700TE (2.4 GHz, quad-core, TDP=35W) Intel® Core™ i5-6500TE (2.3 GHz, quad-core, TDP=35W) | Intel® Core™ i7-6700TE (2.4 GHz, quad-core, TDP=35W) Intel® Core™ i5-6500TE (2.3 GHz, quad-core, TDP=35W) |
| | Chipset | Intel® Q170 | Intel® Q170 | Intel® H110 |
| | System Memory | 2 x 260 pin DDR4 SO-DIMM, Pre-installed one 4GB (system max:64GB) | 2 x 260-pin DDR4 SO-DIMM, one 4 GB pre-installed (system max: 64GB) | 2 x 260-pin DDR4 SO-DIMM, one 4 GB pre-installed (system max: 32GB) |
| IPMI | iRIS Solution | 1 x iRIS-2400 (optional) | 1 x iRIS-2400 (optional) | N/A |
| Storage | Hard Drive | 2 x 2.5" SATA 6Gb/s HDD/SSD bay (RAID 0/1 support) | 2 x 2.5" SATA 6Gb/s HDD/SSD bay (RAID 0/1 support) | 1 x 2.5" SATA 6Gb/s HDD/SSD bay |
| | mSATA | 1 x mSATA | 1 x mSATA | N/A |
| | USB 3.0 | 4 | 4 | 4 |
| I/O Interfaces | USB 2.0 | 4 | 4 | N/A |
| | Ethernet | 2 x RJ-45 LAN1: Intel® I219LM PCIe controller LAN2 (iRIS): Intel® I210 PCIe controller | 2 x RJ-45 LAN1: Intel® I219LM PCIe controller LAN2 (iRIS): Intel® I210 PCIe controller | 2 x RJ-45 PCIe GbE by RTL8111G controller |
| | COM Port | 4 x RS-232 (2 x RJ-45, 2 x DB-9 w/ isolation) 2 x RS-232/422/485 (DB-9) | 4 x RS-232 (2 x RJ-45, 2 x DB-9 w/ isolation) 2 x RS-232/422/485 (DB-9) | 2 x RS-232/422/485 (DB-9, w/ isolation) |
| | Digital I/O | 8 bit Digital I/O , 4 bit input / 4 bit output | 8-bit digital I/O , 4-bit input / 4-bit output | N/A |
| | Display | 1 x VGA, 1 x HDMI/DP, 1 x iDP (optional) | 1 x VGA, 1 x HDMI/DP, 1 x iDP (optional) | 1 x VGA, 1 x HDMI 1.4 |
| | Resolution | VGA: Up to 1920 x 1200@60Hz HDMI: Up to 4096x2160@24Hz | VGA: Up to 1920 x 1200@60Hz HDMI/DP: Up to 4096x2304@60Hz | VGA: Up to 1920 x 1200@60Hz HDMI 1.4: Up to 4096x2160@24Hz |
| | Audio | 1 x Line-out ; 1 x Mic-in | 1 x Line-out, 1 x Mic-in | 1 x Line-out, 1 x Mic-in |
| | Wireless | 1 x 802.11 a/b/g/n/ac (optional) | 1 x 802.11 a/b/g/n/ac (optional) | 1 x 802.11 a/b/g/n/ac (optional) |
| | Expansions | Backplane | N/A | 2-slot model: 1 x PCIe x16, 1 x PCI 2-slot model: 2 x PCIe x8 4-slot model: 2 x PCIe x8, 2 x PCI, 1 x Full-size PCIe Mini 4-slot model: 1 x PCIe x16, 3 x PCI, 1 x Full-size PCIe Mini |
| PCIe Mini | | 1 x Half-size PCIe Mini slot 1 x Full-size PCIe Mini slot (supports mSATA, colay with SATA) | 1 x Half-size PCIe Mini slot 1 x Full-size PCIe Mini slot (supports mSATA, colay with SATA) | 1 x Full-size PCIe Mini slot 1 x Full-size PCIe Mini slot (supports mSATA, colay with SATA) |
| Power | Power Input | DC Jack: 9 V~36 V DC Terminal Block: 9 V~36 V DC | DC Jack: 9 V~36 V DC Terminal Block: 9 V~36 V DC | DC Jack: 9 V~36 V DC |
| | Power Consumption | 19 V@3.68 A (Intel® Core™ i7-6700TE with 8 GB memory) | 19 V@3.68 A (Intel® Core™ i7-6700TE with 8 GB memory) | 19 V@3.44 A (Intel® Core™ i7-6700TE with 8 GB memory) |
| | Internal Power Connector | 5V@3A or 12V@3A | 5V@3A or 12V@3A | 5V@3A or 12V@3A |
| Reliability | Mounting | Wall mount | Wall mount | Wall mount & Din Rail |
| | Operating Temperature | i7-6700TE -20°C ~ 45°C with air flow (SSD), 10% ~ 95%, non-condensing i5-6500TE -20°C ~ 60°C with air flow (SSD), 10% ~ 95%, non-condensing | i7-6700TE *-20°C ~ 45°C with air flow (SSD), 10% ~ 95%, non-condensing i5-6500TE *-20°C ~ 60°C with air flow (SSD), 10% ~ 95%, non-condensing | -20°C ~ 50°C with air flow (SSD), 10% ~ 95%, non-condensing |
| | Operating Shock | Half-sine wave shock 5G, 11ms; 100 shocks per axis | Half-sine wave shock 5G, 11ms, 100 shocks per axis | Half-sine wave shock 5G, 11ms, 100 shocks per axis |
| | Operating Vibration | MIL-STD-810G 514.6 C-1 (with SSD) | MIL-STD-810G 514.6 C-1 (with SSD) | MIL-STD-810G 514.6C-1 (with SSD) |
| | Weight (Net/Gross) | TBD | 2-slot: 4.2 kg/6.3 kg 4-slot: 4.5 kg/6.5 kg | 2.8 kg/4.3 kg |
| | Safety/EMC | CE/FCC | CE/FCC | CE/FCC |
| OS | Supported OS | Microsoft® Windows® 8 Embedded, Microsoft® Windows® Embedded Standard 7 E, Microsoft® Windows® 10 IoT Enterprise | | |

Industrial Automation System



| Model Name | | TANK-860-HM86 | TANK-801-BT | TANK-820-H61 | TANK-800-D525 |
|----------------|-------------------------|---|---|---|---|
| Chassis | Color | Black C + Silver | Black C + Silver | Black C + Silver | Black C + Silver |
| | Dimensions (WxDxH) (mm) | 2-slot: 121.5 x 255.2 x 205 4-slot: 154.8 x 255.2 x 205 6-slot: 195.4 x 255.2 x 205 | 136 x 219 x 188 | 133 x 269 x 208 | 136 x 219 x 188 |
| | System Fan | Fanless | Fanless | Fanless | Fanless |
| | Chassis Construction | Extruded aluminum alloys | Extruded aluminum alloys | Extruded aluminum alloys | Extruded aluminum alloys |
| Motherboard | CPU | Intel® Core™ i5-4400E 2.7 GHz Intel® Celeron® 2000E 2.2 GHz | Intel® Celeron® J1900 2 GHz | Intel® Core™ i5-2xxT (above 2.7 GHz) Intel® Core™ i3-2xxT (above 2.5 GHz) Intel® Pentium® G6xxT (above 2.2 GHz) | Intel® Atom™ D525 1.8 GHz |
| | Chipset | Intel® HM86 | SoC | Intel® H61 | Intel® ICH8M |
| | System Memory | 2 x 204-pin DDR3 SO-DIMM, one 4GB pre-installed (system max: 16 GB) | 1 x 204-pin DDR3L SO-DIMM, 2GB pre-installed (system max: 8 GB) | On-board DDR3 2 GB memory 1 x 204-pin DDR3 SO-DIMM (system max: 10 GB) | On-board DDR3 1 GB memory 1 x 204-pin DDR3 SDRAM SO-DIMM (system max: 3 GB) |
| IPMI | iRIS Solution | 1 x iRIS-2400 (optional) | 1 x iRIS-2400 (optional) | N/A | N/A |
| Storage | Hard Drive | 2 x 2.5" SATA 6Gb/s HDD/SSD bay | 1 x 2.5" SATA 3Gb/s HDD/SSD bay | 1 x 2.5" SATA 3Gb/s HDD/SSD bay | 1 x 2.5" SATA 3Gb/s HDD/SSD bay |
| | CF Card/CFast | 1 x CFast | 1 x CFast | 1 x CF Type II | 1 x CF Type II |
| I/O Interfaces | USB 3.0 | 4 | 2 | 2 | N/A |
| | USB 2.0 | 2 | 2 | 4 | 4 |
| | Ethernet | 2 x RJ-45 1 x PCIe GbE by Intel® I210 1 x PCIe GbE by Intel® I217LM | 2 x RJ-45 1 x PCIe GbE by Intel® I210 1 x PCIe GbE by Intel® I211 | 2 x RJ-45 PCIe GbE by Realtek 8111E controller | 2 x RJ-45 PCIe GbE by Realtek 8111E controller |
| | COM Port | 4 x RS-232 (DB-9, two with isolation) 2 x RS-422/485 (RJ-45) | 2 x RS-232 (DB-9) 2 x RS-232/422/485 (DB-9, with isolation) | 6 x RS-232 (DB-9, two with isolation) 2 x RS-422/485 (RJ-45) | 4 x RS-232 (DB-9) 2 x RS-422/485 (RJ-45) |
| | Digital I/O | 8-bit digital I/O, 4-bit input/4-bit output | 16-bit digital I/O, 8-bit input/8-bit output | 8-bit digital I/O, 4-bit input/4-bit output | 8-bit digital I/O, 4-bit input/4-bit output |
| | Display | 1 x VGA, 1 x DVI-I, 1 x DisplayPort | 1 x DisplayPort, 1 x DVI-I | 1 x VGA, 1 x DVI-I | 1 x VGA |
| | Resolution | VGA: Up to 1920 x 1200@60Hz DVI-I: Up to 2500 x 1600@60Hz Displayport: Up to 2500 x 1600@60Hz | DisplayPort: Up to 2560 x 1600 MHz DVI-I: Up to 2560 x 1600 MHz | VGA: Up to 2048 x 1536@75Hz DVI-I: Up to 1920 x 1080@60Hz | VGA: Up to 2048 x 1536@75Hz |
| | Audio | 1 x Line-out, 1 x Mic-in | 1 x Line-out, 1 x Mic-in | 1 x Line-out, 1 x Mic-in | 1 x Line-out, 1 x Mic-in |
| Expansions | Wireless | 1 x 802.11b/g/n (optional) | 1 x 802.11b/g/n (optional) | N/A | N/A |
| | PCI/PCle | 2 A: Two PCIe x8 (physical PCIe x16 slot) 4 A: Two PCIe x8 (physical PCIe x16 slot) + 2 x PCI 6 A: One PCIe x8 (physical PCIe x16 slot) + two PCIe x4 + three PCI | 3A: One PCIe x1 + Two x PCI 3B: Two PCIe x1 + One x PCI 3C: Three x PCI | 2P1E: Two PCI, One PCIe x8 (physical PCIe x16 slot) 1P2E: One PCI, One PCIe x1 (physical x4 slot), One PCIe x8 (physical x16 slot) | 2P1E: Two PCI, One PCIe x4 (physical PCIe x16 slot) 1P2E: One PCI, One PCIe x1 (physical x4 slot), One PCIe x2 (physical x16 slot) |
| Power | PCle Mini | 2A: 1 x Full-size (support mSATA) 4A: 1 x Full-size (support mSATA) + 1 x Full-size (on backplane) 6A: 1 x Full-size (support mSATA) + 1 x Full-size (on backplane) | 1 x Full-size PCle Mini | N/A | N/A |
| | Power Input | DC Jack: 9 V~36 V DC Terminal Block: 9 V~36 V DC | DC Jack: 9 V~36 V DC Terminal Block: 9 V~36 V DC | DC Jack: 9 V~24 V DC Terminal Block: 9 V~24 V DC | DC Jack: 10.5 V~36 V DC Terminal Block: 9 V~36 V DC |
| Reliability | Power Consumption | 19 V@3.34 A (Intel® Core™ i5-4400E with 4 GB memory) | 19 V@1.8 A (Intel® Celeron® J1900 with 2 GB DDR3 memory) | 19 V@3.5 A (Intel® Core™ i3-2100 with 6 GB DDR3 memory) w/o add-on card | 19 V@1.73 A (Intel® Atom™ D525 with 1 GB DDR3 Memory) |
| | Mounting | Wall mount | Wall mount | Wall mount | Wall mount |
| | Operating Temperature | -20°C ~ 60°C with air flow (SSD), 5% ~ 95%, non-condensing | -20°C ~ 60°C with air flow (SSD), 5% ~ 95%, non-condensing | -20°C ~ 60°C with air flow (SSD), 5% ~ 95%, non-condensing | -20°C ~ 70°C with air flow (SSD), 5% ~ 95%, non-condensing |
| | Operating Shock | Half-sine wave shock 5G, 11ms, 3 shocks per axis | Half-sine wave shock 5G, 11ms, 3 shocks per axis | Half-sine wave shock 5G, 11ms, 3 shocks per axis | Half-sine wave shock 5G, 11ms, 3 shocks per axis |
| | Operating Vibration | MIL-STD-810F 514.5C-2 (with SSD) | MIL-STD-810F 514.5C-2 (with SSD) | MIL-STD-810F 514.5C-2 (with SSD) | MIL-STD-810F 514.5C-2 (with SSD) |
| | Weight (Net/Gross) | 2-slot: 4.2 kg/6.3 kg 4-slot: 4.5 kg/6.5 kg 6-slot: 4.8 kg/6.9 kg | 2.8 kg/4.3 kg | 4.2 kg/6.3 kg | 2.6 kg/4.1 kg |
| Safety/EMC | CE/FCC | CE/FCC | CE/FCC | CE/FCC | |
| OS | Supported OS | Microsoft® Windows® 8 Embedded, Microsoft® WES7E, Microsoft® Windows® 10 IoT Enterprise | Microsoft® Windows® 8 Embedded, Microsoft® WES7E, Microsoft® Windows® 10 IoT Enterprise | Microsoft® WES7E, Microsoft® Windows® XP Embedded | Microsoft® WES7E, Microsoft® Windows® XP Embedded |

*Notes : Power adapter supports 0°C ~ 40°C

Industrial Automation System



| Model Name | TANK-610-BW | TANK-620 | TANK-760-HM86 | |
|----------------|--------------------------------|--|--|--|
| Chassis | Color | Black C + Silver | Black C + Silver | Black C + Silver |
| | Dimensions (WxDxH) (mm) | 184 x 200.6 x 58.2 | 260 x 200 x 100 | 310 x 200 x 69.8 |
| | System Fan | Fanless | Fanless | Fanless |
| Motherboard | Chassis Construction | Extruded Aluminum alloy | Aluminum alloys | Extruded Aluminum alloy |
| | CPU | Intel® Celeron® N3160 processor (up to 2.24GHz, quad-core, 2MB cache, TDP=6W) | Skylake 3855U 15W | Intel® Core™ i7-4700EQ 2.4 GHz Intel® Core™ i5-4400E 2.7 GHz Intel® Celeron® 2000E 2.2 GHz |
| | Chipset | SoC | SoC | Intel® HM86 |
| IPMI | System Memory | 2 x 204-pin DDR3L SO-DIMM, one 2GB pre-installed (system max: 8 GB) | 1 x On-board 4 GB 1 x DDR4 2133 MHz SO-DIMM (system max : 32GB) | 2 x 204-pin DDR3 SO-DIMM, one 4GB pre-installed (system max: 16 GB) |
| | iRIS Solution | N/A | N/A | 1 x iRIS-2400 (optional) |
| Storage | Hard Drive | 1 x 2.5" SATA 6Gb/s HDD/SSD bay | 1 x 2.5" SATA 6Gb/s HDD/SSD Bay | 2 x 2.5" SATA 6Gb/s HDD/SSD bay |
| | CF Card/CFast | N/A | 1 x CF Card (optional) | 1 x CFast |
| I/O Interfaces | USB 3.0 | 4 | 4 | 4 |
| | USB 2.0 | N/A | 4 | 2 |
| | Ethernet | 2 x RJ-45 PCIe GbE by Intel® I210-IT controller | 2 x RJ-45 PCIe GbE by Intel I211 | 2 x RJ-45 1 x PCIe GbE by Intel® I210 1 x PCIe GbE by Intel® I217LM |
| | Fiber | N/A | 6 x RS-232 (optional by pin header) | N/A |
| | COM Port | 6 x RS-232 2 x RS-232/422/485 | 8 x RS-232/422/485 ports 1 x 24-bit GPIO | 4 x RS-232 (DB-9, with isolation) 2 x RS-232/422/485 8-bit digital I/O, 4-bit input/4-bit output |
| | CAN-bus | N/A | N/A | 2 x Phoenix terminal block with isolation |
| | Display | 1 x VGA, 1 x HDMI | 2 x VGA, 1 x LVDS or 3 x VGA | 1 x VGA, 1 x HDMI, 1 x DisplayPort |
| | Resolution | VGA: Up to 1920 x 1200@60Hz HDMI: Up to 3840 x 2160@30Hz | 3 x VGA / 1 x LVDS 2 x VGA (up to 1920 x 1200@60Hz) | VGA: Up to 1920 x 1200@60Hz HDMI: Up to 2500 x 1600@60Hz |
| | Audio | 1 x Line-out, 1 x Mic-in | 1 x Mic-in, 1 x Speaker, 1 x line-out | 1 x Mic-in, 1 x line-out |
| Wireless | 1 x 802.11b/g/n (optional) | 1 x 802.11b/g/n (optional) | 1 x 802.11b/g/n (optional) | |
| Expansions | PCIe | N/A | N/A | N/A |
| | PCIe Mini | 1 x Full-size PCIe Mini (support mSATA, co-lay SATA, w/o USB Signal), 1 x Half-size PCIe Mini | 1 x Full-size (support mSATA, co-lay SATA) 1 x Full-size PCIe Mini | 3 x Full-size PCIe Mini (1 x support mSATA, co-lay SATA) |
| Power | Power Input | DC Jack: 9 V~36 V DC | 9 V ~ 36 V DC | DC Jack: 9 V~36 V DC Terminal Block: 9 V~36 V DC |
| | Power Consumption | 12 V@1.49 A (Intel® Celeron® N3160 with 4 GB DDR3L memory) | TBD | 19 V@3.2 A (Intel® Core™ i5 i5-4400E with 4 GB memory) |
| Reliability | Mounting | Wall mount, VESA 100 | Wall mount | Wall mount |
| | Operating Temperature/Humidity | -40°C ~ 60°C with air flow (SSD), 10% ~ 95%, non-condensing | -30°C ~ 70°C with air flow (SSD), 10% ~ 95%, non-condensing | i5: -20°C ~ 70°C with air flow (SSD) i7: -20°C ~ 50°C with air flow (SSD) |
| | Operating Shock | Half-sine wave shock 5G, 11ms, 100 shocks per axis | Half-sine wave shock 5G, 11ms, 100 shocks per axis | Half-sine wave shock 5G, 11ms, 3 shocks per axis |
| | Operating Vibration | MIL-STD-810G 514.6C-1 (with SSD) | MIL-STD-810G 514.6C-1 (with SSD) | MIL-STD-810F 514.5C-2 (with SSD) |
| | Weight (Net/Gross) | 2.2Kg/3Kg | TBD | 4.2 kg/6.9 kg |
| Safety/EMC | CE/FCC | CE/FCC | CE/FCC | |
| OS | Supported OS | Microsoft® Windows 8 Embedded, Microsoft® WES7E, Microsoft® Windows® 10 IoT Enterprise | Microsoft® Windows 8 Embedded, Microsoft® Windows® Embedded Standard 7 E, Microsoft® Windows® 10 | Microsoft® Windows® 8 Embedded, Microsoft® WES7E, Microsoft® Windows® 10 IoT Enterprise |

*Notes : Power adapter supports 0°C ~ 40°C

DIN-Rail Embedded System



| Model Name | | DRPC-130-AL | DRPC-120-BT |
|----------------|-------------------------|--|---|
| Chassis | Color | Black | Black |
| | Dimensions (WxDxH) (mm) | 154 x 123 x 56 | 74.08 x 140 x 171.5 |
| | System Fan | Fanless | Fanless |
| | Chassis Construction | Extruded aluminum alloy | Extruded aluminum alloys |
| Motherboard | CPU | Intel® Atom™ E3930 1.8 GHz | Intel® Atom™ E3845 1.91 GHz |
| | Chipset | SoC | SoC |
| | System Memory | 1 x 204-pin DDR3L SO-DIMM 4 GB pre-installed (system max: 8GB) | 1 x 204-pin DDR3L SO-DIMM 2 GB pre-installed (system max: 8GB) |
| Storage | iRIS Solution | N/A | 1 x iRIS-2400 (optional) |
| | Hard Drive | 1 x 2.5" SATA 6Gb/s HDD/SSD bay | 1 x 2.5" SATA 3Gb/s HDD/SSD bay |
| | eMMC | 1 x 8GB eMMC 5.0 support (optional) | N/A |
| I/O Interfaces | CF Card/CFast | N/A | N/A |
| | USB 3.0 | 4 | 2 |
| | USB 2.0 | 1 by pin header | 2 |
| | Ethernet | 2 x RJ-45 PCIe GbE by Intel® I211 controller | 2 x RJ-45 1 x PCIe GbE by Intel® I210 controller 1 x PCIe GbE by Intel® I211 controller |
| | COM Port | 4 x RS-232/422/485 (DB-9) | 2 x RS-232 (DB-9 w/ 3kV isolation protection*) 2 x RS-422/485 (DB-9 w/ 3kV isolation protection*) |
| | Digital I/O | 8-bit digital I/O, 4-bit input/4-bit output (DB-9) | 8-bit digital I/O, 4-bit input/4-bit output |
| | CAN-bus | 1 x DB-9 w/ 2.5kV isolation protection supporting 2-port CAN-bus | N/A |
| | Display | 2 x HDMI 1.4b | 1 x VGA, 1 x HDMI |
| | Resolution | Up to 3840 x 2160 @ 30Hz | Up to 1920 x 1200 @ 60Hz |
| | SIM | 1 x internal On-board SIM slot | N/A |
| | Audio | N/A | N/A |
| | Wireless | 1 x 802.11a/b/g/n/ac (optional) | 1 x 802.11a/b/g/n/ac (optional) |
| | TPM | 1 x TPM 2.0 (2x10 pin, optional) | N/A |
| | Other | 1 x Power Button, 1 x LED for HDD (Green), 1 x Reset Button, 1 x LExD for Power (Red), 1 x AT/ATX Switch | N/A |
| Expansions | PCIe Mini | 1 x Full-size PCIe Mini slot 1 x Full-size PCIe Mini slot (supports mSATA, colay with SATA) | 1 x Half-size PCIe Mini slot (w/o USB signal) 1 x Full-size PCIe Mini slot (supports mSATA, colay with SATA) |
| | M.2 | N/A | N/A |
| Power | Power Input | 3-pin terminal block: 12 V ~ 24 V DC | 3-pin terminal block: 9 V ~ 30 V DC |
| | Power Consumption | TBD | 12 V@ 2.1 A (Intel® Atom™ E3845 with 2 GB memory) |
| | Remote PWR | PSON 2-pin terminal block | N/A |
| Reliability | Mounting | DIN-rail / Wall mounting | DIN-rail |
| | Operating Temperature | -20°C ~ 70°C with air flow (SSD), 10% ~ 95%, non-condensing | -20°C ~ 60°C with air flow (mSATA), 5% ~ 95%, non-condensing |
| | Operating Shock | Half-sine wave shock 5G, 11ms, 100 shocks per axis, IEC68-2-27 | Half-sine wave shock 5G |
| | Operating Vibration | MIL-STD-810G 514.6C-1 (SSD) | MIL-STD-810F 514.5C-2 (with SSD) |
| | Weight (Net/Gross) | 1.4Kg/2.5Kg | 1.4 kg/2.5 kg |
| | Safety/EMC | CE/FCC | CE/FCC |
| | Watchdog Timer | Programmable 1~255 sec/min | N/A |
| | IP Level | IP40 | N/A |
| OS | Supported OS | Microsoft® Windows 10 | Microsoft® 8, Microsoft® Windows® Embedded Standard 7 E |

Compact Size Embedded System



| Model Name | | ulBX-250-BW | ulBX-230-BT |
|----------------|-------------------------|---|---|
| Chassis | Color | Black | Silver |
| | Dimensions (WxDxH) (mm) | 136.6 x 102.4 x 52 | 137 x 102.8 x 57 |
| | System Fan | Fanless | Fanless |
| | Chassis Construction | Extruded aluminum alloy | Extruded aluminum alloys |
| Motherboard | CPU | Intel® Celeron® N3160 (up to 2.24 GHz, quad-core, 2 MB cache, TDP=6W) | Intel® Celeron® N2930 1.83 GHz |
| | Chipset | SoC | SoC |
| | System Memory | 1 x 204-pin DDR3L SO-DIMM 2 GB pre-installed (system max: 8GB) | 1 x 204-pin DDR3L SO-DIMM 2 GB pre-installed (system max: 8GB) |
| Storage | Hard Drive | 1 x 2.5" SATA 6Gb/s HDD/SSD bay | 1 x 2.5" SATA 3Gb/s HDD/SSD bay |
| | CF Card/CFast | N/A | N/A |
| I/O Interfaces | USB 3.0 | 4 | 1 |
| | USB 2.0 | N/A | 3 |
| | Ethernet | 2 x RJ-45 PCIe GbE by Intel® I211 controller | 1 x RJ-45 PCIe GbE by Intel® I210 controller |
| | COM Port | 2 x RS-232/422/485 (RJ-45) | 1 x RS-232 (DB-9) |
| | Button | 1 x Power button 1 x AT/ATX switch 1 x Reset button | 1 x Power button 1 x AT/ATX switch 1 x Reset button |
| | Display | 1 x HDMI, 1 x VGA | VGA |
| | Resolution | HDMI: 3840 x 2160@30MHz VGA: 1920 x1200@60Hz | Up to 2560 x 1600@60Hz |
| | Audio | 1 x Line-out, 1 x Mic-in | 1 x Line-out, 1 x Mic-in |
| | Wireless | 1x 802.11a/b/g/n/ac (optional) | N/A |
| Expansions | PCIe Mini | 1 x Full-size PCIe Mini card (supports mSATA) | N/A |
| Power | Power Input | DC Jack: 12 V DC | DC Jack: 12 V DC |
| | Power Consumption | 12V @ 2A (Intel® Celeron® N3160 with 2 GB memory) | 12 V@1.8 A (Intel® Celeron® N2930 with 2 GB memory) |
| Reliability | Mounting | Wall mount, VESA 75 | Wall mount |
| | Operating Temperature | -20°C ~60°C with air flow (SSD), 10% ~ 95%, non-condensing | -20°C ~60°C with air flow (SSD), 5% ~ 95%, non-condensing |
| | Operating Shock | Half-sine wave shock 5G, 11ms, 3 shocks per axis | Half-sine wave shock 5G, 11ms, 3 shocks per axis |
| | Operating Vibration | MIL-STD-810F 514.5 C-1(HDD), MIL-STD-810F 514.5 C-2(SSD) | MIL-STD-810F 514.5-1 (HDD), MIL-STD-810F 514.5 C-2 (SSD) |
| | Weight (Net/Gross) | 470 g/1.4 kg | 470 g/1.4 kg |
| | Safety/EMC | CE/FCC | CE/FCC |
| OS | Supported OS | Microsoft® Windows 8, Microsoft® Embedded Standard 7 E | Microsoft® Windows 8, Microsoft® Embedded Standard 7 E |

Industrial Computer Chassis

As a leading hardware provider in embedded SBC, IEI offers complete industrial computer chassis from ATX/microATX/Mini-ITX support chassis to 1U~7U chassis to support different embedded single board computers, and provides flexibility and scalability for industrial applications. Customers can choose different platform to integrate and fulfil different demanding application and vertical application.

1. SBC Embedded System



| | | | |
|---------------------|-------------------------|-------------------------|--------------------------|
| Model Name | ECN-380A Series | ECN-360A Series | ECW-281B Series |
| MB Model No. | NANO Series (EPIC SBC)* | NANO Series (EPIC SBC)* | WAFER Series (3.5" SBC)* |

*Please refer to the ECN & ECW datasheets for the NANO & WAFER support list.

2. Embedded Chassis Series



| | | |
|---------------------|-------------------------|----------------------------|
| Model Name | EBC-3220 | EBC-3100 / EBC-3000 |
| MB Model No. | KINO Series (Mini-ITX)* | KINO Series (Mini-ITX)* |



| | | | | |
|---------------------|-------------------------|-------------------------|-------------------------|-------------------------|
| Model Name | EBC-3300 | EBC-2200 | EBC-2100 | EBC-1100 |
| MB Model No. | tKINO Series (Mini-ITX) | NANO Series (EPIC SBC)* | NANO Series (EPIC SBC)* | WAFER Series (3.5" SBC) |

*Please refer to the EBC datasheets for the support list.

3. Industrial Computer Chassis



| | | | |
|---------------------|----------------------|--|---|
| Model Name | RACK-1150G 1U | RACK-220G 2U 6-slot | RACK-360 4U 14-slot |
| MB Model No. | Full-size CPU card | Full-size CPU card microATX, Mini-ITX | Full-size CPU card ATX, microATX, Mini-ITX |



| | | | |
|---------------------|----------------|----------------|----------------|
| Model Name | ECA-300 | ECA-200 | ECA-100 |
| MB Model No. | ATX/mATX | mATX | ATX/mATX |



| | | | |
|---------------------|-------------------------|------------------------|------------------------|
| Model Name | PAC-125G 10-slot | PAC-700G 7-slot | PAC-53GH 3-slot |
| MB Model No. | Full-size CPU card | Half-size CPU card | Half-size CPU card |

SBC Embedded System



| Model Name | ECN-380-QM87 | ECN-360A-ULT3 | ECW-281B-BT | |
|--------------------|--|--|--|--|
| Chassis | Color | Silver | Black | |
| | Dimensions (WxDxH) (mm) | 265 x 134 x 56.7 | 255 x 130 x 75 | 229 x 132 x 64 |
| | System Fan | Fanless | Fanless | Fanless |
| | Chassis Construction | Aluminum alloy with heavy duty metal | SECC | Aluminum alloy with heavy duty metal |
| Motherboard | Motherboard Model | NANO-QM871-i1 | NANO-ULT3 | WAFER-BT-i1 |
| | SBC Size (mm) | EPIC (165 x 115) | EPIC, 165 x 115 | 3.5", 146 x 102 |
| | CPU | Intel® Core™ i5-4400E 2.7 GHz Intel® Celeron® 2000E 2.2 GHz | Intel® Core™ i5-6300U Intel® Celeron® 3855U | Intel® Celeron® J1900 quad-core 2.42GHz |
| | Chipset | Intel® QM87 | N/A | SoC |
| System Memory | One 204-pin DDR3 4GB SO-DIMM pre-installed (system max: 8GB) | 2 x 260-pin 2133/1866 MHz dual-channel DDR4 SO-DIMMs support up to 32GB Pre-install 4GB DDR4 | 1 x 204-pin 2 GB 1066/1333 MHz single-channel DDR3L SO-DIMM (system max. 4 GB) | |
| IPMI | iRIS Solution | 1 x iRIS-1010 | N/A | 1 x iRIS-1010-R10 |
| Storage | Hard Drive | 2 x 2.5" SATA 6Gb/s HDD/SSD bay | 2 x 2.5" SATA HDD bay (No RAID support) | 1 x 2.5" SATA 3Gb/s HDD bay |
| | CF Card/CFast | N/A | N/A | N/A |
| I/O Interfaces | USB 3.0 | 2 | 4 | 1 |
| | USB 2.0 | 4 | N/A | 3 |
| | Ethernet | 2 x RJ-45 LAN1: Intel® I217LM PHY with Intel® AMT 9.0 support LAN2: Intel® I210-AT PCIe controller | LAN1: Intel® I219-LM LAN2: Intel® I211-AT | LAN 1: PCIe GbE by Intel® I210 controller LAN 2: PCIe GbE by Intel® I211 controller |
| | COM Port | 2 x RS-232 | 1 x RS-232/422/485 2 x RS-232 | 3 x RS-232 1 x RS-422/485 |
| | Digital I/O | N/A | 8-bit digital I/O | 8-bit digital I/O (4-bit input, 4-bit output) |
| | Display | 2 x HDMI, 1 x VGA | 2 x HDMI | 1 x VGA |
| | Resolution | VGA: Up to 1920x1200@60Hz HDMI: Up to 2500x1600@60Hz | HDMI: up to 4096x2160@24Hz | VGA: 2560x1600@60Hz |
| | Audio | 1 x Line-out, 1 x Mic-in | 1 x Line-out | 1 x Line out |
| Wireless | 1 x 802.11b/g/n | 2 x 802.11b/g/n (optional) | 1 x 802.11b/g/n | |
| Expansions | PCle Mini | 1 x Full-size PCIe Mini (supports mSATA, SATA 6Gb/s signal only) 1 x Half-size PCIe Mini (only for iRIS-1010) | 1 x Full-size PCIe Mini card slot (with SIM holder & mSATA support) 1 x Half-size PCIe Mini card slot | 1 x Full-size PCIe Mini card slot (supports mSATA) 1 x Half-size PCIe Mini card (only for iRIS) |
| Power | Power Input | DC Jack: 12 V DC 3-pin terminal: 9 V~36 V DC | DC 12V (Optional 9~36V) Power 1: DC jack Power 2: Terminal block(for optional 9~36V only) | DC jack: 12 V DC 3-pin terminal: 9 V~36 V DC |
| | Power Consumption | 12 V@4.6 A (Intel® mobile Core™ i5-4400E CPU with 4GB 1333MHz DDR3 memory) | 12 V@2.4 A (Intel® i5-6300U with 4GB DDR4 memory) | 12V@1.45A (Intel® Celeron® J1900 CPU and one 8 GB 1333 MHz DDR3 memory) |
| Reliability | Mounting | Wall mount, VESA 100 | Wall mount, VESA 100 | Wall mount, VESA 100 |
| | Operating Temperature | -20°C ~60°C with air flow (SSD), 10% ~ 95%, non-condensing | -20°C~60°C with air flow (SSD), 5% ~ 95%, non-condensing | -20°C~60°C with air flow (SSD), 10% ~ 95%, non-condensing |
| | Operating Shock | Half-sine wave shock 5G, 11ms, 3 shocks per axis | | Half sine wave 5G, 11ms 3-axis (non-operational) |
| | Operating Vibration | MIL-STD-810F 514.5C-2 (with SSD) | MIL-STD-810F 514.5C-2 (with SSD) | MIL-STD-810F 514.5C-1 (HDD) |
| Weight (Net/Gross) | 2.4 kg/4.2 kg | 2.2 kg/3 kg | 2.1 kg / 3.9 kg | |

Embedded Chassis Series

New



| Model Name | EBC-3300 | EBC-3220 | EBC-3100 | |
|-----------------------|--------------------------------|---|---|---|
| Platform | Case only | Case only | Case only | |
| Chassis | Color | Black | Black | |
| | Dimensions (WxDxH) (mm) | 190 x 190 x 43 | 190 x 180 x 55 | 260 x 250 x 156 |
| | System Fan | -- | 1 x 4 cm | 1 x 8 cm |
| | Chassis Construction | Heavy duty metal | Heavy duty metal | Heavy duty metal with plastic front panel |
| Motherboard | Motherboard Model | EBC-3300-ULT3-R10: tKINO-ULT3 EBC-3300-AL-R10 :tKINO-AL EBC-3300-BW-R10: tKINO-BW | tKINO-BW KINO-DQM170 KINO-DH810 KINO-DBT eKINO-BT KINO-DA750-i2 KINO-KBN/SE-i2 KINO-DQM871-i1 KINO-DH610 KINO-QM770 KINO-QM670 KINO-QM57A KINO-HM551 KINO-CV/D2550/N26001 KINO-PV-D4252/D5252 | KINO-AQ170 KINO-ABT KINO-AA750-i2 KINO-AQ870 KINO-AQ670 KINO-AH611 KINO-AH612 |
| | SBC Size (mm) | Mini-ITX (170 x 170) | Mini-ITX (170 x 170) | Mini-ITX (170 x 170) |
| | Hard Drive | 1 x 2.5" SATA HDD drive bay | 1 x 2.5" SATA HDD drive bay | 1 x 3.5" SATA HDD space |
| Storage | CF Card/CFast | N/A | N/A | Refer to SBC |
| | SD Card | Refer to SBC | Refer to SBC | Refer to SBC |
| | PS2 (KB/MS) | N/A | N/A | Refer to SBC |
| I/O Interfaces | USB 3.0 | Refer to SBC | Refer to SBC | Refer to SBC |
| | USB 2.0 | Refer to SBC | Refer to SBC | Refer to SBC |
| | Ethernet | 2 | 2 | 2 |
| | COM Port | Refer to SBC | Refer to SBC | Refer to SBC |
| | LPT | Refer to SBC | Refer to SBC | Refer to SBC |
| | Display | Refer to SBC | Refer to SBC | Refer to SBC |
| | Resolution | Refer to SBC | Refer to SBC | Refer to SBC |
| | Audio | Refer to SBC | Refer to SBC | Refer to SBC |
| Expansions | Wireless | Refer to SBC | Refer to SBC | Refer to SBC |
| | PCI | N/A | N/A | N/A |
| | PCIe | N/A | N/A | 1 x Full-height expansion slot |
| | PCIe Mini | Refer to SBC | Refer to SBC | Refer to SBC |
| Others | 1 x E-Window | N/A | N/A | |
| Power | Power Input | 12V DC | 12V DC | 90~264V AC |
| | Power Supply | 12V DC | 12V DC | ACE-A618A 180W ACE-A627A 270W |
| Reliability | Mounting | VESA 100, wall mount | VESA 100, wall mount | Desktop, wall mount |
| | Operating Temperature | -10°C~50°C | -10°C~50°C | 0°C ~ 50°C |
| | Operating Shock | Half-sine wave 3G, 11 | | |
| | Operating Vibration | MIL-STD-81 | | |
| | Weight (Net/Gross) | 1 kg/2 kg | 1 kg/2 kg | 2.5 kg/3.9 kg |

* Optional items

** Systems with hard drive meet MIL-STD-810F 514.5C-1 specifications. SSD/CF systems meet MIL-STD-810F 514.5C-1 specifications.

Embedded Chassis Series



| Model Name | EBC-3000 | EBC-2200 | EBC-2100 | EBC-1100 |
|-----------------------|--------------------------------|---|--|--|
| Platform | Case only | Case only | Case only | Case only |
| Chassis | Color | Black | Black | Cool gray |
| | Dimensions (WxDxH) (mm) | 280 x 230 x 88 | 215 x 150 x 55 | 262 x 134 x 56 |
| | System Fan | 1 x 6 cm | 1 x 4 cm | 1 x 4 cm* |
| | Chassis Construction | Heavy duty metal with plastic front panel | Aluminum alloy with heavy duty metal | |
| Motherboard | Motherboard Model | KINO-AQ170 KINO-ABT KINO-AA750-i2 KINO-AQ870 KINO-AQ670 KINO-AH611 KINO-AH612 | NANO-BT-11 NANO-BTW2 NANO-QM871 | NANO-LX |
| | SBC Size (mm) | Mini-ITX (170 x 170) | EPIC (165 x 115) | EPIC (165 x 115) |
| | Hard Drive | 1 x 3.5" SATA HDD space | 1 x 2.5" SATA 6Gb/s HDD/SSD drive bay | 1 x 2.5" SATA HDD space |
| Storage | CF Card/CFast | Refer to SBC | N/A | 1 |
| | SD Card | Refer to SBC | N/A | N/A |
| | PS2 (KB/MS) | Refer to SBC | Refer to SBC | 1 |
| I/O Interfaces | USB 3.0 | Refer to SBC | Refer to SBC | N/A |
| | USB 2.0 | Refer to SBC | Refer to SBC | 4 |
| | Ethernet | 2 | 2 | 1 |
| | COM Port | Refer to SBC | Refer to SBC | 1+2 RS-232* |
| | LPT | Refer to SBC | N/A | *1 |
| | Display | Refer to SBC | Refer to SBC | 1 x VGA |
| | Resolution | Refer to SBC | Refer to SBC | N/A |
| | Audio | Refer to SBC | 1 x Line out, 1 x Mic-in | 3 x Audio jack* |
| | Wireless | Refer to SBC | 1 x 802.11b/g/n | N/A |
| | Wireless | Refer to SBC | 1 x 802.11b/g/n | N/A |
| Expansions | PCI | N/A | N/A | N/A |
| | PCIe | N/A | N/A | N/A |
| | PCIe Mini | Refer to SBC | 1 x Full-size PCIe Mini card slot | N/A |
| | Others | N/A | N/A | 1 x PCI-104 |
| Power | Power Input | 90~264V AC | 12V DC | 12V DC in |
| | Power Supply | ACE-A618A 180W ACE-A627A 270W | 12V, 5A | 12 V DC in, AT mode only, with 60W power adapter |
| Reliability | Mounting | Desktop, wall mount | Wall mount, VESA 100 | Desktop, wall mount |
| | Operating Temperature | 0°C ~ 50°C | -20°C ~ 60°C | 0°C ~ 50°C |
| | Operating Shock | Half-sine wave 3G, 11ms 3 shocks per axis | Half-sine wave shock 5G, 11ms, 3 shocks per axis | Half-sine wave 3G, 11ms 3 shocks per axis |
| | Operating Vibration | MIL-STD-810F 514.5C-1 | | MIL-STD-810F 514.5C-1 (with SSD) |
| | Weight (Net/Gross) | 2.5 kg/3.9 kg | 1.1kg/2kg | 1 kg/3 kg |

* Optional items

** Systems with hard drive meet MIL-STD-810F 514.5C-1 specifications. SSD/CF systems meet MIL-STD-810F 514.5C-1 specifications.

Cervoz develops, produces and markets storage and memory products for industrial computing. Everything we do from design, product management and manufacturing to quality control, sales and service is dedicated to fulfilling the special characteristics of diversified and critical industrial application.

Cervoz have comprehensive product line from standard temperature to wide temperature which can sustain application including Embedding Computing, Factory Automation, Transportatoin, Information & Entertainment, Server & Cloud Computing as well as many others.

Industrial SSD



2.5" SATA SSD
2.5" PATA SSD

Industrial Memory Card



CompactFlash
CFast

Industrial Embedded Module



mSATA
Half Size mSATA
Half Slim
M.2 2242 / 2260 / 2280
SATA Disk 7pin
PATA Disk 40/44pin

Industrial RAM Module



DDR4 DIMM / SO-DIMM
DDR4 RDIMM / ECC DIMM
DDR3 DIMM / SO-DIMM
DDR3 RDIMM / ECC DIMM
DDR2 DIMM / SO-DIMM
DDR1 DIMM / SO-DIMM

Mini PCIe Expansion Card



WIFI Solution
Ethernet Solution
Serial Solution
USB Solution
SATA Solution
Display Solution

Storage Enclosure



Storage Enclosure
RAID Storage Enclosure

...by people
who care!



ICP Deutschland GmbH

Mahdenstr. 3

D-72768 Reutlingen

Tel: +49 (0) 7121 14323-0

info@icp-deutschland.de

www.icp-deutschland.de