

Table of Contents

▶ IEI Group	1~2
▶ A Meticulous Commitment to Product Quality	3~5
▶ Waterproof Certification Laboratory	6
▶ Complete Line of Innovative Solutions	7~8
▶ IEI Intelligent System Management Module	9~10
▶ QTS Gateway for IoT Cloud Solution	11~15
▶ IEI One Key Recovery Solution	16
▶ IPMI Remote Management in IEI Solution	17~18

1 ODM Reference

▶ Telehealth / Telemedicine Solution (ODM & OEM)	1-1~1-2
• AfoBot	1-3~1-4
▶ Smart Fitness Solution	1-5
• FIT2-W10A-RK	
• FIT2-W18A-RK	1-6
• FIT2-W21A-RK	

2 IEIMobile Solution

▶ Automatic Identification and Data Capture (AIDC) Technology	2-1~2-2
▶ Our Dedicated Product Lines	2-3
• ICEROCK 3 Ultra Tough Assistant	2-4~2-5
• ICECARE-10W Mobile Sales Assistant	2-6~2-7
• MODAT-532 Mobile Data Collector	2-8~2-9
• MODAT-550A Mobile Data Collector	2-10~2-11
• IMATELLIGENT Multipurpose IMATELLIGENT Alarm System	2-12~2-13

3 Automation Panel Solution

Light Industrial Panel Solution

▶ Light Industrial Panel PC Product Line	3-1	
▶ AFOLUX GEN III Interactive Panel PC	3-2~3-8	
AFOLUX 3 Panel PC	AFL3-W07A-BT	3-9~3-11
	AFL3-08A-BT	
	AFL3-W10A-BT	
	AFL3-12A-BT	3-12~3-15
	AFL3-12C-ULT3	
	AFL3-W15A-BT	
	AFL3-W15B-H81	3-16~3-19
	AFL3-W15C-ULT3	
	AFL3-W19C-ULT3	3-20~3-22
	AFL3-W19A-AL	
AFL3-W22C-ULT3	3-23~3-24	
▶ AFOLUX GEN II Panel PC	3-25~3-28	
▶ AFOLUX GEN II Selection Guide	3-29~3-30	
AFOLUX 2 Panel PC	AFL2-08A-N26	3-31~3-32
	AFL2-10A-N28	3-33~3-34
	AFL2-12A-HM65	3-35~3-36
	AFL2-17A-H61	3-37~3-49
	AFL2-W21A-H61	3-40~42
▶ AFOLUX Selection Guide	3-43~3-44	
AFOLUX Panel PC	AFL-07A-LX	3-45~3-47
	AFL-W07A-N26	
	AFL-08AH-LX	3-48~3-50
	AFL-08A-N26	
	AFL-12A-N26	3-51~3-52
	AFL-15i-HM55	3-53~3-54
	AFL-17i-HM55	3-55~3-56
	AFL-19i-HM55	3-57~3-58

Heavy Industrial Panel PC Solution

▶ Heavy Industrial Panel PC Product Line	3-59		
▶ PPC-F Series Introduction	3-60		
▶ PPC-F Series Selection Guide	3-61~63		
General Purpose Panel PC	PPC-F H81 Series	PPC-F15A-H81	
		PPC-F17A-H81	
		PPC-F22A-H81	3-64~3-67
		PPC-F24A-H81	
General Purpose Panel PC	PPC-F Bay Trail Fanless Series	PPC-F06B-BT	
		PPC-F08B-BT	3-68~3-70
		PPC-F10B-BT	
		PPC-F12B-BT	
		PPC-F15B-BT	3-71~3-74
		PPC-F17B-BT	
PPC-F19B-BT			
▶ PPC Series Introduction	3-75		
▶ PPC Series Selection Guide	3-76		
General Purpose Panel PC	PPC Series	PPC-3708A-N26	3-77~3-78
		PPC-3712A-N26	3-79~3-80
		PPC-5150A-H61	3-81~3-82
		PPC-5170A-H61	3-83~3-84
		PPC-5190A-H61	3-85~3-86
▶ Vertical Market PPC Selection Guide	3-87~3-88		
▶ Marine Series Introduction	3-89~3-90		
Vertical Market Panel PC	Marine System	S19A-QM87	3-91~3-92
		S24A-QM87	
		SBOX-100-QM87	3-93~3-95
▶ Marine Monitor Series Introduction	3-96~3-98		
Vertical Market Panel PC	Marine Monitor Series	S19M	3-99~3-100
		S24M	
Vertical Market Panel PC	UPC Series	UPC-F12C-ULT3	3-101~3-102
		UPC-V315-QM77	3-103~3-107
		UPC-V312-D525	3-108~3-109
Vertical Market Panel PC	INOX Series	INOX-F15C-ULT3	3-110~3-111



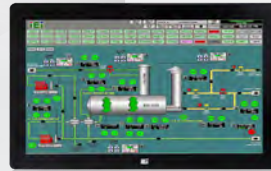
AFOLUX PPC

Automation Panel Solution

IEIMobile Solution

Telehealth /
Telemedicine
Solution
(ODM & OEM)

AfoBot



Healthcare Solution



Optional
Peripherals

ODM
Reference

Smart Fitness
Solution



4 Healthcare Solution

▶ Smart Healthcare Strategies of IEI Group	4-1-4-2
▶ All-in-one Medical Grade Panel PC	4-3
▶ Selection Guide	4-4-4-5

Point-of-Care Terminal	POC-17C-ULT3	4-6-4-8
	POC-17i-HM55	4-9-4-10
	POC-19i-HM55	4-11-4-18
	POC-W22A-H81	4-19-4-20
Mobile Point-of-Care Terminal	POCm-W22C-ULT3	4-21-4-24
	POCm-W24C-ULT3	
Bedside Infotainment Terminal	BIS-W19C-ULT4	4-25-4-28
	IOVU-10F-AD	4-29-4-30
Medical Box PC	HTB-100-HM170	4-31-4-33
Medical Barcode Reader	HTDB-100FM	4-34-4-35

BriteMED Medical Solution Introduction

▶ Solution Partner for Healthcare Industry	4-36	
BriteMED Medical Solution	BriteMED® MMS-21C	4-37-4-38
	BriteMED® MMS-21CA	4-39-4-40
	BriteMED® MMS-21CT A	4-41-4-42
	MBM Series	4-43
	Medical Cart	4-44

RISC Based Panel PC Solution

▶ RISC Based Panel PC Solution	3-112-3-113	
RISC Based Panel PC	RISC Based Panel PC Selection Guide	3-114-3-115
	IOBA-07F	3-116-3-117
	IOVU-07F-AD	3-118-3-119
	IOVU-10F-AD	3-120-3-121
	IOBA-10F-AD	3-122-3-123
	IOVU-12F-AD	
	IOVU-15F-AD	3-124-3-126
	IOVU-17F-AD	

Industrial Monitor Solution

▶ Industrial Monitor Introduction	3-127-3-129		
Heavy Industrial Monitor	DM-F65A		
	DM-F08A		
	DM-F12A		
	DM-F15A		
	DM-FW15A		
	DM-F17A	3-130-3-136	
	DM-FW19A		
	DM-F19A		
	DM-F22A		
	DM-F24A		
	LCD-KIT-F Series	LCD-KIT-F12A	
		LCD-KIT-F15A	
		LCD-KIT-F17A	3-137-3-143
LCD-KIT-F19A			
Marine Monitor	S19M	3-144-3-145	
	S24M		
▶ Display Workstation Solutions	3-146		
	WS-855GS	3-147-3-148	

5 Optional Peripherals

• Faster and New SATA Flash Storage	5-1
• Intelligent DC UPS Module	
AUPS-A10 / AUPS-A20	5-2-5-5
AUPS-B10 / AUPS-B20	
IDD-930160-KIT	5-6
• IEI Quick Mounting Technology	5-7-5-11