

# Table of Contents

• IEI Group	1~2	• Intel® Apollo Lake Platform	27~28
• Best-in-Class Design and Service	3~5	• IEI Extreme Environment Series New Wide Temperature Products	29~30
• Total Platform Solutions	6	• IEI Intelligent System Management Module	31~32
• Mustang-200 Accelerate to the Future	7~16	• IEI One Key Recovery Solution	33
• QTS Gateway for IoT Cloud Solution	17~21	• OS Support List	34
• IPMI Remote Management in IEI Solution	22~23	• Intel® CPU and Chipset Matrix Table	35~42
• IEI Provides 15-year Long-Term Supply	24		
• IEI 8th Generation Intel® Solution	25~26		

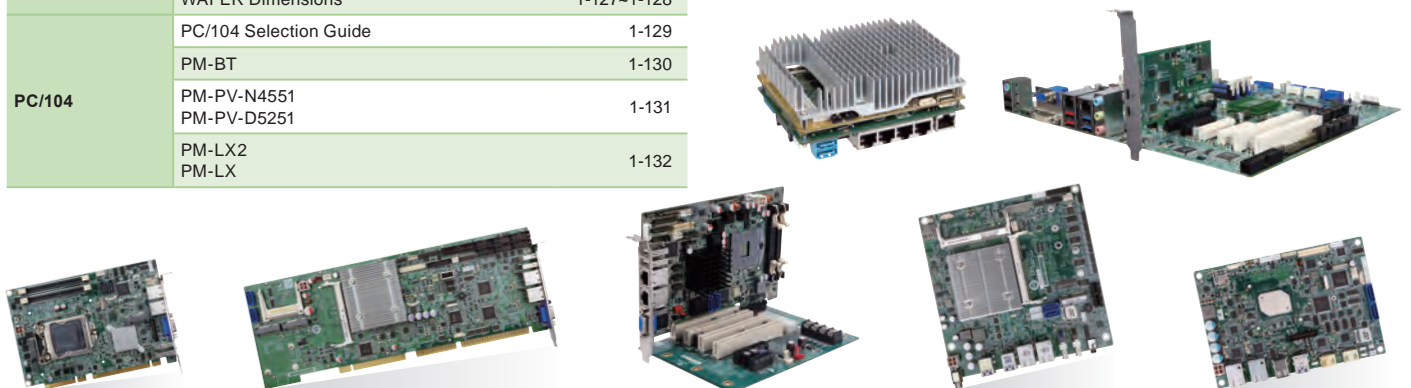


## 1 Industrial Computing Solutions

Single Board Computer		Industrial Motherboard		
PICMG 1.3	PICMG 1.3 Introduction	1-1	Industrial Motherboard Selection Guide	1-48~1-51
	PICMG 1.3 Selection Guide	1-2~1-4	IMBA-C604EP	1-52
	HPCIE-C236	1-5	IMBA-Q370	1-53
	HPCIE-Q170	1-6	IMBA-Q170-TB3	1-54
	PICMG 1.3 Passive Backplane for Half-Size CPU Card	1-7	IMBA-H110	1-55
	SPCIE-C236	1-8	IMBA-C2360-i2	1-56
	SPCIE-C2260-i2	1-9	IMBA-Q170-i2	1-57
	SPCIE-C2160		IMBA-BDE	1-58
	PICMG 1.3 Backplane	1-10~1-11	IMBA-H810	1-59
	PCIE-Q170	1-12	IMBA-C2260-i2-R11	1-60
	PCIE-H810	1-13	IMBA-Q870-i2	1-61
	PCIE-Q870-i2	1-14	IMBA-Q770	1-62
	PCIE-Q670-R20		IMBA-C2160	
	PCIE-H610	1-15	IMBA-H610	1-63
	PCIE-Q57A		IMBA-Q670-R30	
PICMG 1.3 Passive Backplane	1-16~1-20	IMB-H110	1-64	
PICMG 1.0	Full-size PICMG 1.0 Selection Guide	1-21	IMB-Q870-i2	1-65
	WSB-BT	1-22	IMB-H810-i2-R11	1-66
	WSB-H810	1-23	IMB-Q770	
	WSB-H610-R11	1-24	IMB-Q670-R30	1-67
	WSB-PV-D4251/D5251		IMB-H610A	
	PCI/PX Backplane	1-25~1-30	ATX Motherboard Dimensions	1-68~1-70
Half-size PICOe Series	Half-size PICOe, ISA Selection Guide	1-31~1-32	Micro-ATX Motherboard Dimensions	1-71
	PICOe CPU Card	1-33	Mini-ITX Selection Guide	1-72~1-76
	PICOe-B650	1-34	KINO-DH110	1-77
	PICOe-HM650	1-35	KINO-DAL	1-78
	PICOe-PV-D4251/N4551/D5251		tKINO-AL	1-79
PCI/PICOe Backplane	1-36~1-37	gKINO-DMF	1-80	
Half-size PCISA/ISA Series	PCISA-BT	1-38	tKINO-ULT3	1-81
	PCISA-PV-D5251	1-39	KINO-DCM236	1-82
	IP/IPX Series Backplane	1-40~1-43	KINO-DQM170	1-83
	IOWA-LX	1-44	KINO-AQ170	1-84
	BP Series Backplane	1-45~1-46	tKINO-BW	1-85
	AC-KIT-892HD	1-47	KINO-DBT	1-86
	AC-KIT08R		KINO-SE-i2	1-87
IO-KIT-001-R20	KINO-KBN-i2			

Mini-ITX	KINO-DH810	1-88	
	eKINO-BT	1-89	
	KINO-ABT-i2 KINO-AQ870	1-90	
	KINO-DQM871-i1 KINO-QM770	1-91	
	KINO-DH610 KINO-AH611	1-92	
	KINO-AH612 KINO-CV-D25501/N26001	1-93	
	KINO-QM670-R20 KINO-QM57A	1-94	
	KINO-HM551 KINO-PV-D4252/D5252	1-95	
	PCIe Riser Card	1-96	
	Mini-ITX Dimensions	1-96~1-100	
	<b>Embedded Boards</b>		
	5.25" SBC	IEI Embedded Boards	1-101
NOVA-PV-D5251		1-102	
EPIC SBC	EPIC NANO Selection Guide	1-103~1-105	
	NANO-AL NANO-ALW2	1-106	
	NANO-ULT3	1-107	
	NANO-BTW2 NANO-BT-i1	1-108	
	NANO-SE-i1/KBN-i1 NANO-QM871-i1	1-109	
	NANO-QM770 NANO-CV-D25502/N26002	1-110	
	NANO-CV-D25501/N26001 NANO-HM651	1-111	
	NANO-HM650 NANO-PV-D5251	1-112	
	NANO-PV-D4252/N4552/D5252 NANO-LX	1-113	
	EPIC NANO Dimensions	1-114~1-115	
	3.5" WAFER	3.5" WAFER Selection Guide	1-116~1-117
		WAFER-AL	1-118
WAFER-ULT3 WAFER-ULT4		1-119	
WAFER-BW		1-120	
WAFER-ULT2-i1 WAFER-ULT-i1		1-121	
WAFER-BT-E38001W2		1-122	
WAFER-BT-i1		1-123	
WAFER-KBN-i1 WAFER-CV-D25501/N26001		1-124	
WAFER-CV-D25502/N26002 WAFER-PV-D5252/D4252/N4552		1-125	
WAFER-LX WAFER-LX2		1-126	
WAFER Dimensions		1-127~1-128	
PC/104		PC/104 Selection Guide	1-129
	PM-BT	1-130	
	PM-PV-N4551 PM-PV-D5251	1-131	
	PM-LX2 PM-LX	1-132	

Pico-ITX	Pico-ITX Selection Guide	1-133	
	HYPER-BW	1-134	
	HYPER-BT	1-135	
	HYPER-KBN	1-136	
	HYPER Dimensions	1-137	
<b>Computer on Modules</b>			
Computer on Modules	IEI Computer on Modules	1-138	
	Computer on Module Selection Guide	1-139~1-140	
COM Express	IEI COM Express Series	1-141~1-143	
	ICE-BT-T10 ICE-BT-T10W2	1-144	
	ICE-BDE-T7	1-145	
	ICE-ULT3	1-146	
	ICE-BT-T6	1-147	
	ICE-QM871 ICE-QM770	1-148	
	ICE-DB-T10	1-149	
	ICE-DB-T7-i2	1-150	
	ICE-DB-T6R ICE-DB-T6	1-151	
	iQ7	Q7 Introduction	1-152
		iQ7-AL iQ7-ALW2	1-153
		iQ7-BTW2/iQ7-BT iQ7-DB-MATX	1-154
<b>Peripherals</b>			
Peripherals	MPCIE-UART-KIT01-R10 MPCIE-UART-KIT02-R10	1-155	
	MPCIE-DLAN-R10 MPCIE-LAN-R10 MPCIE-3G-R20	1-156	
	Wireless LAN Module WMPCIE-V02-R10 WIFI-RT3593-DB-R10	1-157	
	IGCME-1300-R11 MPCIE-USB3	1-158	
	IEI Trusted Platform Module (TPM) IPCIE-4POE	1-159	
	SATA to CFast™ Converter Board SATA to CF Type II Converter Board SATA to IDE/CF Type II Converter Board IDE/CF Type II Converter Board	1-160	
	IEI iDP Introduction DP-DP-R10 DP-HDMI-R10 DP-LVDS-R10 DP-VGA-R10 DP-DVI-R10	1-161~1-162	
	LVDS-DVI LVDS-VGA-R10 LVDS24-01	1-163	
	PM-1004/1028-8	1-164	

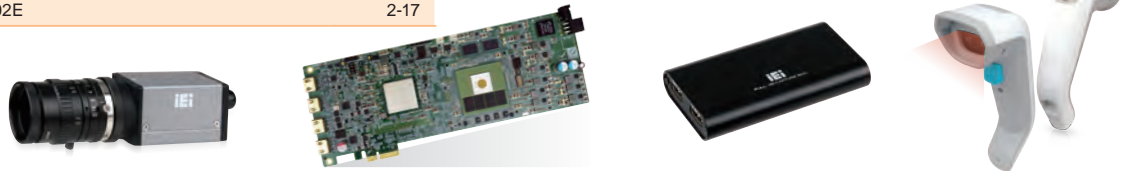


# 2

# Video Capture Solutions

Video Capture Solutions		
Video Capture Solutions Introduction		2-1
<b>H.265/H.264 Hardware Compression Video Capture Product</b>	Hardware Compression Video Capture Solution	2-2~2-3
	UHDC-314E	2-4
	H.264 Hardware Compression Video Capture Product Selection Guide (1080p30 Full HD)	2-5
	HDC-301MS	2-6
	HDC-701EL Video Capture Card Solution	2-7~2-8
	HDC-301EL	2-9
	Portable Video Capture Box's Solution	2-10
	HDB-301L	2-11
<b>H.264 Hardware Compression Video Capture Product</b>	H.264 Hardware Compression Video Capture Product Selection Guide (1080p60 Full HD)	2-12
	HDC-304E	2-13
	HDC-302E	2-14
	HDC-301E	2-15
	Long Distance High-Definition Compression Solution	2-16
	HDC-502E	2-17

<b>Uncompressed Video Capture Product</b>	Uncompressed 4K/HD/SD Video Capture Solution	2-18
	Uncompressed Video Capture Product Selection Guide	2-19
	HDB-301R USB 3.0 Capture Box	2-20~2-22
	HSRC-301E	2-23
<b>SD Software Compression Capture Card</b>	Standard-Definition Software Compression Capture Card Selection Guide	2-24
	IVCME-C604	2-25
	IVC-200G-RS PM-1056-4P-RS-R21	2-26
Machine Vision Solutions		
Machine Vision Solutions Introduction		2-27~2-28
<b>Industrial Camera &amp; Barcode Reader</b>	HSC-13M3-O	2-29
	HSC-13M4-E	2-30
	HTDB-100F/FM	2-31~2-32
	ITDB-100 Series	2-33~2-37



# 3

# Embedded System Platform Solutions

Embedded System Platform Solutions		
Embedded System Platform Solutions Introduction		3-1
<b>Transportation System</b>	Transportation Solution	3-2~3-8
	E-Window Tool Kit	3-9
	Transportation System Selection Guide	3-10~3-12
	IKARPC-05A	3-13~3-14
	IKARPC-07A	3-15~3-16
	IKARPC-W10A	3-17~3-18
	IVS-300	3-19~3-20
	IVS-200-ULT2	3-21~3-22
	IVS-110-AL	3-23~3-24
	IVS-100-BT	3-25~3-26
	ITCS-100-H81	3-27~3-28
	TRS-100	3-29~3-30
	IRS-100-ULT3	3-31~3-32
	SBOX-100-QM87	3-33~3-35
	<b>TANK Series</b>	Industrial Automation Solution
Industrial Automation System Selection Guide		3-38~3-41
TANK-871-Q170		3-42~3-43
TANK-870-Q170		3-44~3-46
TANK-870e-H110		3-47~3-48
TANK-860-HM86		3-49~3-51
TANK-801-BT		3-52~3-53
TANK-800-D525		3-54~3-56
TANK-820-H61		
TANK-760-HM86		3-57~3-59
TANK-700-QM67		3-60~3-62
TANK-720-Q67		
TANK-620		3-63~3-64
TANK-610-BW		3-65~3-66

<b>TANK Series</b>	TANK-600-D2550 TANK-600-N2600	3-67~3-68
	TANK-101B-D525 TANK-101B-N455	3-69
	TANK-6000-C226	3-70
	MVS-100-Q170	3-71~3-72
<b>DIN-Rail Embedded System</b>	DIN-Rail Embedded System Selection Guide	3-73
	DRPC-130-AL	3-74~3-75
	DRPC-100-CV DRPC-120-BT	3-76~3-79
<b>Compact Size Embedded System</b>	Compact Size Embedded System Selection Guide	3-80
	uIBX-250-BW	3-81~3-82
	uIBX-230-BT	3-83
	uIBX-210-CV-N2600	3-84
<b>Digital Signage</b>	Digital Signage Solution	3-85
	IDS-300-BW	3-86
<b>Medical Embedded System</b>	HTB-100-HM170	3-87~3-88

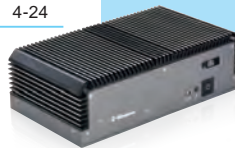


# 4

# Industrial Computer Chassis

Industrial Computer Chassis		
Industrial Computer Chassis Introduction 4-1		
SBC Embedded System	SBC Embedded System Selection Guide 4-2~4-3	4-2~4-3
	ECN-380-QM87 4-4~4-5	4-4~4-5
	ECN-360A-ULT3 4-6~4-7	4-6~4-7
	ECN-360A-HM65 ECN-360A-D2550 4-8~4-9	4-8~4-9
	ECW-281BWD-ULT3 ECW-281BWD-ULT4 4-10	4-10
	ECW-281B-BT 4-11	4-11
	ECW-281B-D2550 4-12	4-12
	ECW-281B/B2 Series 4-13	4-13
	Embedded Chassis Series	Embedded Chassis Series Selection Guide 4-14~4-15
EBC-3300 4-16~4-17		4-16~4-17
EBC-3220 4-18		4-18
EBC-3200 4-19		4-19
EBC-3100 4-20		4-20
EBC-3000 4-21		4-21
EBC-2200 4-22		4-22
EBC-2100 4-23		4-23
EBC-1100 4-24		4-24

Industrial Computer Chassis	Chassis Selection Guide 4-25	4-25
	RACK-1150G/1150G-PE 4-26	4-26
	RACK-220G 4-27	4-27
	RACK-2100G 4-28	4-28
	RACK-305G 4-29	4-29
	RACK-360G 4-30	4-30
	RACK-3000G 4-31	4-31
	RACK-500G 4-32	4-32
	ECA-300 4-33	4-33
	ECA-200 4-34	4-34
	ECA-100 4-35	4-35
	PAC-1000G 4-36	4-36
	PAC-106G 4-37	4-37
	PAC-1700G 4-38	4-38
	PAC-125G 4-39	4-39
	PAC-53GH 4-40	4-40
	PR-1300G 4-41	4-41
	PAC-42GH 4-42	4-42
	PR-1500G 4-43	4-43
	PAC-400G 4-44	4-44
	PAC-700G 4-45	4-45



# 5

# Power Supply/Peripherals

Power Supply			
Power Supply Introduction 5-1~5-2			
Open Frame	Open Frame Selection Guide 5-3	5-3	
	ACE-713APM 5-3	5-3	
	ACE-890A ACE-870A 5-4	5-4	
	ACE-706AM ACE-890C 5-5	5-5	
	1U/2U Type	1U/2U Type Selection Guide 5-6~5-7	5-6~5-7
ACE-A630B ACE-A627A 5-8		5-8	
ACE-A225A 5-9		5-9	
ACE-A622A/B ACE-A618A/B 5-10		5-10	
ACE-A615A/B ACE-916AP 5-11		5-11	
ACE-716A/AP ACE-717CX 5-12		5-12	
ACE-4520C ACE-716C 5-13		5-13	
PS/2 Type		PS/2 Selection Guide 5-14	5-14
		ACE-A160A 5-15	5-15
		ACE-4840APM 5-16	5-16
	ACE-A140A 5-17	5-17	
	ACE-A140A-S 5-18	5-18	
	ACE-A130B 5-19	5-19	
	ACE-A130B-S 5-20	5-20	
	ACE-828A ACE-828M 5-21	5-21	
	ACE-932A ACE-935AL ACE-925A ACE-828C 5-22	5-22	
	Optional Power Supply Cables 5-23	5-23	
Redundant Type	Redundant Type Selection Guide 5-24	5-24	
	ACE-R4140AP ACE-R4130AP 5-24	5-24	

Adapter Type	Adapter Type Selection Guide 5-25	5-25
	FSP120-ABBN2 FSP096-AHAN2 FSP090-DIEBN2 5-26	5-26
	FSP065-REBN2 FSP060-DIBAN2 63040-010060-020 FSP036-RBBN2 5-27	5-27
	How to Configure the IDD & PM_P Series 5-28~5-29	5-28~5-29
	IDDV-6304140A 5-30~5-31	5-30~5-31
Converter Module	IDD-9364120A 5-32	5-32
	IDD-241100 IDD-936160 5-33	5-33
	PM-P006UPS 5-34~5-35	5-34~5-35
	IDD-930160-KIT 5-36	5-36
	IDD-936260A 5-37	5-37
	IDD-12250A 5-38	5-38

Peripherals		
Peripherals	CPU Cooler 5-39~5-40	5-39~5-40
	Industrial SATADOM Series 5-41~5-46	5-41~5-46
	Industrial SSD Series 5-42	5-42
	Industrial CFast & CF Card Series 5-43	5-43
	Industrial Mini PCIe DOM & mSATA Series 5-44	5-44
	M.2-SATA (NGFF) 5-45	5-45
	Ensuring the Best System Performance 5-46	5-46
	Lifespan Evaluation of Flash Products From Endurance to iSMART 5-47	5-47
	Drive Cage 5-48~5-49	5-48~5-49
	Cables and Connectors 5-50~5-53	5-50~5-53
	V-STAND 5-54	5-54
	Wall Mounting 5-54	5-54

